



Technology®
ABclonal

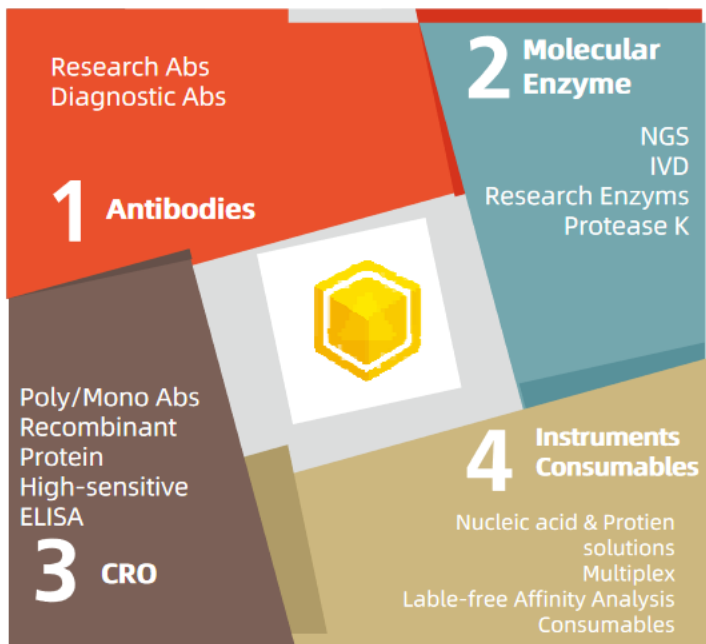
Introduction of ABclonal Molecular Enzyme Products




This document is for introduction only. Any unauthorized use of this document is strictly prohibited
ABTK20210201CNSV1.0

Business Overview

Reagents+CRO+Instruments+Consumables Integrated Procurement Supplier



A grayscale, semi-transparent image of a microscope is positioned diagonally across the left side of the slide. The lens and eyepiece are visible, creating a sense of scientific inquiry.

Composition of Molecular Enzyme Product lines

A large, bright yellow ring is partially visible on the right side of the slide. A black circle is overlaid on the ring, containing the white number '01'.

01

Compositions

For Research

- Extraction of Nucleic Acid
- Enzymes
- Endonuclease
- PCR
- qPCR
- RT
- Gene Clone

NGS Lib Prep

- Sample preparation
- Library Preparation
- Capture Kits
- Adapter Primer

For Diagnostic

- Taqman qPCR reagents
- Lyophilized qPCR reagents
- Directly qPCR reagents

Integrated Solutions

- Whole process solution

For Research

ABclonal has a complete scientific research molecular enzyme product line, which can be divided into 5 categories

Catagories	Products
PCR	Gloria Nova HS, PowerPol
qPCR	Universal series, Genius series
Reverse Transcription	ABscript III series, ABscript II series
Gene clone	2X MultiF Seamless Assembly Mix, Endonuclease, T4 ligase
Extraction of Nucleic Acid	Gel, Plasmid, DNA, RNA, Trizol

NGS

ABclonal has product both for illumina and MGI platform, applied in fields of research and development of diagnostic and clinical products.

Catagories

Products

DNA Lib

Rapid series (base on sonication) , FS series (based on fragmentase) ,
One-Step series (base on Tn5 Transposase) , Scale series (for Single
strand DNA Lib Prep)

RNA Lib

mRNA, Stranded mRNA, **fast RNA**, Whole RNA, small RNA
mRNA capture module, rRNA deletion module

Others

Capture reagents, Adaptors (MGI, illumina) , Extraction kits, DNA
Clean-up & Size-Selection magnetic-beads, Lib pooling

For Diagnostic

ABclonal provides different enzymes and kit for diagnostic, included taqman qPCR, RT-qPCR mix, and Lyophilized qPCR reagents.

分类

部分产品

Mix

taqman qPCR Mix, one step RT-qPCR Mix, Directly PCR

Core enzymes for IVD

Abs for Taq, Reverse Transcriptase, RNase inhibitor, heat-labile UDG, Proteinase K, Taq

Lyophilized reagent for IVD

High concentration core enzymes (glycerol-free), other lyophilized enzymes & service

Integrated Solutions

ABclonal has several solutions for different application

Fields	部分产品
Cancer	FFPE, ctDNA, MRD, Automation integrated solution for NGS
Research	ChIP-seq, Cut-Tag, Single-cell sequencing
Diagnostic	mNGS, Covid-19, Veterinary inspection



FFPE whole process solution
All kits involved could be supplied by
ABclonal



Products for Research



02

Product for Research-2021

Application	Cat. No.	Products	Launch time
PCR	RK20718/RK20719	★ PowerPol series PCR Mix	
	RK20714 /RK20717	★ Gloria Nova HS series Kit & Master Mix	
qPCR	RK21203	2X Universal SYBR Green Fast qPCR Mix	
	RK21204 / RK21205/ RK21206 /RK21207	Genious series SYBR Green Fast qPCR Mix	
RT	RK21400 / RK20400 / RK20402 / RK20403	ABScript II series RT Kits&Enzymes	
	RK20408 / RK20428 / RK20429	★ ABScript III series RT Kits&Enzymes	
Gene clone	RK21501 / RK21500	T4 DNA Ligase / T4 DNA Ligase (High Conc.)	
	RK20500	DNA Quick Ligation Kit	
Extraction of Nucleic Acid		Gel, Plasmid, DNA, RNA, Trizol	Sep-Oct

PowerPol series PCR Mix (RK20718 & RK20719)

The PowerPol series PCR Mix is a widely used basic reagent that locates the most common PCR usage scenarios. It can be used for mouse tail identification, genetic marker typing, plant transgene identification, colony PCR, gene cloning and other experiments. It is very trustworthy

Features:

- Universality:** Powerpol has a high amplification success rate for different species (rats, plants, microorganisms), different GC content (high GC, low GC), different extraction methods (rough extraction, fine extraction), and different sample source (gDNA, cDNA, plasmids).
- Multifunctional:** Powerpol's fidelity is 6.5 times than wild *Taq* enzyme, which can be used for gene detection and typing, and can also meet the needs of general vector construction
- Cost-effective**



PowerPol 2X PCR Mix
Catalog:RK20718



PowerPol 2X PCR Mix with Dye
Catalog:RK20719

Data: high amplification success rate

PowerPol 2X PCR Mix 23/24



Vendor A 17/24



Vendor B 19/24



Vendor C 16/24



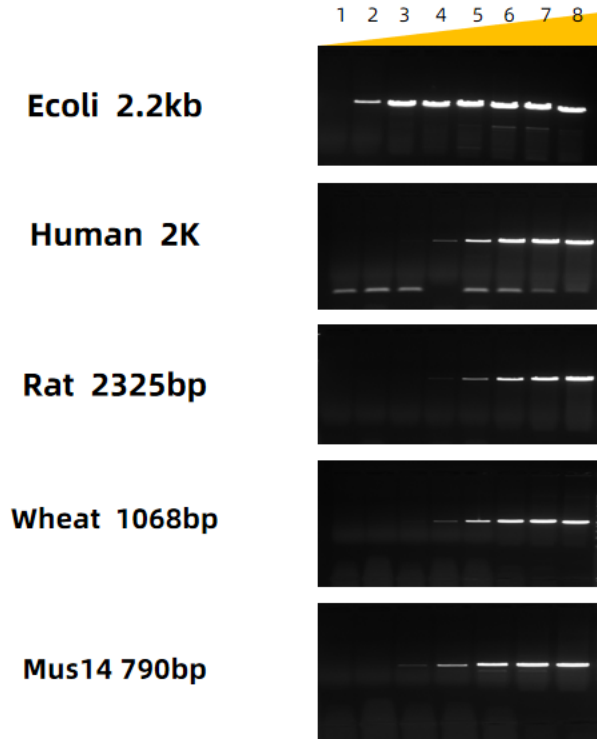
1-2: PCR from Human gDNA, from 807bp to 3.73kb;
3-4: PCR from Rat gDNA, from 1323bp to 3648bp;
5-6: PCR from Mouse gDNA, from 1395bp to 5187bp;
7-8: PCR from Wheat gDNA, from 1149bp to 3762bp;
9-10: PCR from Rice, from 803bp to 3729bp;
11-12: PCR from Human cDNA, from 1449bp to 4043bp

13-14: plant cDNA模板, from 1000bp to 2442bp
15-16: GC%: 62.7%-78.1%, from 800bp to 735bp;
17-18: AT%: 59%-77%, from 604bp to 994bp; ;
19-20: PCR from Arabidopsis gDNA, from 1000bp to 2715bp;
21-22: PCR from Lambda DNA, from 1000bp to 3000bp;
23-24: PCR from Zea Mays, from 1000bp to 3000bp;

Comparing the amplification success rate of PowerPol and other competing products from 24 primers

Conclusion: PowerPol 2X PCR Mix (RK20718) can successfully amplify 23 pairs of primers, and the amplification success rate is significantly higher than other competing products

Data: High sensitivity



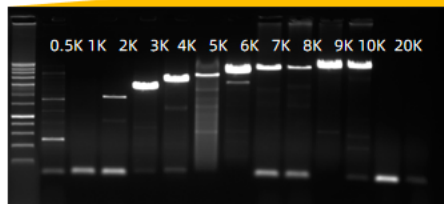
Concentration:

1. 1pg
2. 10pg
3. 100pg
4. 1ng
5. 10ng
6. 50ng
7. 100ng
8. 200ng

Conclusion: PowerPol 2X PCR Mix (RK20718) has a detection sensitivity of 1 ng -10 ng for complex templates (such as animal and plant gDNA), and a detection sensitivity of about 10 pg for simple templates (such as E. coli gDNA).

Data: Amplifying long fragments

Human gDNA

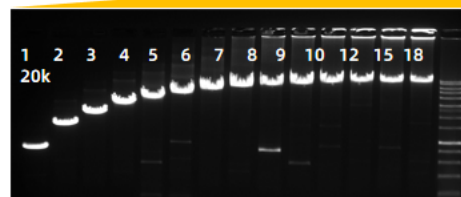


PowerPol
2 X PCR Mix

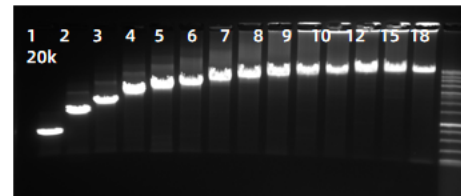
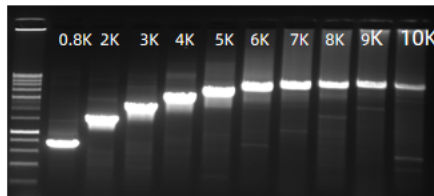
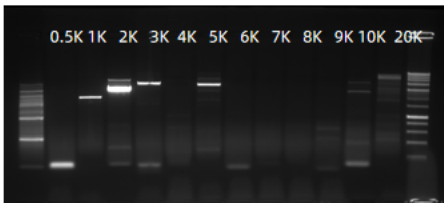
PBC4 plasmid DNA



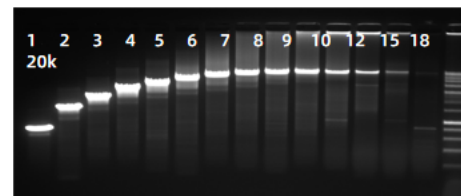
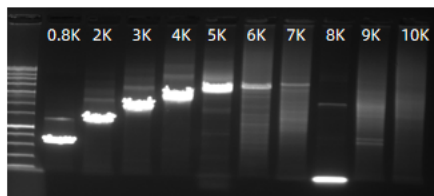
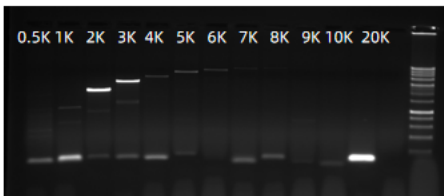
Lambda DNA



Vendor A



Vendor B



Conclusion: PowerPol 2X PCR Mix (RK20718) can amplify Human gDNA up to 10Kb, PBC4 (plasmid) DNA up to 10Kb, and Lambda DNA up to 20Kb, Powerpol has the best performance comparing to 2 other vendors

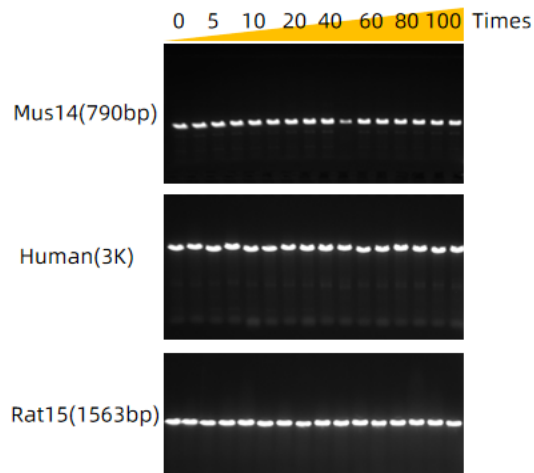
Data: Compatibility for rough templates



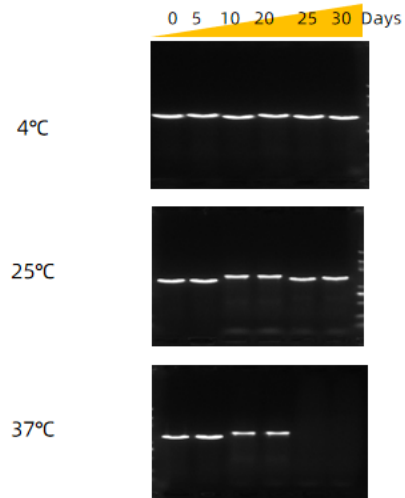
PCR detection of crude extracts from soil (16S), rice (Rice) and rat tail (Mus)

Conclusion: PowerPol 2X PCR Mix (RK20718) is better than other competitors in terms of product and amplification success rate

Data: Stability



PowerPol 2X PCR Mix (RK20718) has been repeatedly frozen and thawed for 100 times, and its performance is very stable in different species and batches.



PowerPol 2X PCR Mix (RK20718) can be stored at 4°C and 25°C for 1 month, and can be stored at 37°C for 2 weeks. Instability appears at 3 weeks. The sample used is Rat gDNA, 1563 bp

Gloria Nova HS series Kit & Master Mix

Gloria Nova HS series high-fidelity enzymes have excellent amplification effects on various complex templates and low starting amount templates, could be used for gene cloning and genotyping.

Features:

- Modified enzymes, with higher fidelity performance and yielding;
- Antibody blocked for greatly specificity;
- Wide adaptability, it can overcomes high GC templates and ordinary templates;
- High tolerance for inhibitors such as humic acid, cations, and ethanol,



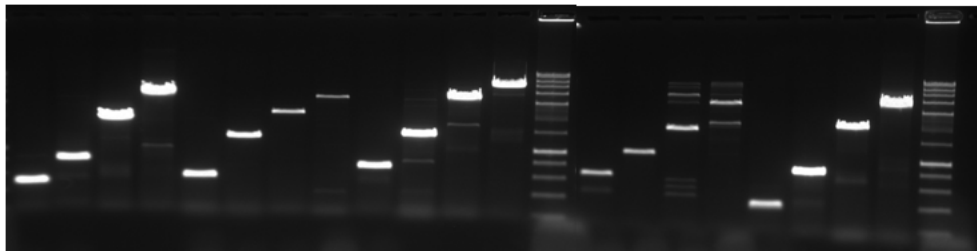
Gloria Nova HS PCR Kit
Catalog:RK20714



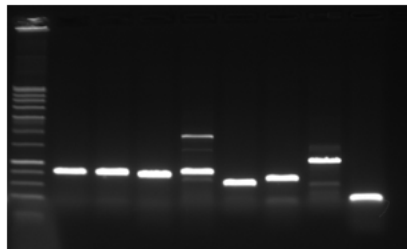
Gloria Nova HS 2X Master Mix
Catalog:RK20717

Data: high amplification success rate

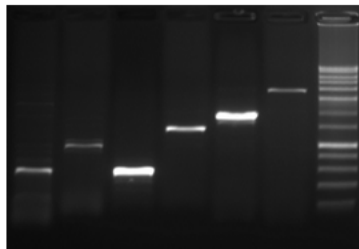
Human Rat Mus Wheat Rice



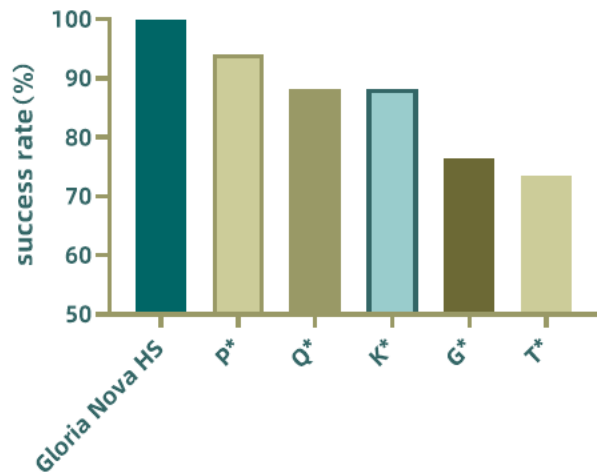
High AT High GC



plant cDNA Human cDNA



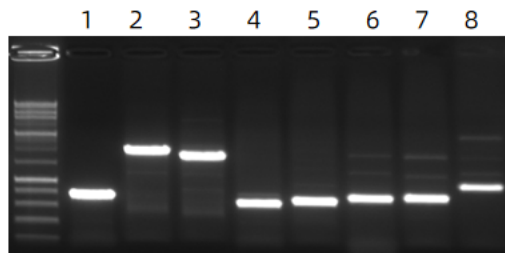
Amplification success rate of 34 primer pairs
(GC content of the amplicons range from 23-78%)



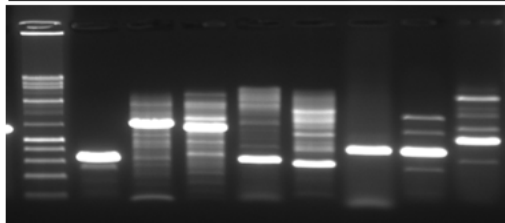
RK20717 has a 100% success rate for templates with d23%-78% GC content from 34 pairs of primers .
The corresponding amplicon GC content is.

Data: High specificity

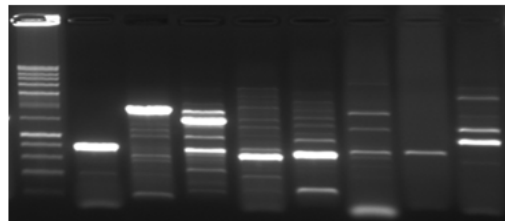
Gloria nova HS 2X
Master Mix(RK20717)



Vendor-N



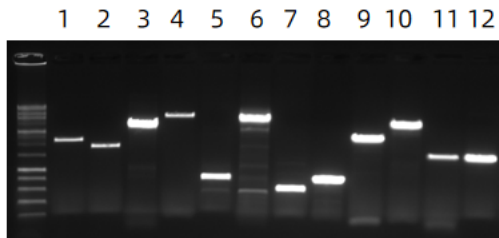
Venfor-T



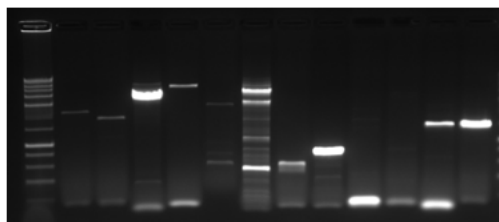
- 1: Human cDNA
- 2: Human
- 3: Human
- 4: Mus
- 5: Mus
- 6: Mus
- 7: Wheat cDNA
- 8: Zea Mays

Data: High yeilding

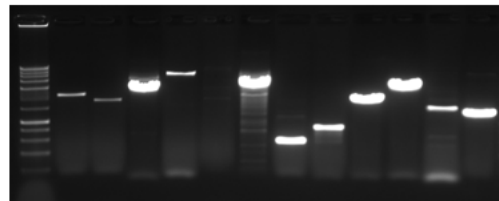
Gloria nova HS 2X
Master Mix(RK20717)



Vendor-N

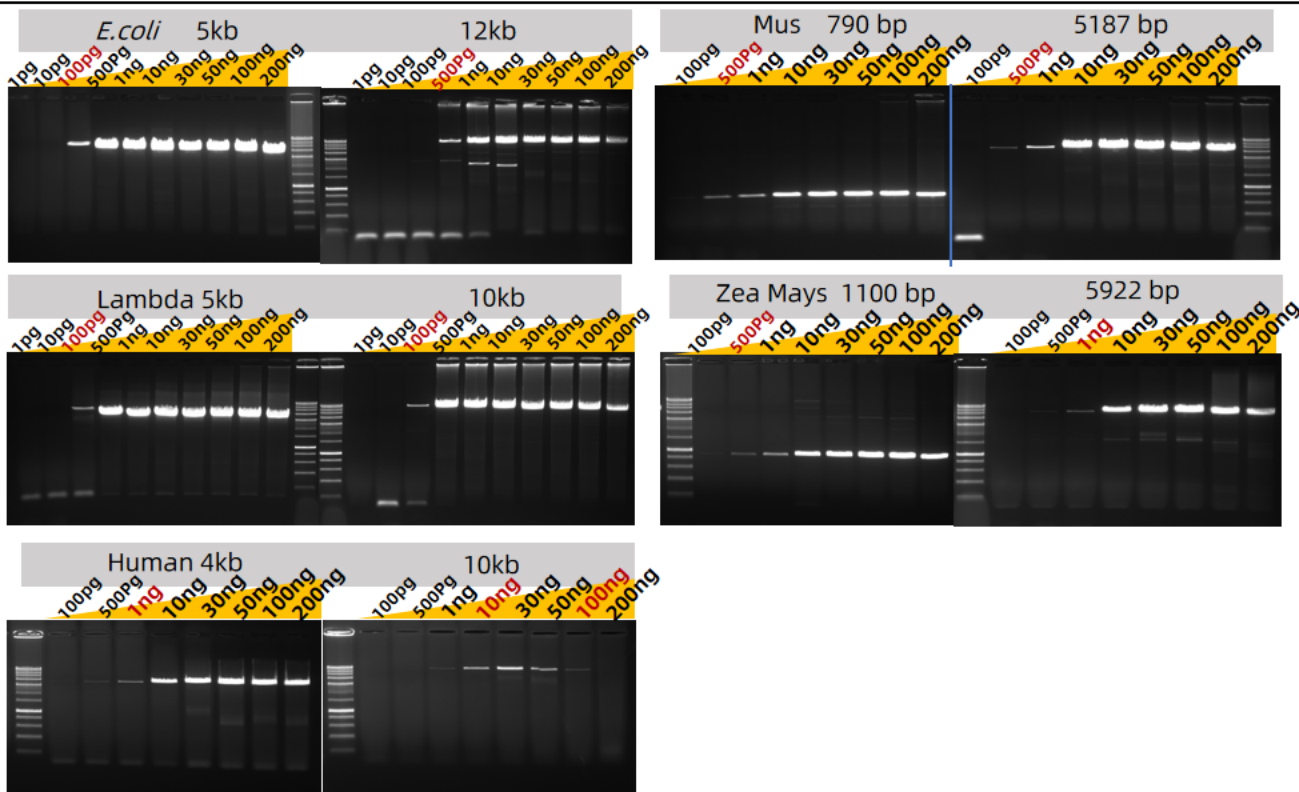


Venfor-T



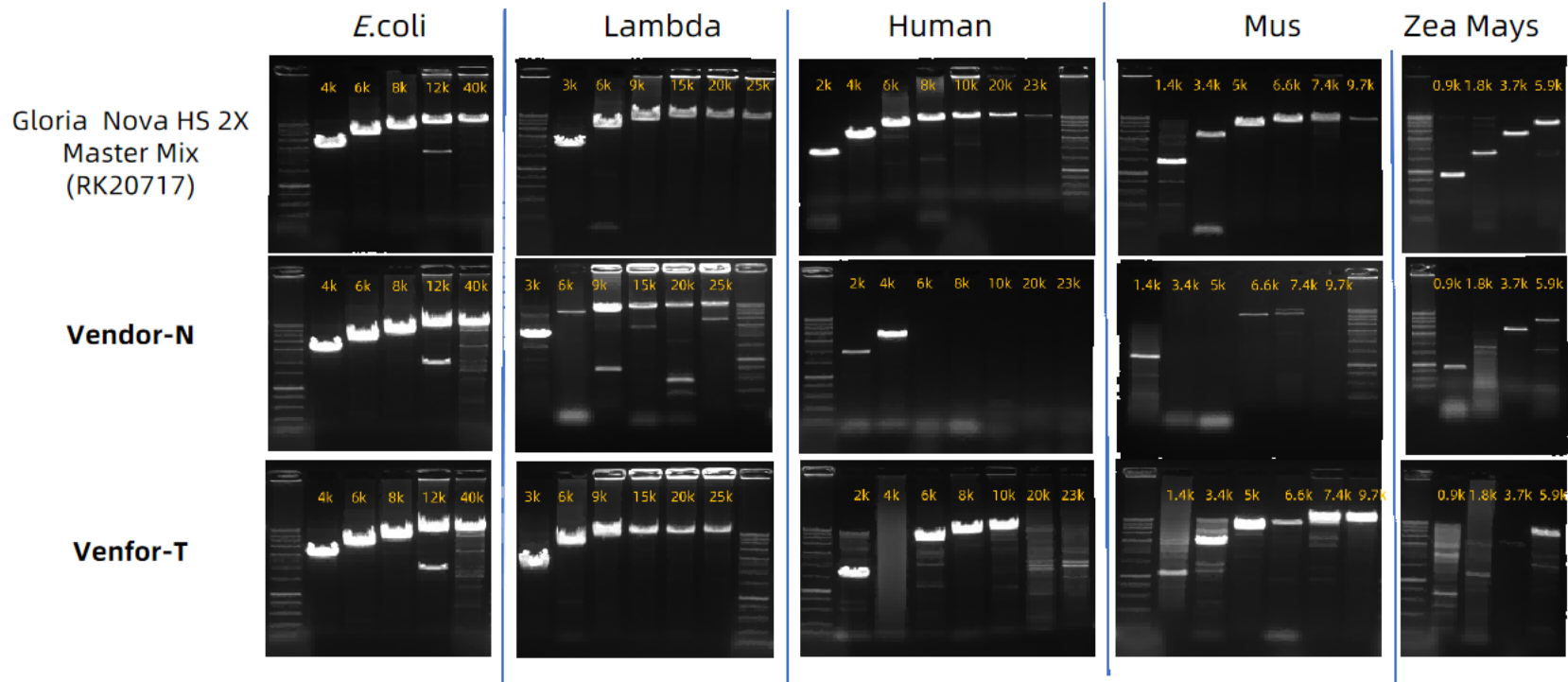
- 1: Rat
- 2: Rat
- 3: Rice
- 4: Zea Mays
- 5: Human
- 6: Human
- 7: Zea Mays cDNA
- 8: Human cDNA
- 9: Mus
- 10: Mus
- 11: Rat cDNA
- 12: Human cDNA

Data: High specificity



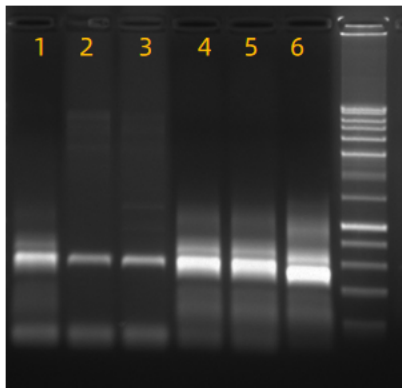
For simple samples, such as *E. coli*, the minimum starting amount can reach 100 pg. For more complex samples, such as Zea Mays, the minimum starting amount is 1 ng. Gloria Nova HS series high-fidelity enzymes show High sensitivity to different samples.

Data: Amplifying long fragments



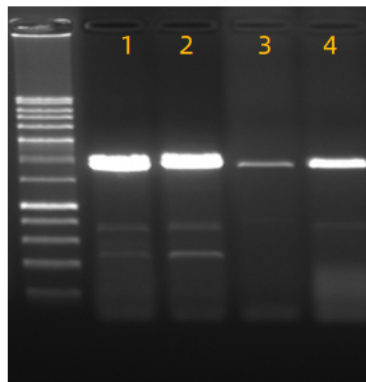
Data: Amplifying crude templates

16s V1-V3



- 1 Flower bed soil (rough extraction)
- 2 Farmland soil (rough extraction)
- 3 Silt (rough extraction)
- 4 Flower bed soil (fine extracted)
- 5 Farmland soil (fine extraction)
- 6 Silt (fine extraction)

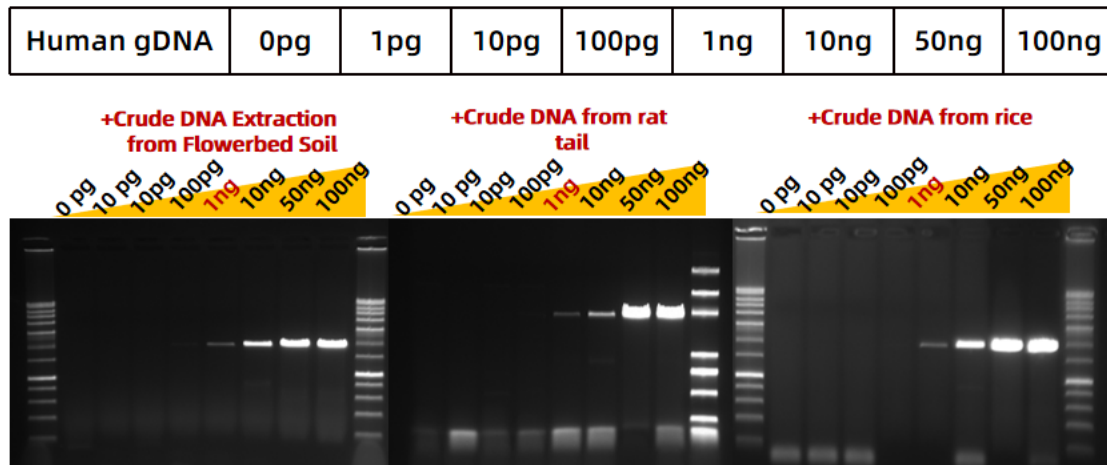
rice 45 (2100bp)



- 1 Rice leaf (crude extraction by CTAB method)
- 2 Rice leaves (Rough extraction by PVP non-toxic method)
- 3 Rice leaves (crude extraction by boiling method)
- 4 Rice seeds (crude extraction by CTAB method)

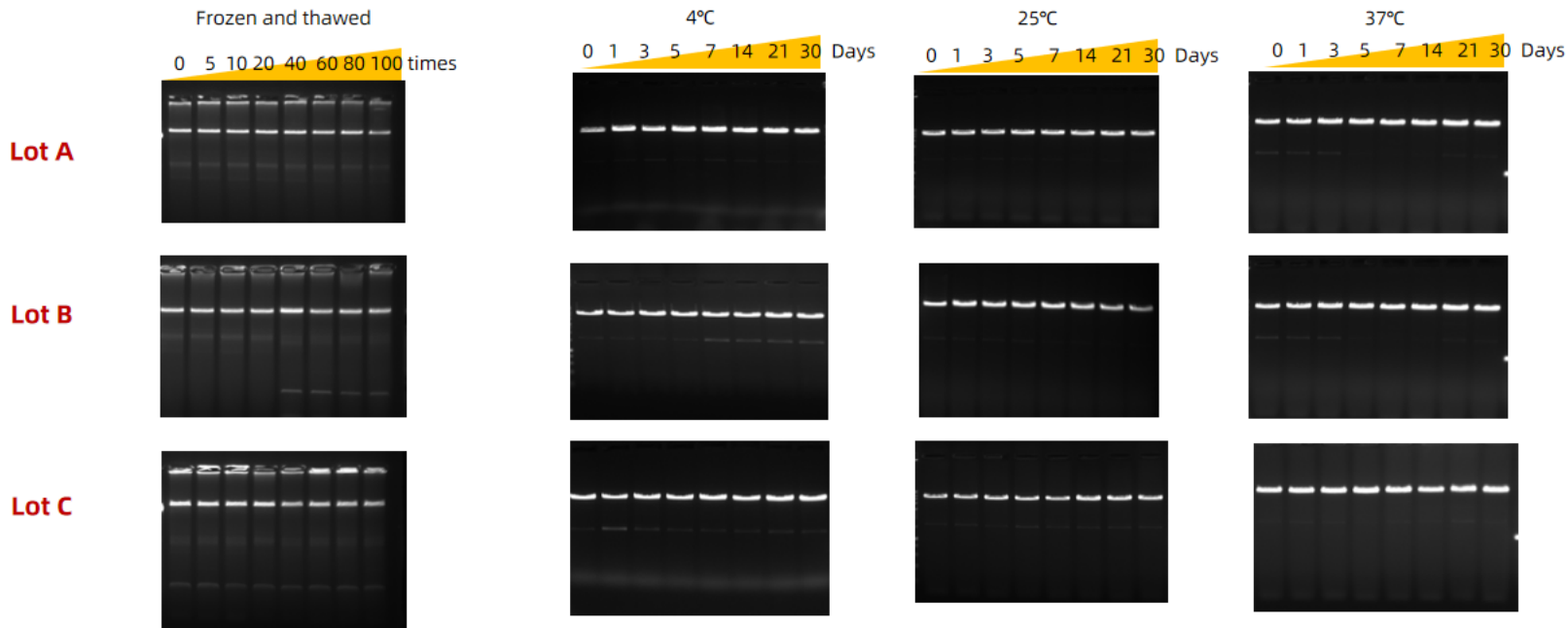
Gloria nova HS 2X Master Mix (RK20717) is suitable for the amplification of crude samples. Different crude extraction methods were used to extract DNA from soil and plant samples, and they all showed good amplification performance.

Data: High tolerance



The soil crude extracts, rat tail crude extracts, and rice leaf crude extracts were used as pollution scenarios, and different input amounts of Human gDNA (amplified fragment 2kb) were mixed as amplification templates (final input amounts). The results show that under the interference of other non-template DNA, RK20717 only needs 1 ng of the target template to successfully amplify.

Data: Stability



After 5 to 100 times of repeated freezing and thawing, the amplification performance of the three batches of Gloria nova HS 2X Master Mix (RK20717) did not decrease.

The amplified sample is Human gDNA

After being placed at 4°C, 25°C, and 37°C for 1 to 30 days, the amplification performance of the three batches of Gloria nova HS 2X Master Mix (RK20717) did not decrease.

The amplified sample is Zea Mays gDNA

ABScript III RT Master Mix for qPCR with gDNA remover (RK20429)

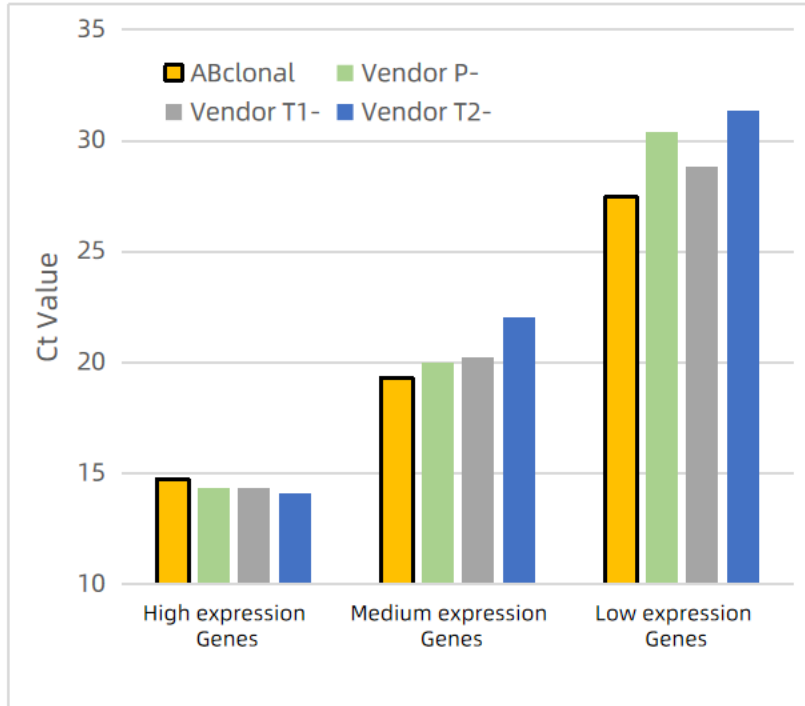
ABScript III RT Master Mix for qPCR with gDNA remover is a one-step reverse transcription reagent suitable for RT-qPCR. It only needs addition of sample once, and it can be used in the same tube to remove gene DNA contamination and reverse transcription reaction

- Features:
- Higher reverse transcription efficiency
- High Efficient of gDNA removal, one tube reaction for gDNA removal and cDNA synthesis
- Easy to operate
- Tolerance to inhibitors, improve cDNA production
- improved performance for low abundance expression genes, higher reversal efficiency and sensitivity



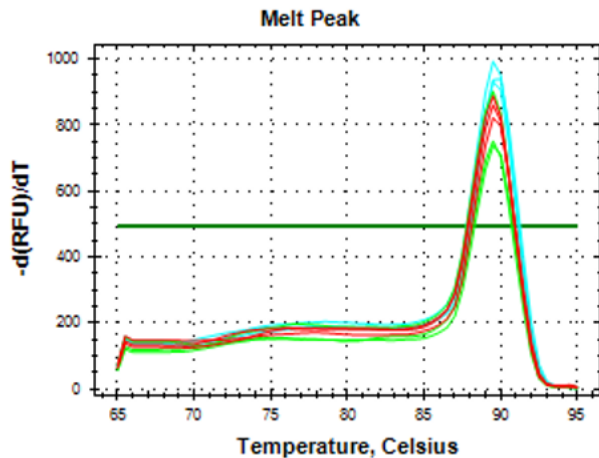
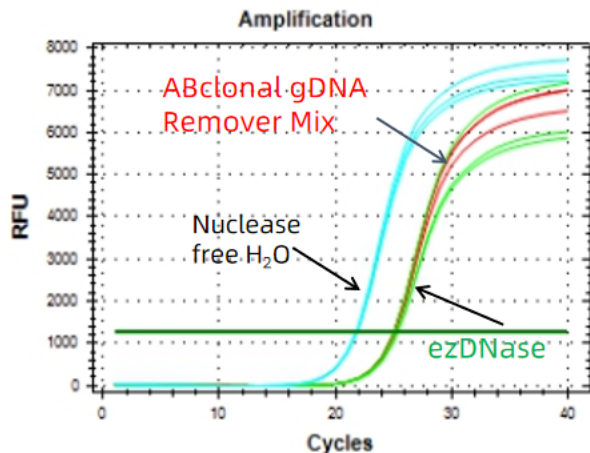
**ABScript III RT Master Mix
for qPCR with gDNA
Remover
Catalog:RK20429**

Data: High efficiency for low abundance gene



Taking 1 μ g tomato RNA as a template, using ABScript III RT Master Mix for qPCR with gDNA remover and other three vendors, following the protocols, and detection of the expression level with qPCR from cDNA. The results showed ABScript III's reverse transcription efficiency is higher and sensitivity is better.

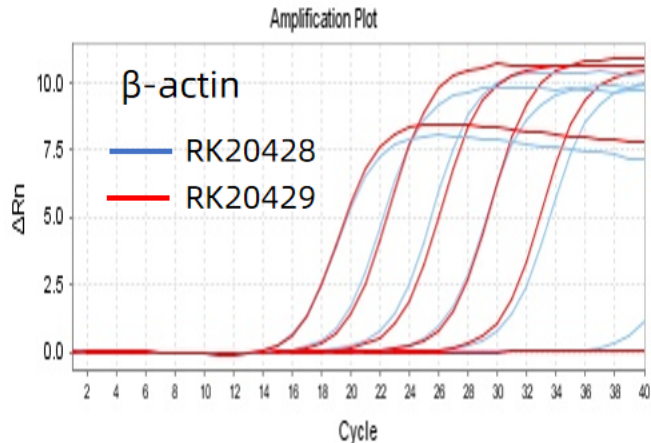
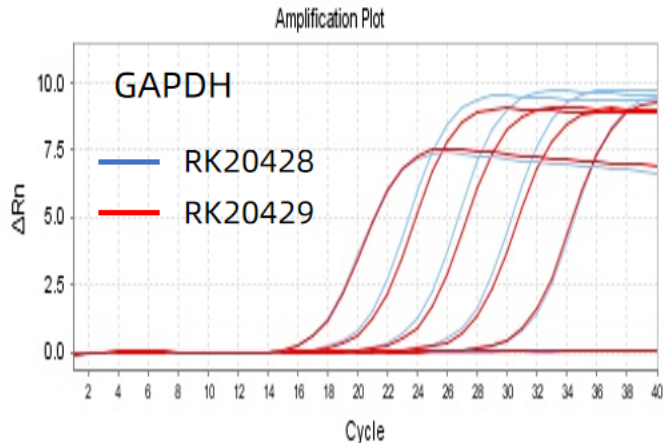
Data: High efficiency for gDNA removal



Mix 100 ng gDNA into 100 ng RNA, and treat them with Nuclease free H₂O (fluorescent blue), ABclonal gDNA Remover Mix (red), and ezDNase (T-brand green) for 2 minutes, and then use the same reverse transcription reagent for RNA reverse transcription.

The results show that gDNA Remover Mix can quickly digest gDNA in the system without effecting RNA, and the digestion efficiency is equivalent to T-brand ezDNase.

Data: ABScript dsDNase has no affection on RT efficiency



Using rat Total RNA (without gDNA) as a template, reverse transcription was performed with RK20428 ABScript III RT Master Mix (blue curve) and RK20429 ABScript III RT Master Mix with gDNA remover (red curve), and the reverse transcription products were detected by qPCR. The results show that there is no significant difference between the two, indicating that the addition of ABScript dsDNase will not significantly affect the efficiency of reverse transcription.



Products for Diagnostic



03

Products for Diagnostic-2021

Application	Cat. No.	Products	Features
qPCR	RK21208	Entrans 2X qPCR Probe Master Mix	Antibody blocking+Chemical modification
	RK21209	Entrans qPCR Probe Kit	Antibody blocking
	RK21210	Entrans qPCR Probe Set	Antibody blocking
	RK21212	Entrans 2X qPCR Probe Master Mix V2-High sensitivity	Antibody blocking+Chemical modification
	RK21222	Entrans 2X qPCR Probe Master Mix with UDG-High sensitivity	Antibody blocking+Chemical modification
RT-qPCR	RK20411	ABScript III One Step RT-qPCR Probe Kit with UDG V2	ABScript III, Antibody blocking taq RT+taq+buffer+UDG
	RK20412	ABScript III One Step RT-qPCR Probe Kit with UDG V5	ABScript III, Antibody blocking taq Enzyme+buffer
	BM0176	2X One Step RT-qPCR Probe Master Mix	Reaction in one tube

Products for Diagnostic-2021

Application	Cat. No.	Products	Size
RT	RK21400	ABScript II Reverse Transcriptase	200,000 U/mL
	RK20408	ABScript III Reverse Transcriptase	200,000 U/mL
RI	RK21401	RNase Inhibitor, Mammalian	40,000 U/mL
UDG	RK20543	Heat-labile UDG (1,000 U/mL)	1,000 U/mL
	RK20527	Uracil-DNA Glycosylase (UDG)	5,000 U/mL
Taq antibody	RK20545	Taq Antibody (5,000 U/mL)	5,000 U/mL

Applications

Fields	Applications
Infectious diseases	Molecular diagnosis of DNA and RNA pathogens in the direction of human medicine For example: Sars-Cov-2, HIV, HPV, HBV, etc
Tumors and genetic diseases	Detection of specific genes for tumors and genetic diseases For example: gene expression, mutation, deletion, rearrangement, etc
Animal diseases	Molecular diagnosis of DNA and RNA pathogens in the direction of animal diseases For example: swine fever, African swine fever, pseudorabies virus, blue ear virus, etc
Food safety	Food safety pathogenic microorganism detection and genetically modified crop detection
Environmental	Water quality and air pollution inspection
Customs quarantine	Molecular diagnosis of pathogens of imported and exported goods

ABScript III One Step RT-qPCR Probe Kit with UDG V5 (RK20412)

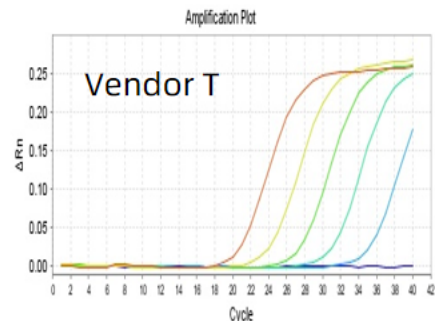
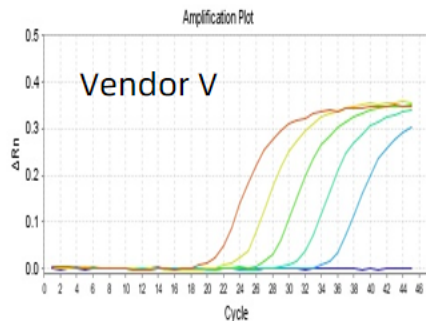
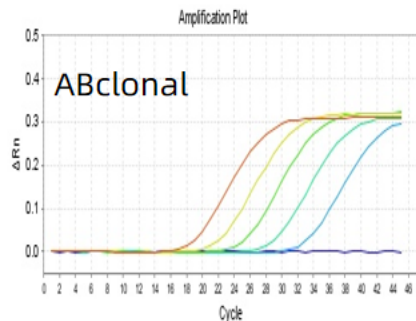
ABScript III One Step RT-qPCR Probe Kit with UDG V5 is a universal kit that uses the probe method for RT-qPCR reactions. This kit introduces a dUTP/UDG anti-fouling system, which is very suitable for the detection of RNA viruses and other trace RNAs.

- RT+qPCR in one tube
- Contains dUTP/UDG anti-fouling system;
- Compatible with multiple probe systems;
- Suitable for SARS-Cov-2 detection;
- Good stability, the activity will not be significantly affected when stored at 37°C for a week



ABScript III One Step RT-qPCR Probe Kit with UDG V5
Catalog:RK20412

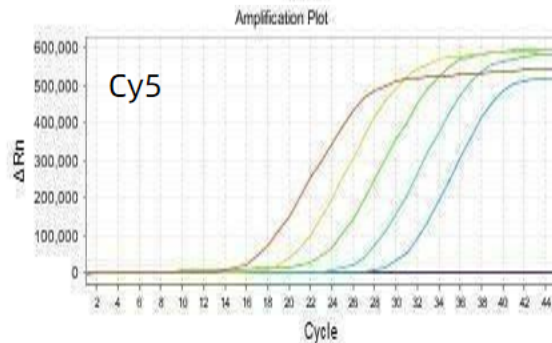
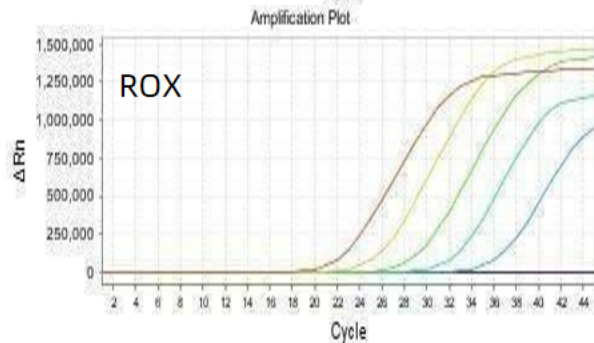
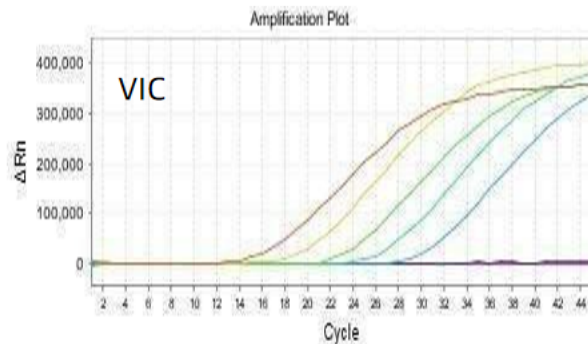
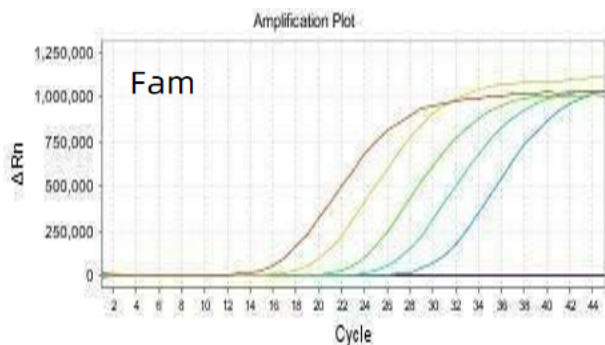
Data: High sensitivity



log	2	1	0	-1	-2	E (%)	R ²
ABclonal	21.061922	24.343271	27.594267	31.290552	35.469372	90.38	0.997
Vendor V	23.228533	26.459255	29.930073	33.623936	37.719734	89.08	0.9979
Vendor T	23.345409	26.746599	30.082512	33.610199	37.866066	89.89	0.9975

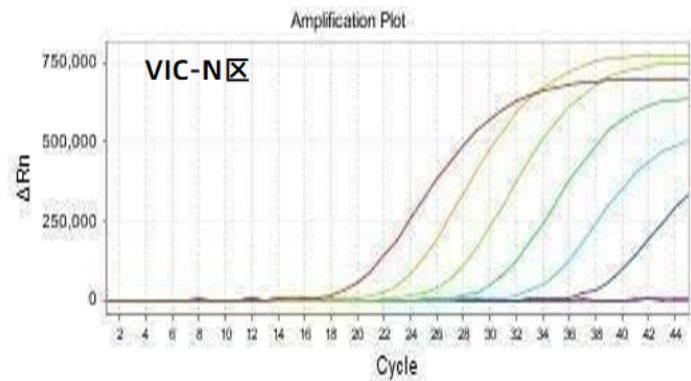
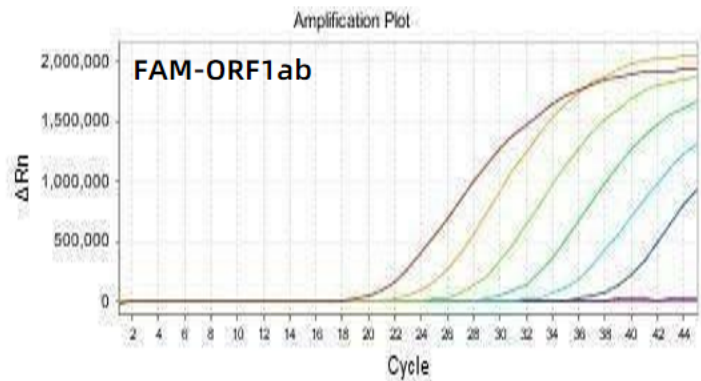
Using mouse RNA as a template (100 ng/ μ l as the starting concentration), 5'-end TAMRA fluorescently labeled probe, 10-fold dilution, can detect the target gene very well, and has a higher level than other vendors.

Data: Suitable for multiplex reaction



Using mouse RNA as a template (100 ng/μl as the starting concentration), 10-fold serial dilutions were used for amplification with a quadruple amplify system. The results show that ABScript III One Step RT-qPCR Probe Kit with UDG V5 is compatible with quadruple amplify system

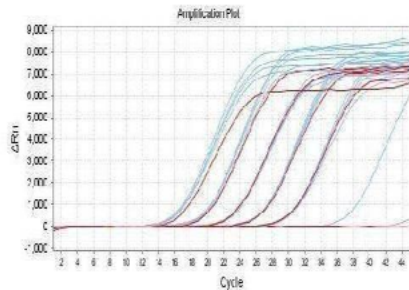
Data: applied for detection of SARS-Cov-2



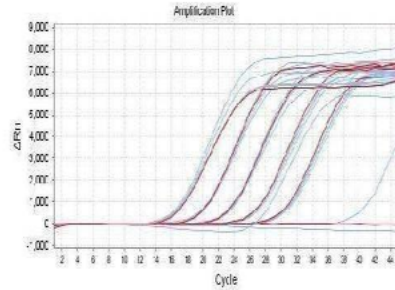
log	-2	-3	-4	-5	-6	-7	-8	E (%)	R ²
FAM-ORF1ab	23.434114	26.416568	29.913333	33.676513	37.25661	40.837371	Undetermined	92.25	0.999
VIC-N	21.887704	24.968435	28.426713	32.089382	36.056823	40.761581	Undetermined	84.75	0.9949

Using 10-fold diluted synthesised Sars-Cov-2 fragment as template, ABScript III One Step RT-qPCR Probe Kit with UDG V5 shows good performance of detecting ORF1 gene and N gene.

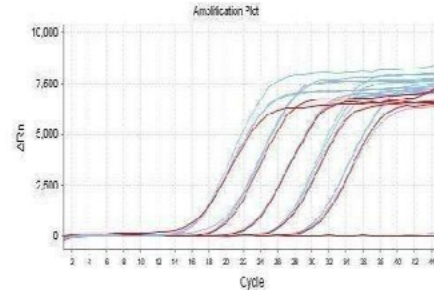
Data: Stability



4°C 存储1d、3d、5d、7d



37°C 储存1d、3d、5d、7d



冻融10、30、50rxn

37°C for 7 days, or frozen and thawed 50 times, ABScript III One Step RT-qPCR Probe Kit with UDG V5's performance did not be affected (inner reference was red)

Entrans 2X qPCR Probe Master Mix with UDG (RK21222)

Entrans 2X qPCR Probe Master Mix with UDG is developed for qPCR reaction based on the probe method. The Taq is blocked by antibody and chemical modified, with UDG for anti-pollution.

- Thermal stability: 37°C
- High sensitivity: 10 copies/25ul
- Anti-pollution system: UDG anti-pollution performance
- Multiple detection: 3-4 repeats
- Rapid amplification: reduce the pre-deformation time, shorten the reaction time, amplification finished within 50 minutes



Entrans 2X qPCR Probe Master Mix with UDG
Catalog:RK21222

Data: High sensitivity

	RK21222
P72-FAM(copies/ul)	1
CD2V-VIC(copies/ul)	0.6
MGF-ROX(copies/ul)	1.6

25ul reaction system with 5ul template

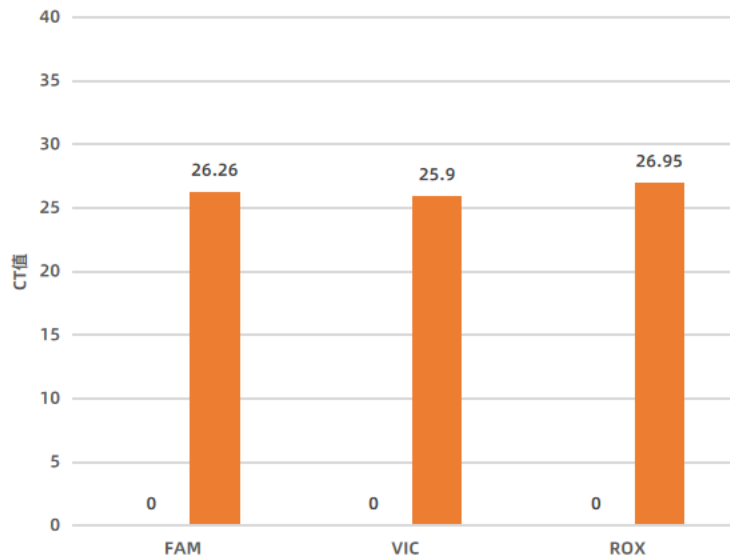
The number of copies converted to the entire system is as follows:

	RK21222
P72-FAM(copies/25ul)	5
CD2V-VIC(copies/25ul)	3
MGF-ROX(copies/25ul)	8

The start amount reached 10copies/25ul

Data: Anti-aerosol pollution with UDG

It can be seen intuitively from the chart that the Entrans 2X qPCR Probe Master Mix with UDG RK21222 reaction system UDG enzyme has a very obvious anti-pollution effect in the three channels.



A diagonal, semi-transparent image showing a close-up of laboratory glassware, including several microcentrifuge tubes and pipette tips, set against a white background.

NGS Lib Prep Kits

A large, bright yellow circular graphic on the right side of the slide, partially cut off by the edge.

04

NGS Lib Prep Kits - 2021

Platform	Cat. No.	Name
illumina	RK20254	Rapid CE DNA Lib Prep Kit for Illumina V2
	RK20255	Rapid Plus DNA Lib Prep Kit for Illumina V2
	RK20208	Rapid Plus DNA Lib Prep Kit for Illumina
	RK20223	Rapid Plus DNA Lib Prep Kit (no DDREs) for Illumina
	RK20217	Rapid Max DNA Lib Prep Kit for Illumina
	RK20228	Scale ssDNA-seq Lib Prep Kit for Illumina V2
	RK20220	Scale Methyl-DNA Lib Prep Kit for Illumina

NGS Lib Prep Kits - 2021

Platform	Sample	Cat. No.	Name
illumina	mRNA	RK20341	Poly(A) mRNA Purification Module
		RK20353	First Strand Synthesis Module
		RK20346	Second Strand Synthesis Module
		RK20367	First Strand Synthesis Module V2 (Stranded)
		RK20368	Second Strand Synthesis Module V2 (Stranded)
		RK20349	Stranded mRNA-seq Lib Prep Module for Illumina
		RK20350	mRNA-seq Lib Prep Module for Illumina
		RK20301	Stranded mRNA-seq Lib Prep Kit for Illumina
		RK20302	mRNA-seq Lib Prep Kit for Illumina
		RK20340	Poly(A) mRNA Capture Module
		BK0028	Fast RNA-seq Lib Prep Kit V2
	RNA	BK0015	rRNA Depletion Module (H/M/R) V2
		RK20303	Whole RNA-seq Lib Prep Kit for Illumina

ABclonal Rapid series NGS Lib Prep Kits

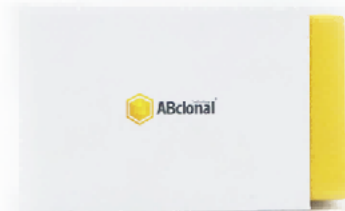
The Rapid DNA Lib Prep kit provides a streamlined and efficient method to construct DNA library for next generation sequencing (NGS) with Illumina platforms. The entire protocol can be completed in 2 hours.

Rapid CE V2 improves the cost performance.

Rapid Plus V2 contains the Damage DNA Repair Module (DDRE), increasing the library constructing successful rate for difficult sample

Features:

- Easy for operating
- Starting from fragmented input-DNA (1 - 1000 ng)
- significant cost performance (Rapid CE V2)
- Damage DNA Repair Module (Rapid Plus V2)

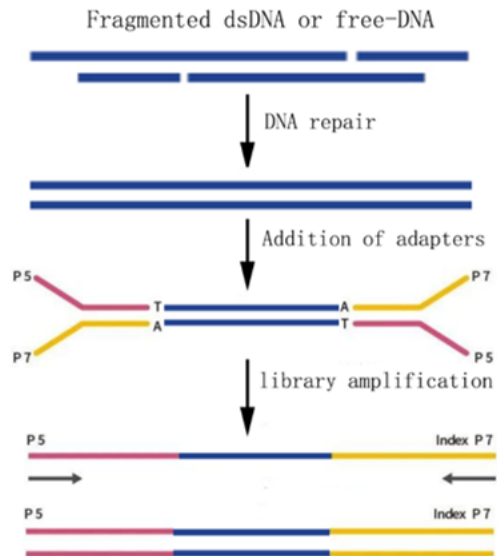


**Rapid CE DNA Lib Prep Kit
for Illumina V2
Catalog:RK20254**

**Rapid Plus DNA Lib Prep Kit
for Illumina V2
Catalog:RK20255**

8 RXN/24 RXN/96 RXN

Workflow



Applications

	Rapid CE V2	Rapid Plus V2
Cat. No.	RK20154	RK20255
Starting amount	1 ng~1000 ng	1 ng~1000 ng
DDRE	No	Yes
Features	Cost performance	High performance, suitable for tumor research
Applications	WGS, NIPT, mNGS	WGS, tumor analysis, ChIP-seq

A diagonal, semi-transparent image of a microscope lens or objective lens, showing its circular elements and metallic structure, positioned on the left side of the slide.

Customer Needs Analysis

A large, bright yellow circular graphic element on the right side of the slide, partially cut off by the edge.

05

ABclonal RT-qPCR/RT-PCR Products

RNA extraciton: Trizol

Reverse Transcription:

ABscript II: RK21400 RK20400 **RK20402 RK20403**

ABscript III: RK20408 **RK20428 RK20429**

qPCR : Universal RK21203, Genius RK21204- RK21207
(RT-qPCR for analysing gene expression levels)

PCR: Gloria Nova RK20717

(RT-PCR: gene clone from cDNA)

DNA extraction: gel extraction kit


For Research

ABclonal has a complete scientific research molecular enzyme product line, which can be divided into 5 categories

Catagories	Products
PCR	Gloria Nova HS, PowerPol
qPCR	Universal series, Genius series
Reverse Transcription	ABscript III series, ABscript II series
Gene clone	2X MultiF Seamless Assembly Mix, Endonuclease, T4 ligase
Extraction of Nucleic Acid	Gel, Plasmid, DNA, RNA, Trizol

Abclonal gene clone products

Endonuclease: Over 40 kinds



Ligation: T4 ligase High conc: RK21500
Normal conc: RK21501
Quick ligation kit: RK20500

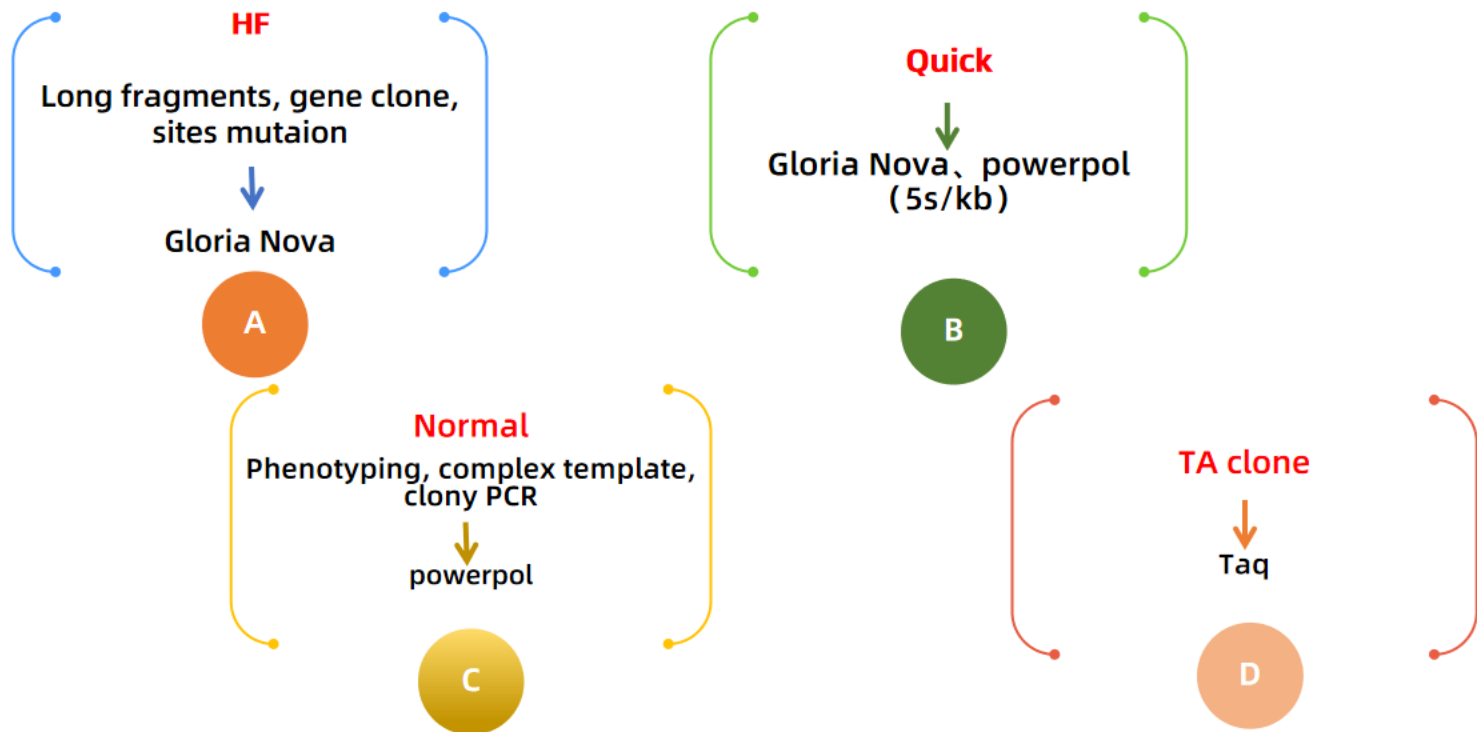
HF DNA polymerase: Gloria Nova RK20717

Extraction kits: gel, plasmid

Electrophoresis: DNA marker
Nucleic acid dye
Agrose

Product	Cat. No,
AgeI	RK21125
BamHI	RK21101
BsiWI	RK21107
EcoRI	RK21102
EcoRV	RK21106
HindIII	RK21108
KpnI	RK21104
NheI	RK21111

ABclonal DNA Polymerase



Customers Needs

Application	Needs	Products	Comment
Sanger sequencing	PCR	Powerpol series	ABI: 3730/Sanger
NGS	Tumor analysis	RK20255 Rapid plus V2/ RK20208 Rapid plus RK30112 AFTSpin FFPE DNA Isolation Kit RK20229 FFPE DNA QC Kit RK20257 AFTMag NGS DNA Clean Beads	NGS
	Research	DNA: RK20254 Rapid CE V2/RK20255 Rapid plus V2 Methylation: RK20220 Scale series 16s rDNA: RK20717 Gloria Nova HS 2X Master Mix	
	Genetic disease analysis	RK20254 Rapid CE V2	
	NIPT	RK20254 Rapid CE V2	
Diagnostic	qPCR	RK20412 ABScript III One Step RT-qPCR Probe Kit with UDG V5 RK21222 Entrans 2X qPCR Probe Master Mix with UDG	qPCR (ABI, Biorad or Roche)
Bio-pharmacy	Gene clone	RT, ligation, MultiF Seamless Assembly Mix, HF DNA polymerase, qPCR	

THANK YOU

The image features a blurred office environment. In the background, three people (two men and one woman) are standing and talking near a large window. In the foreground, a desk is visible with a silver laptop, a tablet, and some papers with charts. A prominent yellow swoosh graphic curves across the right side of the image.