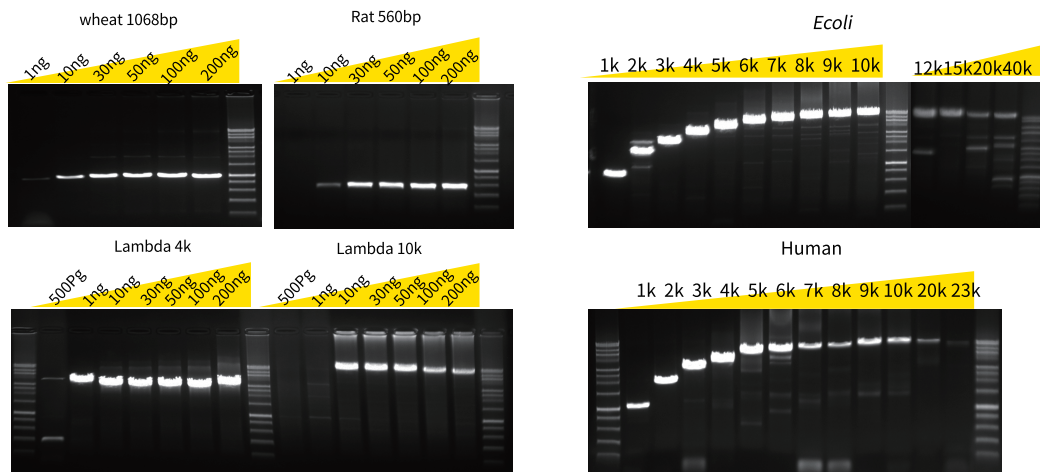




ABclonal Molecular Biology Reagent

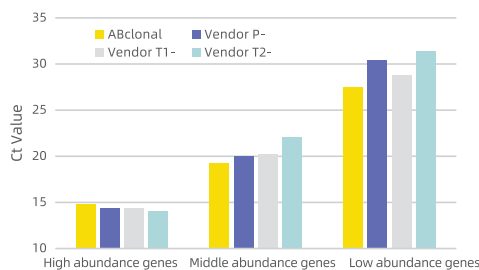
ABclonal molecular enzyme products cover most conventional molecular biology applications such as PCR, reverse transcription, qPCR, vector construction, etc. All products have passed strict QC tests and application verification, and the product quality is stable and reliable. Relying on a powerful R&D platform, ABclonal will continue to launch a variety of innovative and high-performance products.

Gloria Nova HS DNA Polymerase RK20714 & RK20715



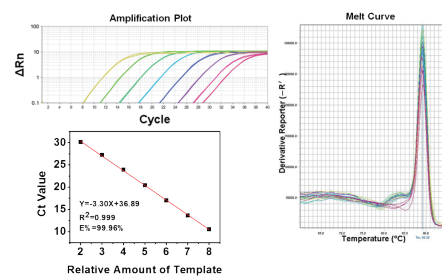
Using Gloria Nova DNA polymerase with HF buffer to amplify wheat, Rat, and Lambda DNA, the template input amount is 10ng-200ng, which can show good amplified bands. Using Gloria Nova DNA polymerase with HF buffer to amplify *E.coli* and Human DNA, the maximum amplification length reached 40 kb and 20 kb, and the amplification speed was about 20-30s/kb and 10-20s/kb.

ABScript III RT Master Mix RK20428 & RK20429



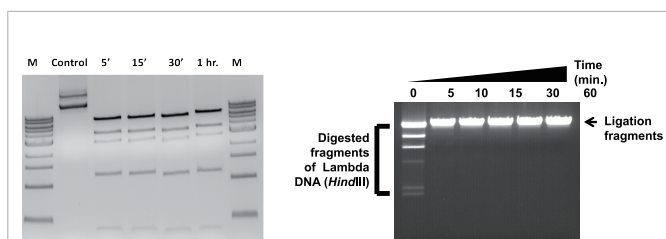
Using 1 µg tomato RNA as a template, using ABScript III RT Master Mix for qPCR with gDNA remover and other three brands of kits, reverse transcription according to the reaction conditions recommended by each brand, and qPCR detection of the obtained cDNA, the results showed that for the genes with low and medium expression abundance, ABclonal reverse transcription efficiency is higher and sensitivity is better.

2X Universal SYBR Green Fast qPCR Mix RK21203



E. coli genome with 10-fold serial dilution (copy number range of 10⁸-10¹⁰) was used as a template for the experiment. The amplification curve showed that the Ct value was evenly distributed between 10 and 30, and the reproducibility between wells was excellent (upper left); The results showed that the Ct value of each gradient perfectly matched the linear dilution ratio ($R^2=0.999$), and the efficiency of PCR was very high ($E\%=99.96\%$) (lower left); the melting curve showed that the amplification was highly specific (right).

T4 ligase + restriction endonuclease

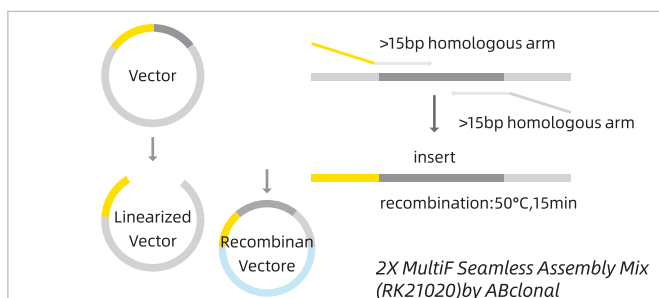


Not I can achieve rapid digestion within 5 mins.

T4 ligase can complete 95% ligation of 1 µg Hind III fully digested lambda DNA in 5 mins.

2X MultiF Seamless Assembly Mix

RK21020



2X Seamless Cloning Master Mix is a simple and efficient cloning reagent developed based on the principle of Gibson assembly. Compared with traditional molecular cloning methods, seamless cloning is simpler and more efficient.

STAR PRODUCTS

PCR*	RK20604	Taq 2X PCR Master Mix with Dye	
	RK20605	HotStart Taq 2X PCR Master Mix with Dye	
	RK20684	LongerAmp Taq 2X PCR Master Mix with Dye	
	RK20714	Gloria Nova HS PCR Kit	Hot
	RK20715	Gloria Nova HS 2X HF Master Mix	Hot
Reverse Transcription	RK21400	ABScript II Reverse Transcriptase	
	RK20400	ABScript II cDNA First-Strand Synthesis Kit	
	RK20402	ABScript II RT Master Mix for qPCR (5X)	
	RK20403	ABScript II RT Mix for qPCR with gDNA Remover	
	RK20428	ABScript III RT Master Mix for qPCR (5X)	Hot
	RK20429	ABScript III RT Master Mix for qPCR with gDNA Remover	Hot
qPCR	RK21203	2X Universal SYBR Green Fast qPCR Mix	Hot
	RK21204	Genious 2X SYBR Green Fast qPCR Mix	Hot
	RK21205	Genious 2X SYBR Green Fast qPCR Mix (No ROX)	
	RK21206	Genious 2X SYBR Green Fast qPCR Mix (Low ROX Premixed)	
	RK21207	Genious 2X SYBR Green Fast qPCR Mix (High ROX Premixed)	
Vector Construction	RK21020	2X MultiF Seamless Assembly Mix	Hot
	RK21500	T4 DNA Ligase (High Conc.) 2000 U/µL	
	RK21501	T4 DNA Ligase 400 U/µL	

20 kinds of restriction endonucleases, visit the official website for details (www.abclonal.com)