

Advancing Cancer Diagnostics
Improving Lives

Leica
BIO SYSTEMS

Fast forward to next
generation imaging

Introducing the
Aperio GT 450

Scale up Digital Pathology
operations by increasing throughput
in high volume pathology labs.

For research use only. Not for use in diagnostic procedures.

*International patent families including patent
applications and granted patents.



More than 30
Patents **SMARTER***

Be on time
Fast scans
No shipping
Continuous loading
Be more productive
Next generation imaging for **Technicians**
Auto QC
Fast-paced
First-time scan success
Cross-training
Easy to use

Designed to deliver rapid results with confidence for histotechnicians.

Directly load racks from coverslipper to scanner.

“The Aperio GT 450 is very easy to use and a companion in the lab.”

– Brittney Hosac - Lab Assistant, NeoGenomics

The products shown above, the HistoCore SPECTRA Workstation, in combination with the Aperio GT 450, are for Research Use Only (RUO).

For research use only. Not for use in diagnostic procedures.

- ! Assign priority cases.
- ✓ Automated image quality check and slide calibration during each scan.
- 🗂️ No-touch continuous rack loading during scanning.
- 📦 450 slide capacity packed into small size.
- 📷 Excellent image quality using Leica optics.



32 sec scan speed at 40x*.



81 slides per hour at 40x*.



Scan 120,000 slides per year operating the Aperio GT 450 for around 5 hours/day*.

* 15mm x 15mm scan area @ 40x; assumes 5 hr. scan time per day for 300 work days per year



Aperio GT 450 open face design allows you to continuously load rack while scanning is in progress to maximize productivity.



Assign priority cases for fast delivery of priority or routine cases directly to the Pathologist.



Featuring automatic image quality control, so you have image quality confidence before your scans reach the Pathologist.

For research use only. Not for use in diagnostic procedures.




Stats page allows you to view slides scanned/day/month/year, average scan area and average scan speed.

Login controls
Easy setup
Security
Store and forward
High speed data transfer
DICOM or SVS compatible

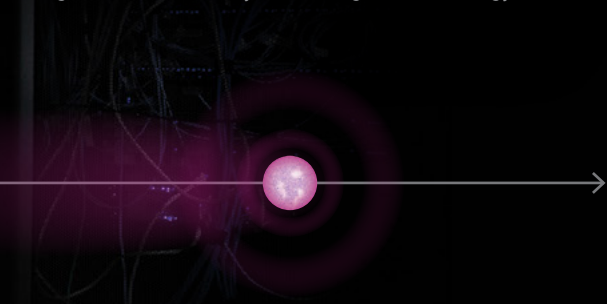
Next generation imaging for **IT Professionals** Flexibility
Large storage Encryption

Designed to deliver
fast, secure, and
scalable IT architecture
for IT Professionals.

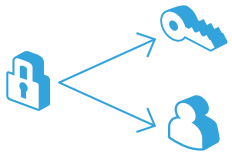


"The IT architecture for the Aperio GT 450, including the SAM central hub, is a gigantic leap forward to scale and support digital pathology IT operations."

– Chris Khacherian, UCLA Program Manager, Service Delivery, DGIT | Digital Technology



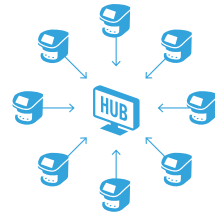
A secure, flexible and fast
IT solution to scale up your
Digital Pathology operations.



Cyber security including encryption and login controls.



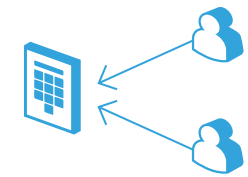
HL7 and PACS ready, for **integration** into LIS, LIMS or PACS.



Securely scan slides at a **spoke** location and store images at a **Hub** location for all sites to log in and view images.



Store and forward: store images temporarily then transfer during low IT traffic times.



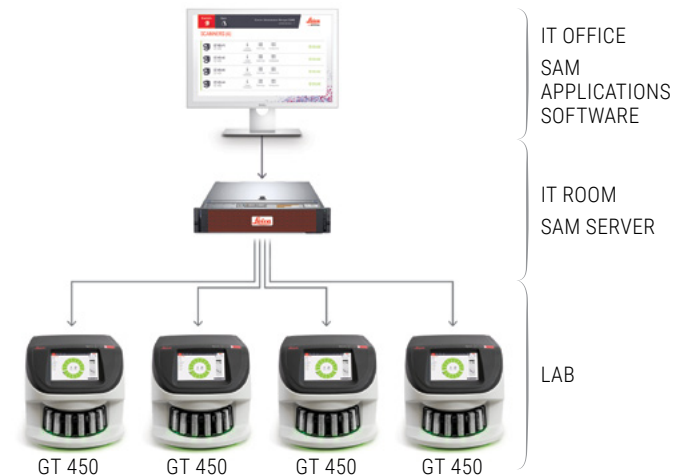
Set up user-specific **log in** for each Aperio GT 450.



A centralized Scanner Admin Manager (SAM) will allow IT professionals to scale up Digital Pathology operations securely and efficiently.




No more workstations needed. SAM server and software allow IT managers to set up and monitor GT 450 scanners via the network, including dashboard status views, PIN controls and log out times.



For research use only. Not for use in diagnostic procedures.

Fast viewing speeds
Faster turnaround time
High resolution
Limited rescans
Image quality
Integrated work-flow
Craftsmanship State-of-the-art
Next generation imaging for **Pathologists** Peace of mind
Resolution Precision Ease of use DICOM
Contrast

Designed to rapidly
deliver images with
excellent image quality
for Pathologists.



"I am really impressed with the sharpness
and contrast of the images. It is
definitely next-generation image quality."

– W. Dean Wallace M.D., Professor, Pathology and Laboratory Medicine, David
Geffen School of Medicine at UCLA

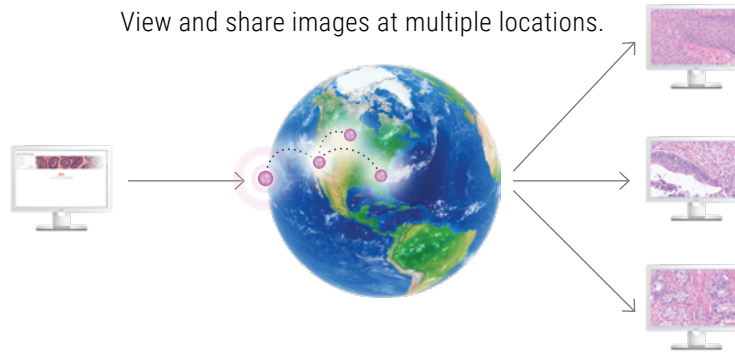
Aperio GT 450 utilizes a high
performance 40x objective
manufactured by Leica, the
company that has engineered
world class optics since 1841.



Aperio GT 450 illuminates tissue from both sides of the slide resulting in a 99.5% accurate tissue finder that recognizes faintly-stained tissue while excluding:

- > Pen marks
- > Stain residue
- > Scratches
- > Dust

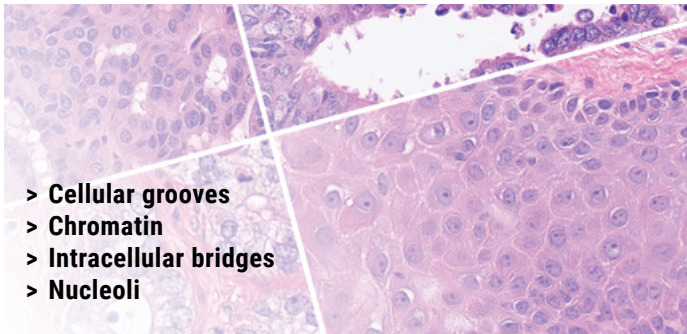
View and share images at multiple locations.



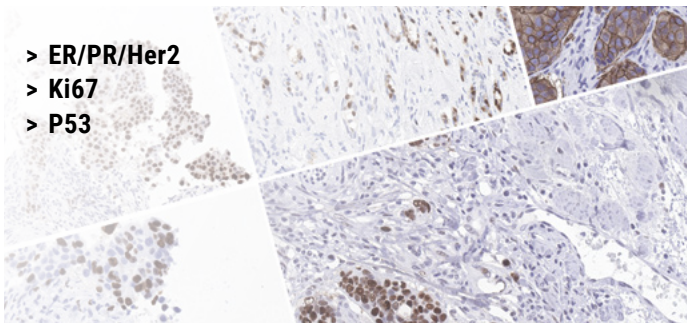
Aperio GT 450 applications:

- > Digital archiving
- > Drug development studies
- > Cancer research
- > Toxicology research
- > Basic cell biology research
- > Immunology research

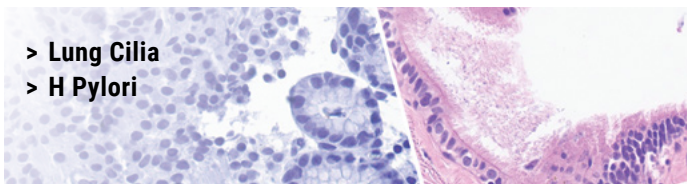
“Good cellular details at high power and good focus throughout the tissue.” – Sally Agersborg, MD, PhD, Medical Director, NeoGenomics Laboratories, Inc.



- > Cellular grooves
- > Chromatin
- > Intracellular bridges
- > Nucleoli



- > ER/PR/Her2
- > Ki67
- > P53



- > Lung Cilia
- > H Pylori

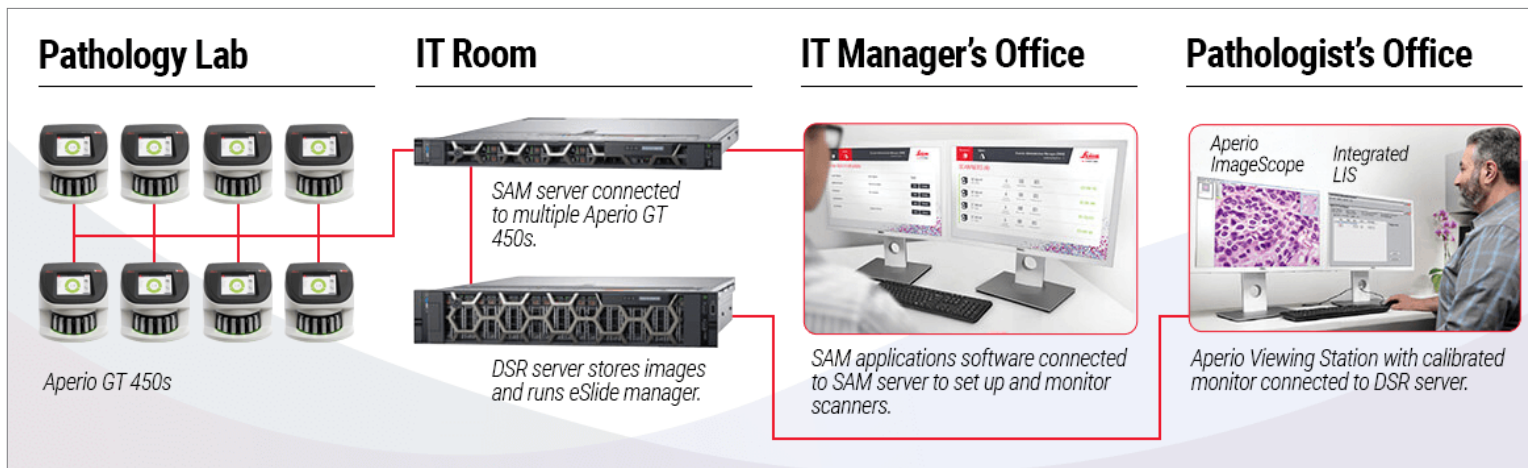
Access and organize your cases with Aperio eSlide Manager integrated into an LIS. View your case images with Aperio Viewer.

Aperio Viewer

Integrated LIS



From the lab to the IT room the Aperio GT 450 was designed to scale up digital pathology operations for **Histotechnicians**, **IT Professionals** and **Pathologists**



“The Aperio GT 450 has demonstrated in a workflow study at our laboratories substantial increases in case throughput while dramatically reducing hands on time for our technicians, which frees up additional FTE capacity that we can operationally utilize to respond to increasing annual slide volumes.”

– Julie Broccardo, Director of Anatomic Pathology Operations, NeoGenomics Laboratories, Inc.

Aperio GT 450 Summary of Specifications

| | |
|---|--|
| Maximum Slide Capacity | 450 |
| Rack capacity | 15 racks of 30 slides, 15 racks of 20 slides |
| Racks compatible with Leica HistoCore SPECTRA Workstation | Yes |
| Continuous rack loading while scanning | Yes |
| Priority rack scanning | Yes |
| Magnification | 40x |
| Resolution | 0.26 µm/pixel at 40x |
| Scan speed (15mm x 15mm area at 40x) | 32 sec |
| Sustained throughput (15mm x 15mm area at 40x) | 81 slides/hr |
| Automated Image Quality Check | Yes |
| Slide sizes accepted | 1x3 |
| Field of View (FOV) | 1mm |
| Bar code engines | 1D and 2D symbology |
| Dimension | 20.8" (52.83 cm) W x 23" (58.43 cm) L x 19.5" (49.53 cm) H |
| Weight | 140 lbs (63.5 kg) |

*Parts shown are each sold separately.

| Part Number | Description |
|------------------|--|
| 23GT450 | Aperio GT 450 Scanner |
| 23GT450SAM | Aperio GT450 Scanner Admin Manager (SAM) Server |
| 23GT450SAMSW | Aperio GT450 Scanner Admin Manager (SAM) Applications Software |
| 23Dell740XD21TB | Dell 740 XD image storage DSR 21 Terabytes |
| 23Dell740XD42TB | Dell 740 XD image storage DSR 42 Terabytes |
| 23Dell740XD85TB | Dell 740 XD image storage DSR 85 Terabytes |
| 23Dell740XD138TB | Dell 740 XD image storage DSR 138 Terabytes |
| 23VS100 | Aperio viewing station (includes calibrated monitor, workstation, Aperio ImageScope viewer and optimized ICC file) |

For research use only. Not for use in diagnostic procedures.

Copyright © 2019 Leica Biosystems Imaging, Inc. All Rights Reserved. LEICA and the Leica logo are registered trademarks of Leica Microsystems IR GmbH. Aperio is a registered trademark of Leica Biosystems Imaging, Inc. in the USA and optionally in other countries. GT and GT 450 are trademarks of Leica Biosystems Imaging, Inc. in the USA and optionally in other countries. Other logos, product and/or company names might be trademarks of their respective owners.

190560 Rev A - IMC-1198-REV-A 08/2019

Learn more at: [LeicaBiosystems.com/AperioGT450](https://www.LeicaBiosystems.com/AperioGT450)