

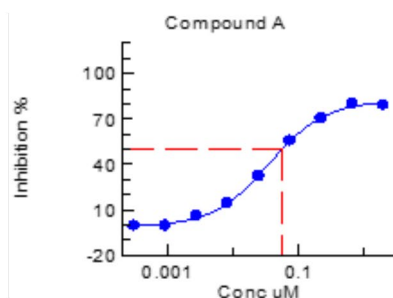
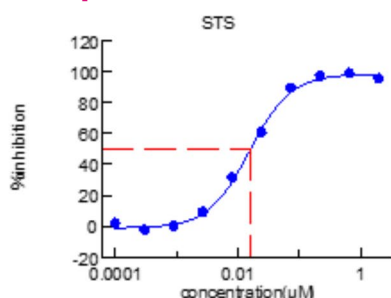
CANCER CELL LINE PANEL SCREENING

Leading Cell-Based Assay Service

With over 800 cancer cell lines in house, ChemPartner covers all the major cancer types and includes cell lines from commercial sources such as ATCC, ECACC, DSMZ, RIKEN, JCRB, as well as our proprietary PDX-derived primary cancer cell lines.

All the cell lines have been tested to be mycoplasma free, and >90% of the cell lines have been through thorough characterization including determination of cell doubling time, seeding densities, and reference compound testing. Cancer cell line anti-proliferation panel screening is routinely carried out by a dedicated team in our 800 m² cell culture facility well equipped with state-of-the-art instrumentation.

Example Data



Testing Conditions

- Plate Formats:
 - 96-well plate
 - 384-well plate
- Assay Formats:
 - Cell Titer Glo
 - Cyquant
 - 3D Growth Assays
- Number of Doses per Compound:
 - 9-10 doses IC50 format
 - Single Dose
 - Double Doses
- Number of Replicates:
 - Triplicates
 - Duplicates
 - Singleton
- Time of Compound Treatment:
 - 72 hours
 - 2 Cell Doubling Time
 - Other client preferred duration

Deliverables

- Documented methods and testing conditions
- Quality Control Statement (Z', SW, CV%, Reference Compound Data)
- Experimental Results (% Inhibition, Curve Fitting and Compound IC50s by XLfit or GraphPad Prism if applicable)

Sample Submission

- Testing compounds can be submitted as dry powder or in DMSO stock. 2-5 mg per compound is adequate for most of the panel screenings.

Related Services

- Combination Studies
- Target Engagement Assays
- Cell Apoptosis Assay, Cell Cycle Analysis, Protein Phosphorylation
- Xenograft Models

| Cell Line Tissue Origin | Number of Cell Lines | Source | Assay Format | Timeline (For <40 Cell Lines) |
|-------------------------|----------------------|---|---------------------------------|-------------------------------|
| Lung Cancer | 156 | ATCC, ECACC, CLS, RIKEN, JCRB, KCLB, SIBS | 96-well plate 84-well plate | 2-4 weeks |
| Leukemia | 54 | ATCC, ECACC, DSMZ, RIKEN, JCRB, KCLB, SIBS | 96-well plate 384-well plate | 2-4 weeks |
| Brain Cancer | 57 | ATCC, ECACC, CLS, RIKEN, JCRB, KCLB, SIBS | 96-well plate 84-well plate | 2-4 weeks |
| Breast Cancer | 42 | ATCC, CLS, SIBS | 96-well plate 384-well plate | 2-4 weeks |
| Lymphoma | 47 | ATCC, DSMZ, JCRB | 96-well plate 384-well plate | 2-4 weeks |
| Liver Cancer | 49 | ATCC, JCRB, KCLB, SIBS, ChemPartner | 96-well plate 384-well plate | 2-4 weeks |
| Colon Cancer | 38 | ATCC, ECACC, SIBS | 96-well plate 384-well plate | 2-4 weeks |
| Melanoma | 33 | ATCC, ECACC, CLS, RIKEN, JCRB | 96-well plate 384-well plate | 2-4 weeks |
| Pancreatic Cancer | 43 | ATCC, ECACC, RIKEN, JCRB, ChemPartner | 96-well plate 384-well plate | 2-4 weeks |
| Ovarian Cancer | 31 | ATCC, ECACC, JCRB, KCLB, SIBS | 96-well plate 384-well plate | 2-4 weeks |
| Esophagus Cancer | 25 | ECACC, DSMZ, CLS, RIKEN, JCRB, SIBS | 96-well plate 384-well plate | 2-4 weeks |
| Kidney Cancer | 25 | ATCC, RIKEN, JCRB, SIBS | 96-well plate 384-well plate | 2-4 weeks |
| Gastric Cancer | 35 | ATCC, JCRB, RIKEN, SIBS | 96-well plate 384-well plate | 2-4 weeks |
| Bone Cancer | 19 | ATCC, ECACC, CLS, JCRB | 96-well plate 384-well plate | 2-4 weeks |
| Bladder Cancer | 14 | ATCC, ECACC, CLS | 96-well plate 384-well plate | 2-4 weeks |
| Tongue Cancer | 12 | ATCC, ECACC, JCRB, KCLB | 96-well plate 384-well plate | 2-4 weeks |
| Myeloma | 13 | ATCC, DSMZ | 96-well plate 384-well plate | 2-4 weeks |
| Prostate Cancer | 7 | ATCC, SIBS | 96-well plate 384-well plate | 2-4 weeks |
| Mesothelioma | 21 | ECACC, RIKEN, SIBS | 96-well plate 384-well plate | 2-4 weeks |
| Others | 72 | ATCC, ECACC, DSMZ, CLS, RIKEN, JCRB, KCLB, SIBS | 96-well plate 384-well plate | 2-4 weeks |