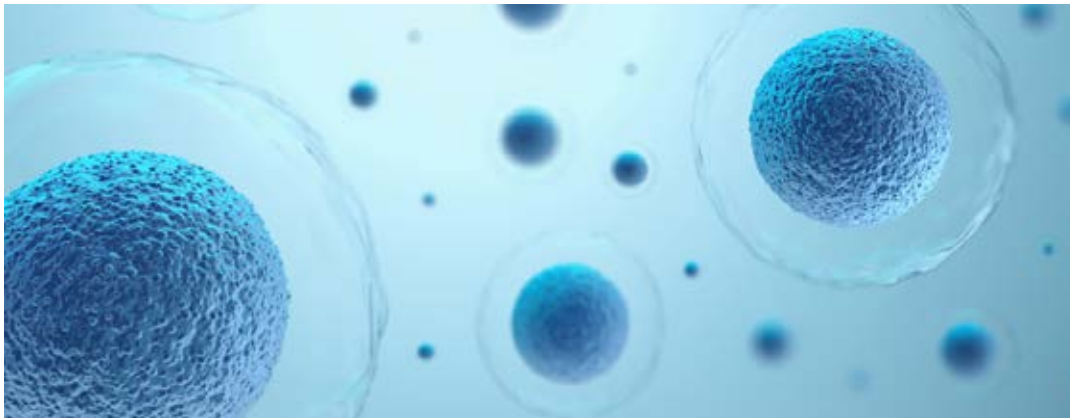




MOVING **SCIENCE** FORWARD

## Case **Study**

Delivering **personalized supply chains**  
for autologous cell therapies



### **Customer**

A clinical-stage biopharmaceutical company

### **Challenge**

To develop an end-to-end logistics solution  
for an autologous study

### **Solution**

Next Flight Out service with complete chain  
of custody and identity

### **Locations**

USA and Europe

Life Science shipments contain high-value active ingredients, meaning that short shelf life and strict temperature requirements present daily challenges for logistics companies.

Learn how Biocair is **moving science forward.**



[www.biocair.com](http://www.biocair.com)



[enquiries@biocair.com](mailto:enquiries@biocair.com)



**Cell and gene therapies have the power to revolutionize treatment for many diseases. These advanced therapies are fragile, highly sensitive to the environment and are personalized to the individual.**

The ability to overcome these complex challenges is critical when managing cell and gene therapy supply chains.

Personalized medicine requires personalized transportation - an approach to logistics as revolutionary as the therapies it delivers.

The customer, based in the United States, develops cell therapy platforms for a variety of solid tumors. Biocair was contacted to collect and transport the cells to the manufacturing site in Europe, and then ship them back to the patients.

## Challenges

### Ensuring chain of identity and custody for a cell therapy supply chain

Given that cell and gene therapies are living drug products with complex demands, including short life spans and narrow treatment parameters, it was essential to provide real-time information regarding a shipment's location and condition, helping to ensure safe delivery of these critical materials.

### The need for contingency planning throughout

Delivering cells successfully can often be a complex, multi-step process. This particular application included a number of manufacturing and patient sites across a variety of locations globally.

Due to the complex nature of this study, and uncontrollable incidents that may arise such as the reduced flight options and changing flight schedules caused by the ongoing COVID-19 pandemic, Biocair's logistics experts had to mitigate potential issues, devising and monitoring alternate supply routes in advance of transportation.



## Solution

### Utilizing the latest temperature-controlled packaging and monitoring technologies

Taking into account the requirement to monitor location and condition in real-time, Biocair provided liquid nitrogen dewars with remote condition monitoring and GPS positioning. These state of the art dewars form a network of strategically located liquid nitrogen facilities worldwide.

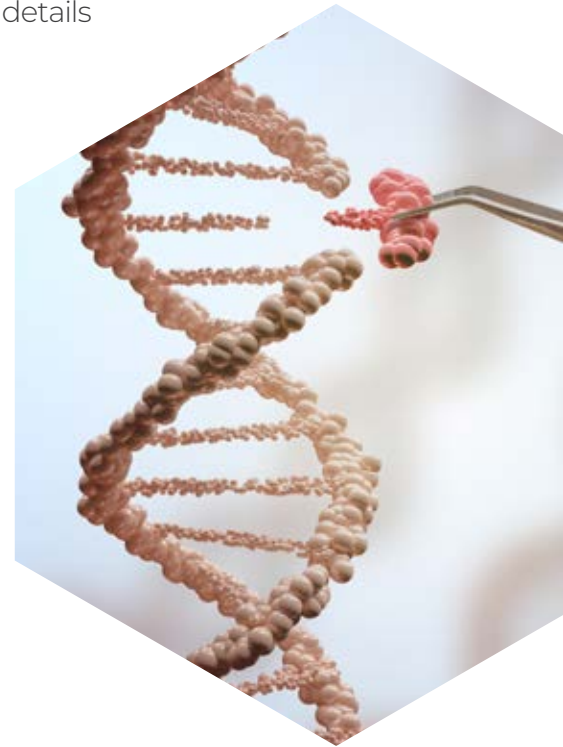
## Implementing a chain of custody and identity

Biocair managed chain of custody for each shipment, ensuring details such as the name of the driver, collection date and subsequent handovers were recorded throughout the study.

## 24/7 support and project management by a team of industry experts

Biocair's team of cell and gene therapy logistics experts provided around the clock support to the customer. During set up the team also arranged for on-site demonstrations and training, ensuring that each site was familiar in the handling of the study procedures, packaging and requirements.

The team then monitored every shipment - checking location, orientation and temperature - and liaised with Biocair's drivers for real-time updates on progress to ensure absolute peace of mind of location and condition, guaranteeing the safe delivery of life-saving materials.



*To maximize our ability to address the challenges surrounding the shipment of cells, we are working with Biocair as our shipping logistics and chain of custody partner.*

*Biocair has reliably delivered these living products without diminishing their quality. We have benefited from the real-time tracking of shipments that Biocair provides."*

**A customer spokesperson**

## Summary

By implementing a collaborative approach working directly with key stakeholders, Biocair's dedicated team of experts designed a personalized supply chain to support the development of the client's innovative cell and gene therapies.

Personalized service is vital when transporting samples that are irreplaceable, invaluable and unique to that individual.

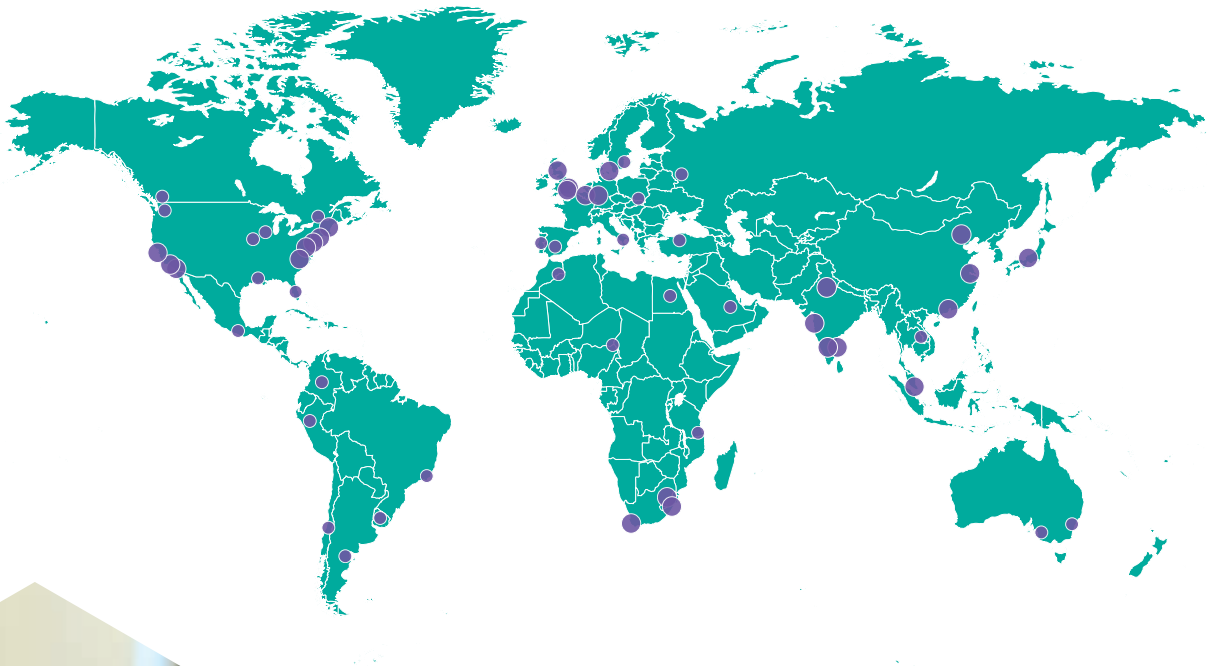
Do you need support with your cell therapy supply chain? Find out how Biocair can help.



MOVING **SCIENCE** FORWARD

## About **Biocair**

Since 1987 Biocair has built up a unique, client-centric approach by employing scientists in front-line logistics positions and assembling a team of best-in-class industry experts in quality, cold chain and regulatory compliance amongst others. Biocair focuses on providing the most comprehensive service options available whilst delivering flexible, tailored, cost effective logistics solutions to all clients.



For a full list of global offices, visit  
**[www.biocair.com](http://www.biocair.com)**

Contact your local Biocair representative  
to discuss how we can support your  
bioscience logistics



[www.biocair.com](http://www.biocair.com)



[enquiries@biocair.com](mailto:enquiries@biocair.com)

