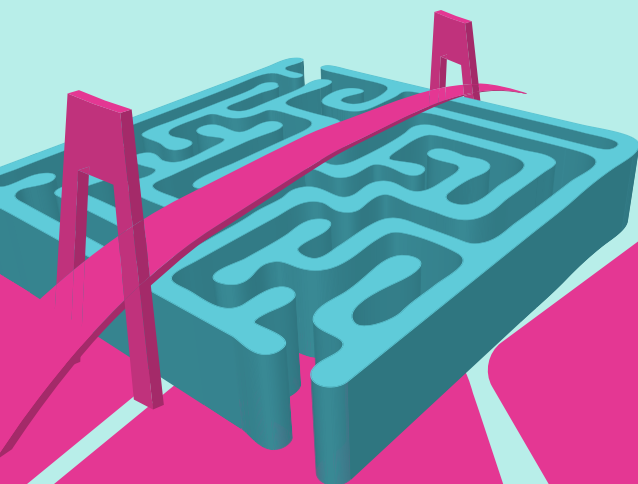
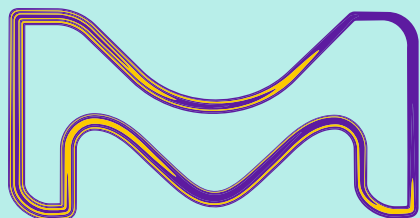


Pharma Raw and Starting Materials

# Satisfy your regulatory requirements

Transparency and comprehensive documentation with the Emprove<sup>®</sup> Program



The life science business of Merck operates as MilliporeSigma in the U.S. and Canada.

**SAFC**<sup>®</sup>

Pharma & Biopharma Raw Material Solutions

## The Emprove® Program

**Confidently speed your way  
through the regulatory maze  
and fast track your new drug  
to market**

### **The Emprove® Program – more documentation, less struggle**

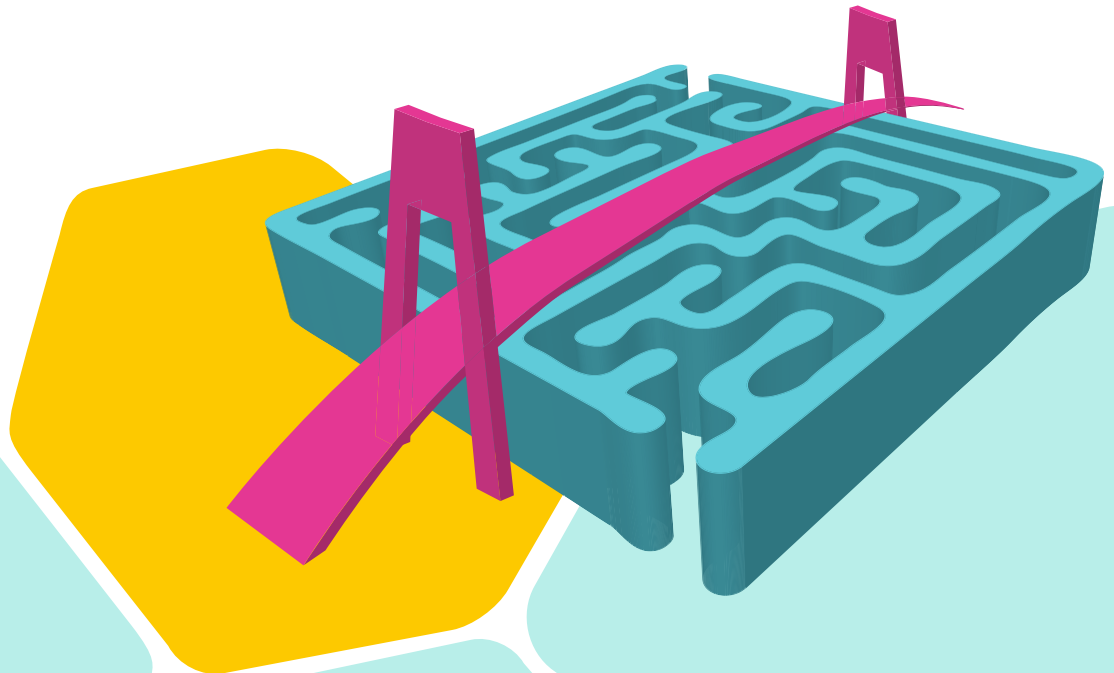
The Emprove® Program supports your risk assessment and management efforts with online access to regulatory information and comprehensive documentation.

With the Emprove® Program, full supply chain transparency is available at your fingertips.

Our Emprove® Dossiers help you to simplify your qualification, risk assessment and process optimization.

Our Emprove® Program enables you to reduce time, effort and utilize your resources optimally by providing:

- Full supply chain transparency
- Support of risk assessment and management
- Online access to regulatory information
- Comprehensive up-to-date documentation



## How does it work?

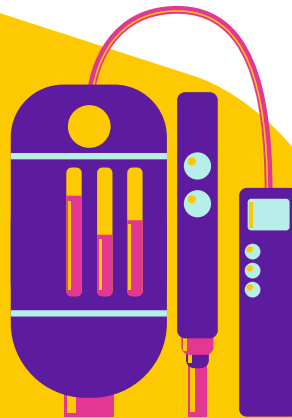
### Qualification, risk assessment and process optimization

The Emprove® Program contains over 400 raw and starting materials, 30 filter and single-use product families, as well as selected chromatography resins and cell culture media. Each product portfolio is supported with Emprove® Dossiers which provide comprehensive, up-to-date documentation to help you navigate regulatory challenges, manage risks, and improve your manufacturing processes.

### Emprove® Portfolio



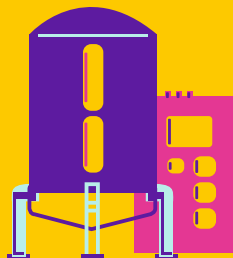
● **Filtration and Single-Use Components**



● **Chromatography Resins in Biomanufacturing Processes**



● **Pharma Raw and Starting Materials**



● **Cell Culture Media in Upstream Processes**

### Emprove® Dossiers



Material Qualification



Quality Management



Operational Excellence

- Millipore® products
- SAFCE® products/services

## Four categories addressing different risk levels

### Emprove® Evolve

#### For early stages of biopharmaceutical manufacturing

- Fills the gap between lab-grade and GMP compliant **process raw materials**
- **Quality and supply chain documentation** to support risk assessments for non-GMP process chemicals

### Emprove® Essential

#### Moderate risk applications

- Compliance to **IPEC-PQG GMP** and EXCiPACT™ Quality Standards
- Supply chain transparency & regulatory support to assist product **qualification** and formalized **risk assessments**

### Emprove® API

#### Support drug product development with ICH standard

- Manufactured according to **ICH Q7 GMP**
- Comprehensive information to support customers for drug development

### Emprove® Expert

#### High risk applications

- **IPEC-PQG GMP** compliance and supporting documentation like Emprove® Essential
- **Lowest microbial and endotoxin levels** for high-risk applications



### The Emprove® Chemicals Portfolio

Our Emprove® Chemicals portfolio contains over 400 pharmaceutical raw and starting materials. To address different levels of risk, and to simplify and streamline the selection process, the portfolio is divided into four categories.

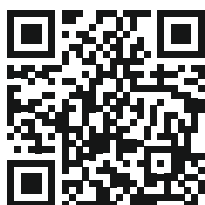
## Emprove® Dossiers

**The documentation you need to speed your way through the regulatory maze**

As part of the Emprove® Program, the complete Emprove® Evolve, Essential, and Expert chemicals portfolio is supported by three Emprove® Dossiers.

The Emprove® API products come with an Emprove® API Information Package, which includes information on the fundamental properties of these products as well as compliance statements.

**More information on the website:  
[MerckMillipore.com/emprove](http://MerckMillipore.com/emprove)**



## Emprove® Suite

**Unlock 24/7 online access to all Emprove® Dossiers**

Getting the relevant information is now more convenient than ever with the Emprove® Suite.

The Emprove® Suite offers:

- 24/7 online access to all dossiers of the entire Emprove® portfolio
- Subscriptions available for 1, 2 or 5 years
- Current and up-to-date information optimized for easy and targeted search
- Dossier updates notifications

For more information, our terms and conditions as well as the subscription form, please visit:

**[MerckMillipore.com/emprovesuite](http://MerckMillipore.com/emprovesuite)**

**Click. Explore.  
Learn more.**

Find out more on:

**[MerckMillipore.com/emprove](https://www.MerckMillipore.com/emprove)**

Gain 24/7 online access  
to all your dossiers with  
our Emprove® Suite at:

**[MerckMillipore.com/emprovesuite](https://www.MerckMillipore.com/emprovesuite)**



We provide information and advice to our customers on application technologies and regulatory matters to the best of our knowledge and ability, but without obligation or liability. Existing laws and regulations are to be observed in all cases by our customers. This also applies in respect to any rights of third parties. Our information and advice do not relieve our customers of their own responsibility for checking the suitability of our products for the envisaged purpose.

For additional information, please visit **[MerckMillipore.com](https://www.MerckMillipore.com)**  
To place an order or receive technical assistance, please visit **[MerckMillipore.com/contactPS](https://www.MerckMillipore.com/contactPS)**

