





# Galactic Data

A Galactic AI™ product

**We believe that to develop the innovations of the future successfully we must fully understand today's data.**

To quickly develop a successful new drug, it's vital to understand today's scientific evidence and how it is connected to avoid repeating past failures and draw the insights that matter. Galactic Data, a Galactic AI™ solution, auto-curates high value biological systems data as it is released to bring you:

 <p>Auto-curated causal data from the literature, present in no other database</p>	 <p>Around 41Mn cause-and-effect interactions across proteins, chemicals, cells, phenotypes and more</p>	 <p>Around 1.7Bn context data-points for flexible disease modelling</p>	 <p>Powerful graph orientated analyses that fit with your own data</p>
-----------------------------------------------------------------------------------------------------------------------------------------------------------------------	---------------------------------------------------------------------------------------------------------------------------------------------------------------------------------------------	--------------------------------------------------------------------------------------------------------------------------------------------------------------	-------------------------------------------------------------------------------------------------------------------------------------------------------------

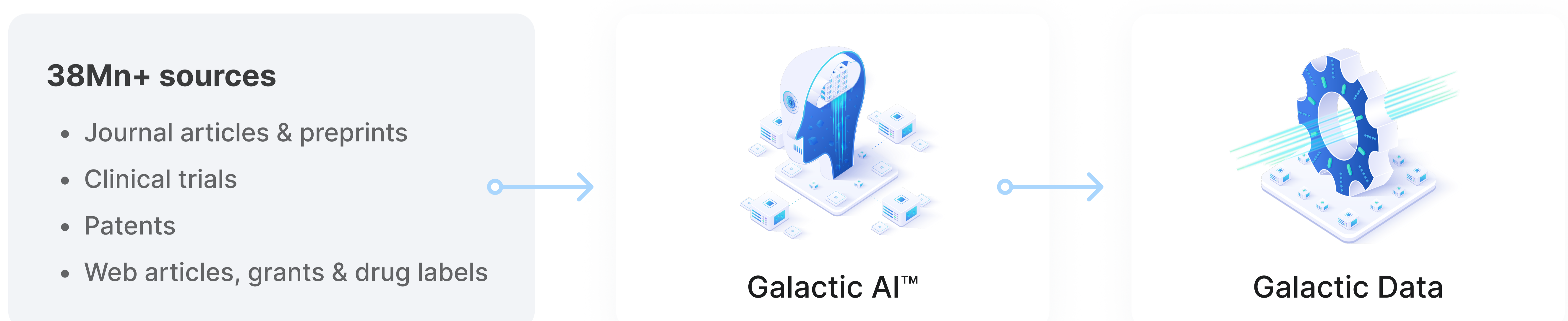
**Accelerate your research and development with the most comprehensive and up-to-date Galactic Data.**

Directional, contextual cause and effect data, between many concept types

- Phenotype
- Drug
- Protein
- Chemical
- Biological process
- Viral protein
- Other gene
- Disease
- Cell
- Pathway
- Non-coding RNA
- Complex
- Gene family
- Gene variant

**Turn a \$20Bn challenge into a 6-hour processing job**

Galactic AI™ auto-curates data from sources daily as they are released.



Software updates, new ontologies and expanded data schemas are regularly pushed across all sources ensuring there's minimal delay in exploring data present in no other database.

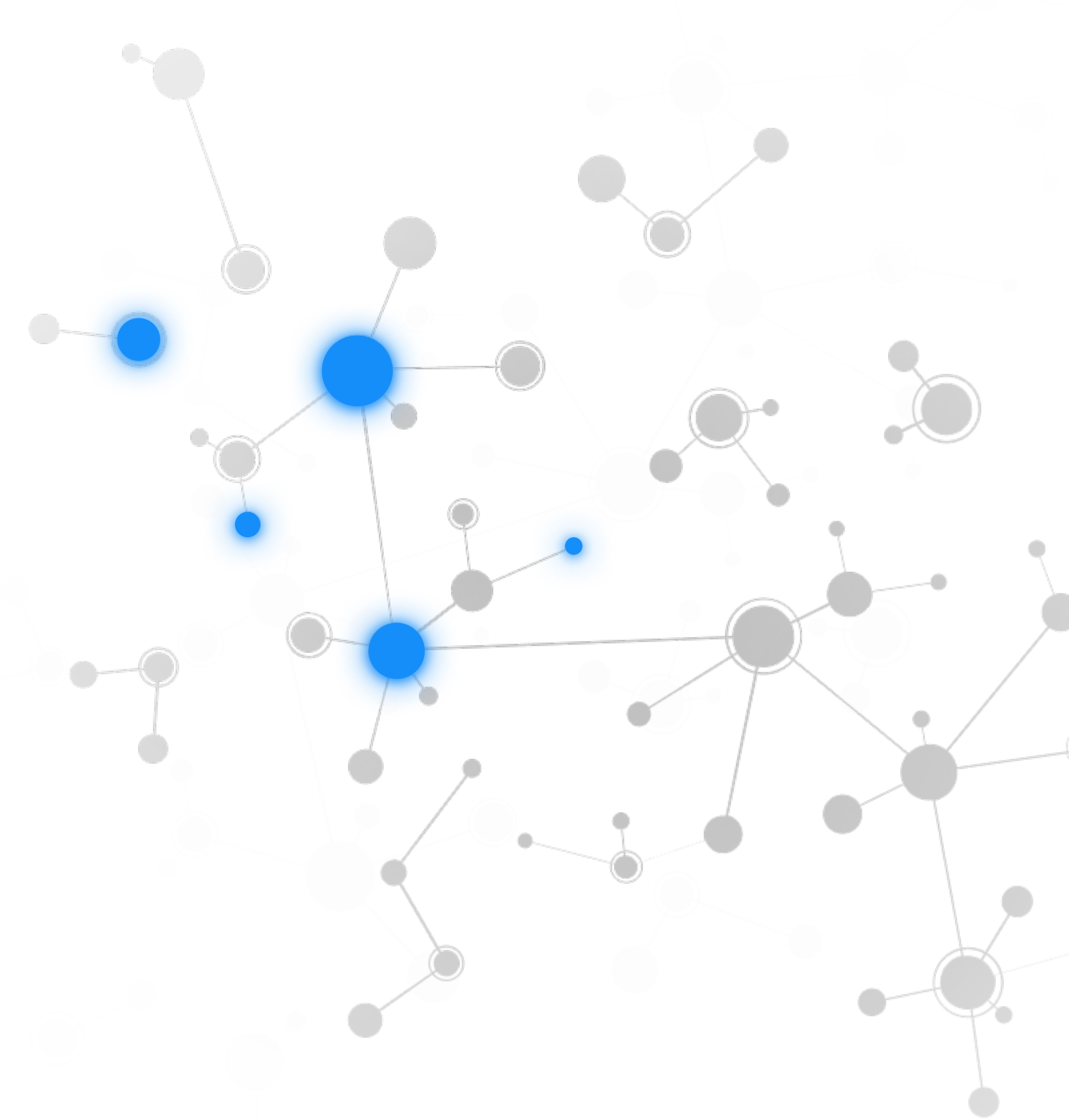
## Auto-context allows flexible knowledge graph building

Spin up knowledge graphs instantly and use powerful analyses to explore targets, disease mechanisms, biomarkers & more.

Q Lung cancer + Fibroblasts

Apply these insights to any therapy area, including

- Oncology
- Immunology
- Cardiovascular
- CNS
- Respiratory



*“The contextual data from Biorelate is critical to our efforts to embed knowledge graphs into the drug discovery pipeline”*

Dr. Ben Sidders  
Director, Oncology Bioinformatics



*“The partnership puts us at the cutting edge of AI research and application.”*

Dr. Jonny Wray  
Chief Technology officer

## Work with us in the way that suits you day-to-day

Giving you access to data, the moment it is released, in the way you want it

### Galactic Web

Quickly browse and explore causal data in the intuitive Galactic Web app. Use powerful deep search technology, insightful analyses and time-saving workflows as part of your day-to-day.

### Galactic Data

Give your data science team direct access to all the causal data captured by Galactic AI™. Instantly spin up knowledge graphs using the billions of contextual data-points related to each causal interaction.

### Professional services

Combine the power of Galactic AI with the expertise of the Biorelate professional services team to answer your specific research questions.

## Accelerate your research intelligence

Contact a Biorelate representative to find out how we can bring live curated data and the most up-to-date insights to your organisation now.

For info on all our products & services (including the new Galactic API and the upcoming Galactic Platform) visit [www.biorelate.com](http://www.biorelate.com)

Or email us directly at [info@biorelate.com](mailto:info@biorelate.com)