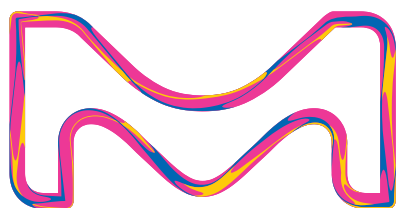


Analyte Quarterly

Vol. 1 2023

Explore multiplex and singleplex biomarker detection assays, platforms, software, and services

- Single Molecule Counting (SMC®) High Sensitivity Assays
- MILLIPLEX® Multiplex Assays
- ELISAs & RIAs
- Belysa® Immunoassay Software
- Custom Assay Development



The Life Science business of Merck operates as MilliporeSigma in the U.S. and Canada.

Millipore®

Preparation, Separation,
Filtration & Monitoring Products

We Strive for the Ideal Immunoassay

Researchers rely on commercial immunoassays to study biomarker expression in a wide variety of research applications. With recent technological advances pushing the limits of protein quantification in sensitivity and multiplex analyte detection, we are committed to delivering the best possible immunoassays for your research needs. Whether you are using our industry-leading MILLIPLEX® multiplex panels to broadly survey multiple analytes, performing femtogram/mL biomarker analysis using the Single Molecule Counting (SMC®) ultrasensitive immunoassay platform, or examining single proteins with our tried-and-true ELISAs and RIAs, you can confidently expect reliable measurements, a simplified user experience, and knowledgeable scientific partners to help drive your biomarker project from hypothesis to publication.

Advantages of Our Platforms

Published Performance

- Broadest analyte selection across research areas and species
- Over 15,000 published papers with data generated using our immunoassays
- Customizable, premixed, and bulk kit options to fit your exact research needs

Quality

- Over four decades of immunoassay development and manufacturing expertise
- Assays developed and quality tested for accurate, reproducible, and biologically relevant protein measurements
- Manufactured in facilities which are ISO 9001:2015 compliant, our products are for research use only (RUO) and not for use in clinical or for medical diagnostic purposes

User Experience

- Kit components pre-optimized for easy use and minimal preparation steps
- Comprehensive protocols with recommendations for optimal sample preparation
- Knowledgeable in-house and field-based scientific support for assays and instruments
- State-of-the-art Belysa® software for powerful immunoassay data analysis and reporting

Complete Immunoassay Testing Platforms



	MILLIPLEX® Panels	SMC® Platform	ELISAs and RIAs
	Accurately measure up to 48 proteins in a sample	Explore previously undetectable proteins	Trusted standards for protein quantitation
Single/Multiplex	Multiplex	Singleplex	Singleplex
Sensitivity	Down to pg/mL	Down to fg/mL	Down to pg/mL
Sample Size	~25 µL (may be diluted)	5-100 µL	50-100 µL
Dynamic Range	3-5.5 log	4-5 log	2-3 log
Assay	MILLIPLEX® assay or any Luminex® assay	SMC® assay	Any ELISA (such as Conferma® ELISAs) or RIA
Instrument	Luminex®: xMAP®, INTELLIFLEX®, FLEXMAP 3D®, Luminex® 200™ Systems	SMCxPRO® System	Any ELISA reader, or gamma counter (for RIA)
Automation	Yes	Yes	No

New Immunoassay Products

NEW Kits

Description	Species	Cat. No.
MILLIPLEX® Panels		
Cytokine Autoantibody Expanded IgG Panel	Human	HCYTABG-17K
Cytokine Autoantibody IgA Panel	Human	HCYTABA-17K
Cytokine Autoantibody IgM Panel	Human	HCYTABM-17K
Cytokine/Chemokine/Growth Factor Panel B	Human	HCYTB-60K
Interferon Panel	Human	HIFN-130K
Metabolic Hormone Expanded Panel	Rat	RMHE-120K
SMC® Kits		
NF-L High Sensitivity Immunoassay Kit	Human	03-0202-00
Conferma® ELISA Kits		
IL-6 ELISA	Human	EZIL6-98K
IL-8 ELISA	Human	EZHIL8-100K
MCP-1 ELISA	Human	EZMCP1-99KRM
TNF- α ELISA	Human	EZHTNFA-150K

Coming Soon

Description	Species	Cat. No.
SMC® Kits		
PD-1 High Sensitivity Immunoassay Kit	Human	Coming Soon!
PD-L1 High Sensitivity Immunoassay Kit	Human	Coming Soon!

Introducing our SMC® Human NF-L High Sensitivity Immunoassay Kit

Reduce reliance on CSF samples and use noninvasive serum and plasma samples to measure low-abundant NF-L, one of the most highly studied neuroscience biomarkers in research today. Discover more at SigmaAldrich.com/smc-neuro

MILLIPLEX® Multiplex Immunoassays

SMCxPRO® Platform

Conferma® ELISAs

Belysa® Curve Fitting Software supports all 3 platforms

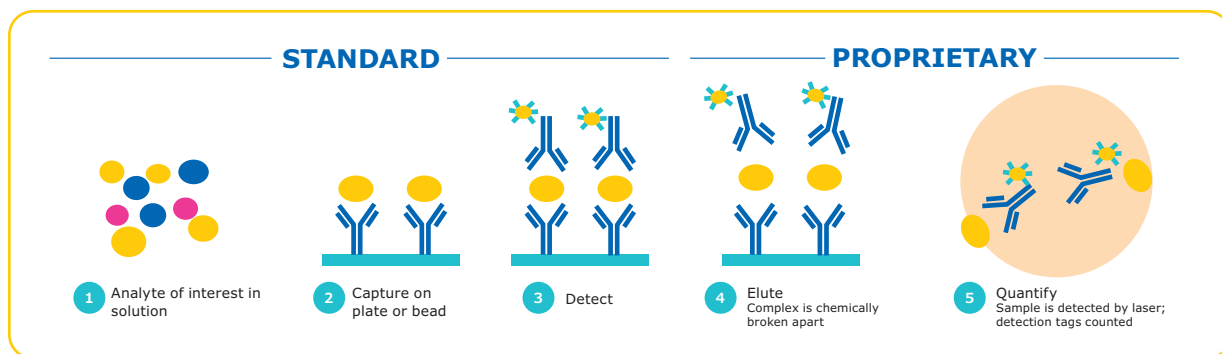
Low-Abundant Target Biomarker

Targeted Biomarker

Single Molecule Counting (SMC[®]) Technology

Reduced background + increased signal

SMC[®] technology provides maximum immunoassay performance while following a workflow similar to traditional ELISA technology, as shown below. By combining a unique assay elution step and robust digital counting, SMC[®] technology achieves improved signal-to-noise ratios over traditional immunoassay technologies. The SMC[®] technology thus provides enhanced quantification at both low and high levels of expression on one complete system.



Steps 2-3

Antibodies translate each biomarker into a signal

Step 4

Fluorescent dye-labeled detection antibodies dissociate from the immunocomplex

Step 5

On the SMCxPRO[®] instrument, signal is collected from free-floating fluorochromes using a rotating laser, camera, and counting individual molecules by an Avalanche Photodiode

Digital counting improves sensitivity and dynamic range

The SMCxPRO[®] instrument captures the sum of all digital events counted above the background threshold. The algorithm of the SMCxPRO[®] instrument computes digital events across a spectrum of time series for a single standard. The digital counting of molecules thus improves the assay sensitivity and extends the assay dynamic range beyond what can be achieved with traditional methods.

What Is Single Molecule Counting (SMC[®]) Technology?

Satisfy your curiosity by visiting SigmaAldrich.com/smc-learn

SMC[®] Immunoassay Kits

Product Description	Cat. No.	LLOQ (pg/mL) ¹	Species ²	Sample Type ³
Immunology/Inflammation				
IFN-α2	03-0186-00	0.062	H	P,S
IFN-β1	03-0191-00	0.15	H	P,S
IFN-γ	03-0181-00	0.03	H	P,S
IL-1α2	03-0167-00	0.12	H	P,S
IL-1β	03-0160-00	0.20	H	P,S
IL-2	03-0195-00	0.09	H	P,S
IL-22	03-0162-00	0.10	H	P,S
IL-23	03-0157-00	0.10	H	P,S
IL-4	03-0161-00	0.04	H	P,S
IL-5	03-0168-00	0.04	H	P,S
IL-6	03-0155-00	0.08	H	P,S
IL-10	03-0176-00	0.10	H	P,S
IL-12p70	03-0182-00	0.05	H	P,S
IL-13	03-0156-00	0.04	H	P,S
IL-17A/F Heterodimer	03-0177-00	2.34	H	P,S
IL-17A	03-0159-00	0.07	H	P,S
IL-17F	03-0164-00	0.20	H	P,S
IL-18	03-0190-00	0.09	H	P,S
MCP-1	03-0187-00	0.15	H	P,S
TNFα	03-0163-00	0.20	H	P,S
VEGF-A	03-0180-00	0.20	H	P,S
Neuroscience				
Phospho-α-Synuclein(Ser129)	03-0188-00	0.1	H	P,S,C
Total-α-Synuclein	03-0196-00	1.95	H	P,S,C
Amyloid beta 1-40	03-0145-00	5.86	H,M,R	P,C
Amyloid beta 1-42	03-0146-00	0.98	H,M,R	P,C
BDNF	03-0171-00	0.04	H	P,S,C
GFAP	03-0203-00	0.12	H	P,S,C
NF-L NEW	03-0202-00	0.87	H	P,S,C
NPTX2	03-0199-00	0.58	H	P,S,C
SNAP-25	03-0206-00	0.26	H	P,S,C
TDP-43	03-0205-00	5.21	H	P,S,C
Phospho-Tau(Thr181)	03-0184-00	0.94	H	P,S,C
Total Tau	03-0185-00	2.34	H	P,S,C
UCHL1	03-0183-00	2.60	H	P,S,C
Cardiovascular				
cTnI	03-0154-00	0.69	H,Cy,R,C,GP	P,S
Metabolism/Endocrinology				
Glucagon	03-0153-00	0.78	H,M,R	P
Immunogenicity				
IgE ⁴	03-0201-00	31.00	H	P,S
IgM ⁴	03-0204-00	206.00	H	P,S
Virology				
SARS-CoV-2 RBD IgG ⁵	03-0193-00	NA ⁵	H	P,S
SARS-CoV-2 S1 IgA ⁵	03-0197-00	NA ⁵	H	P,S

¹ LLOQ: Lowest point on standard curve with CV < 20% and accuracy within 20% of expected values

² Optimized for first species type listed. Other listed species have been tested, but not optimized for peak performance.
Key: H=Human; M=Mouse; R=Rat; GP=Guinea Pig; Cy=Cynomolgus Monkey; C=Canine

³ Optimized for use in sample type(s) listed. Key: P=Plasma; S=Serum; L=Lysate; U=Urine; C=Cerebrospinal Fluid (CSF)

⁴ Plate-based assay

⁵ Qualitative assay

Empower Your Biomarker Research

Ultrasensitive Detection with the SMCxPRO® Immunoassay System

- Ultrasensitive detection down to femtogram/mL
- Lightweight (22.7 kg/50 lbs), fluidics-free benchtop instrument
- Results in hours (average assay time of ~4.5 hours and read time ~45 min)
- More than 40 SMC® assays available from a growing menu
- Bead-based and plate-based assays available
- Custom assay services and sample testing options
- Cat. No. **95-0100-00**



Assay Performance and Instrument Specifications

Dynamic Range	> 4 logs
Precision	< 10% CV (response measurements from 30 fM calibrator, n=20)
Limit of Detection (LOD)	<1 fM
Slope	> 1.2 response/fM (determined from calibrator set: 0-300 fM of 150 kD antibody labeled with fluorophore)
Background	< 3 response/fM (determined from calibrator set: 0-300 fM of 150 kD antibody labeled with fluorophore)
Instrument Footprint	406.4 mm H x 355.6 mm W x 444.5 mm D (16"H x 14"W x 17.5"D)
Read Format	96-well custom plate optimized for SMC® technology
Regulatory Compliance	21 CFR part II and LIMS compatible

Three Levels of Onsite Service Support for SMCxPRO® Platform

- **Total Service:** Unlimited visits including labor, travel, expenses, and all parts for any service for one year
- **Advanced Service:** Labor, travel, and expenses for one preventative maintenance and one floating visit for one year
- **Essential Service:** Labor for one preventative maintenance visit for one year

Supplemental Materials	Cat. No.
384-Well Barcoded SMC® Plate (Case of 32 Plates)	ABB2-10160A
384-Well SMC® Plate (Case of 32 Plates)	ABB2-00160A
One 384-Well SMC® Plate w/ 3 Plate Seals	02-1008-00
SMC® Immunogenicity Bead-Based Assay Development Kit	03-0175-00
SMC® Plate Washer Evaluation Reagent	03-0165-00

MILLIPLEX® Analyte Index

Analyte	Page No.	Analyte	Page No.	Analyte	Page No.
4-6					
4-1BBL/TNFSF9	14,18	BAFF/Blys	11,14	Complement C4	12,15
4E-BP1 (total)	22	BAFF/Blys (autoantibody)	12	Complement C4b	12
4E-BP1 (Thr37/46)	22	BAX (total)	21	Complement C5	12
5'-NT/CD73	14,15,18,19	BCA-1/CXCL13	11,16,18	Complement C5a	12
6Ckine/CCL21/Exodus-2	11,16	Bcl-2 (total)	21	Complement C9	12
		Bcl-2 (Ser70)	21	Complement Factor B	12
A		Bcl-xL (total)	21	Complement Factor H	12,15
α 1-Acid Glycoprotein (AGP)	14,18,19	Bcl-xL/BAD (interaction)	21	Complement Factor I	12
α -1-Antitrypsin (A1AT)	15	BDNF	13,15,17,18	Connective Tissue Growth Factor (CTGF)	19
α -1 Microglobulin	15	Betacellulin	18	Contactin-1	15
α -2 Macroglobulin (A2M)	14,15,18,19	BIM	21	Corticosterone	18
α -Fetoprotein (AFP)	13,14,	Blk (Tyr389)	22	Cortisol	15,20
α -MSH	15,18,19	BMP-9	14	CRAF (Ser338)	22
α -Synuclein	15	BNP	13	Creatine Kinase Muscle (CKM)	18
ACTH	13,14,16,17,18,19,20	BRAF (Ser446)	22	CREB (Ser133)	22,23
Active Caspase 8 (total)	21	BRAK/CXCL14	11	CREB (total)	22,23
Active Caspase 9 (total)	21	BTLA	14,18	CTACK/CCL27	11,13,17
ADAMTS13	13			CTAG1B/NY-ESO-1 (autoantibody)	14
Adiponectin	13,17,18,19	C		CTLA-4/CD152	14,18
Adipsin/Factor D	12,13,14,18	c-Jun (Ser73)	21	CXCL6/GCP-2	11,13
Agouti-Related Protein (AgRP)	13,16	c-Kit (panTyr)	22	CXCL16	11,13,17
ALK-1 (soluble)	18	c-Kit/SCFR (soluble)	15	CYFRA21-1	14
Akt/PKB (Ser473)	21,22,23	c-Met/HGFR (panTyr)	22	Cystatin C	15,18,19,20
Akt/PKB (total)	21,22,23	c-Myc (total)	22		
Akt1 (Ser473)	23	C-Peptide	13,16,20	D	
Akt1 (total)	23	C-Peptide 2	17,18	D-dimer	13
Akt2 (Ser474)	23	C-Reactive Protein (CRP)	14,15,18	DKK1	14,19
Akt2 (total)	23	CA125	14	DPP4	14
Albumin	15,19,20	CA15-3	14		
ALDH1A1	14	CA19-9	14	E	
Amphiregulin	18	Calbindin	15	E-Cadherin	14,18
Amylin (active)	13,16,17,18,20	Carbonic Anhydrase 9 (CA9)	14	EGF	11,14,15,18,19,20
Amylin (total)	13,20	Cardiac Troponin I (cTnI)	13,17,18	EGFR/HER1/ErbB1 (soluble)	12,15
Amyloid beta 1-40 (A β 1-40)	15,18	Cardiac Troponin T (cTnT)	14,17,18	EGFR2/Her2/ErbB2 (soluble)	15
Amyloid beta 1-42 (A β 1-42)	15,18	Cathepsin D	14,15	EGFR3/Her3/ErbB3 (soluble)	15
Angiogenin (ANG)	15	Caveolin-1 (CAV-1)	19	eIF-4B (Ser422)	22
Angiopoietin-2	14,18	CCL28	11	eIF-4E (Ser209)	22
Angiostatin/Kringle	15	CCNB1/Cyclin B1 (autoantibody)	14	eIF-4G (Ser1108)	22
Angiotensinogen (AGT)	15	CD3 ϵ (panTyr)	23	eIF2a (Ser51)	22
ANGPTL3	13	CD14 (soluble)	14	ENA-78/CXCL5	11
ANGPTL4	13	CD19-9	14	Endocan-1 (ESM-1)	13,17
ANGPTL6/AGF	13	CD25/IL-2R α	12,14,17,18	Endoglin	14,18
Apelin	13	CD27	14,18	Endostatin	14
Apolipoprotein AI (Apo AI)	14,15	CD28	14	Endothelin-1	14,18
Apolipoprotein AII (Apo AII)	14	CD30/TNFRSF8 (soluble)	12,14,17	ENO1 (autoantibody)	14
Apolipoprotein B (Apo B)	14	CD31/PECAM-1 (soluble)	14,15,17,18	Eotaxin/CCL11	11,16,18,19,20
Apolipoprotein CII (Apo CII)	14,15	CD40	14,18	Eotaxin-2/CCL24/MIPF-2	11
Apolipoprotein CIII (Apo CIII)	14,15	CD40L (soluble)	11,14,16,17,20	Eotaxin-3/CCL26	11
Apolipoprotein E (Apo E)	14,15	CD44	14	EpCAM	14
ApoE4	15	CD80/B7-1	14,18	Erythropoietin (EPO)	13,16,17,18
APRIL	11,14	CD86/B7-2	14	ErbB1/EGFR (panTyr)	22
Arginase-1 (ARG1)	14,15,19	CD137/4-1BB/TNFRSF9 (soluble)	11,12,14,16,17,18	ErbB2/HER2 (panTyr)	22
ATF2 (Thr71)	21	CD226/DNAM-1	14,18	ErbB3/HER3 (panTyr)	22
ATR (total)	21	CEA	14	ErbB4/HER4 (panTyr)	22
AXL (soluble)	15	CENP-A (autoantibody)	12	Erk/MAPK 1/2 (Thr185/Tyr187)	21,22,23
		CENP-B (autoantibody)	12	Erk/MAPK 1/2 (total)	22,23
B		Chk1 (Ser345)	21	E-Selectin (soluble)	14,15,17,19
β -2-Microglobulin	15,18,19,20	Chk2 (Thr68)	21	Estradiol	20
β -Endorphin	15,18,19	CK-MB	13		
β 2-Glycoprotein (autoantibody)	12	Clusterin	15,18,19,20		
β -Tubulin (total)	23	CNTF	13,16		
B7-H2/ICOSL	14,18	Collagen IV	15		
B7-H3/CD276	14,18	COMP (cartilage oligomeric matrix protein)	12		
B7-H4/VTCN1	14	C1q (autoantibody)	12		
B7-H5/VISTA	14	Complement C1q	12		
B7-H6	14	Complement C2	12		
BAD (total)	21	Complement C3	12,15		
BAD (Ser112)	21	Complement C3b	12		

MILLIPLEX® Analyte Index (continued)

Analyte	Page No.	Analyte	Page No.	Analyte	Page No.
F		HCGβ.....	14	IL-4R (soluble).....	12,17
FABP1.....	13,15	Hck (Tyr411).....	22	IL-5.....	11,12,16,17,18,19,20
FABP3.....	13,15,18	HE4.....	14	IL-6.....	11,12,13,14,16,17,18,19,20
FABP4.....	13	Hepsin.....	14	IL-6 (autoantibody).....	12
FADD (Ser194).....	22	HER2/ErbB2 (autoantibody).....	14	IL-6R (soluble).....	12,17
Fas Ligand (sFasL) (soluble).....	11,12,14,16,17,18	HGF.....	13,14,18	IL-6Ra (soluble).....	15
Fas/TNFRSF6 (soluble).....	11,12,14,17,20	HGFR/c-Met (soluble).....	15	IL-7.....	11,12,16,19,20
Ferritin.....	14,15	HIF-1α (autoantibody).....	14	IL-8/CXCL8.....	11,12,13,14,16,19,20
Fetuin A.....	14,15	HMGB1.....	11	IL-8/CXCL8 (autoantibody).....	12
FGF-1/FGF-acidic.....	14	HSP27 (Ser78).....	21	IL-9.....	11,12,16,20
FGF-2/FGF-basic.....	11,14,16,18,19,20	HSP60 (autoantibody).....	14	IL-10.....	11,12,13,16,17,18,19,20
FGF-19.....	13	HSP70.....	12	IL-10 (autoantibody).....	12
FGF-21.....	13,17,18	Human Serum Albumin (HSA).....	15	IL-11.....	11,16
FGF-23.....	13,14,19	HVEM.....	14	IL-12.....	20
FGFR1 (panTyr).....	22	I		IL-12 (p40).....	11,16,20
FGL1/epassocin.....	14	I-309/CCL1.....	11	IL-12 (p40) (autoantibody).....	12
Fgr (Tyr412).....	22	ICAM-1 (soluble).....	12,13,15,17,19	IL-12 (p70).....	11,12,16,17,18,19,20
Fibrinogen.....	14	ICOS.....	14	IL-12/23 (p40).....	16
Fibroblast Activation Protein (FAP).....	14	IDO1.....	14	IL-13.....	11,12,16,17,18,19,20
Flt3 Ligand.....	11,20	IFNα2.....	11,12,16,19,20	IL-14/α-Taxilin.....	11
Flt3 (panTyr).....	22	IFNα2 (autoantibody).....	12	IL-15.....	11,12,13,16,17,18,19,20
Follistatin (FST).....	14,17,18	IFNβ.....	11,12	IL-15 (autoantibody).....	12
Follistatin-like Protein 1 (FSTL1).....	17,18	IFNβ (autoantibody).....	12	IL-16.....	11,16,19
Fractalkine/CX3CL1.....	11,12,13,16,18,19,20	IFNβ1.....	16	IL-17A/CTLA8.....	11,12,16,17,18,19,20
FSH.....	13,16,17,18,20	IFNγ.....	11,12,16,17,18,19,20	IL-17A/CTLA8 (autoantibody).....	12
Fyn (Tyr420).....	22	IFNγ (autoantibody).....	12	IL-17A/F.....	16
		IFNγ Receptor 1 (IFNGR1).....	12	IL-17E/IL-25.....	11,12,16,17
		IFNε.....	12	IL-17F.....	11,12,17
		IFNω.....	12	IL-17F (autoantibody).....	12
G		IFNω (autoantibody).....	12	IL-18.....	11,13,16,18,19,20
Galectin-1.....	14,18	IgA.....	13,17	IL-18 (autoantibody).....	12
Galectin-1 (GAL1) (autoantibody).....	14	IgE.....	13	IL-18BPα.....	12
Galectin-3.....	14,18	IGF-1.....	13	IL-19.....	11
Galectin-3 (GAL3) (autoantibody).....	14	IGF-2.....	13	IL-20.....	11,16
GAPDH (total).....	23	IGF1R (total).....	21	IL-21.....	11,12,16,17,19
G-CSF.....	11,14,16,18,19,20	IGF1R (panTyr).....	22	IL-22.....	11,12,16,17
G-CSF (autoantibody).....	12	IGF1R (Tyr1135/1136).....	21	IL-22 (autoantibody).....	12
GDF-11.....	13	IGFBP1.....	13	IL-23.....	11,12,16,17
GDF15.....	13,14	IGFBP2.....	13	IL-24.....	11
GDNF.....	15	IGFBP3.....	13,14	IL-27.....	11,12,17
GH.....	13,16,17,18,20	IGF2BP2/IMP2 (autoantibody).....	14	IL-28A/IFNλ2.....	11,12,16
Ghrelin (active).....	13,16,17,18,20	IGFBP3.....	13,14	IL-28B/IFNλ3.....	11,12,17
GIP (total).....	13,16,17,18,20	IGF2BP3/IMP3 (autoantibody).....	14	IL-29/IFNλ1.....	11,12
GITR.....	14,18	IGFBP4.....	13	IL-31.....	11,12,16,17
GITRL.....	14	IGFBP5.....	13	IL-32α.....	11
Glial Fibrillary Acidic Protein (GFAP).....	15	IGFBP6.....	13	IL-33/NF-HEV (mature).....	11,12,16,17
GLP-1 (active).....	13,16,17,18,20	IGFBP7.....	13	IL-34.....	11
GLP-1 (total).....	13,17,18,20	IgG1.....	13,17	IL-35.....	11
Glucagon.....	13,16,17,18,20	IgG2.....	13	IL-36β/IL-1F8.....	11
GM-CSF.....	11,12,16,17,18,19,20	IgG2a.....	17	IL-36Ra/IL-1F5.....	19,20
GnRH.....	13,17	IgG2b.....	17	IL-37/IL-1F7.....	11
GOT1.....	19	IgG3.....	13,17	IL-38/IL-1F10.....	11
GP130 (soluble).....	12,17	IgG4.....	13	Insulin.....	13,14,16,17,18,19,20
Granulysin.....	14	IgM.....	13,17	IP-10/CXCL10.....	11,15,16,18,19,20
Granzyme A.....	11,12,16	IkBa (Ser32).....	22	IR (total).....	21
Granzyme B.....	11,12,14,16,17,18	IKKα/β (Ser177/181).....	22	IR (panTyr).....	22
GROα/CXCL1.....	11,19	IL-1α.....	11,12,16,18,19,20	IR (Tyr1162/1163).....	21
GSK3α (total).....	21	IL-1α (autoantibody).....	12	Irisin.....	13,17,18
GSK3α (Ser21).....	21	IL-1β.....	11,12,13,14,16,17,18,19,20	IRS1 (Ser636).....	21
GSK3β (total).....	21	IL-1RI (soluble).....	12,17	IRS1 (total).....	21
GSK3β (Ser9).....	21	IL-1RII (soluble).....	12,17	I-TAC/CXCL11.....	11,12,16
GSTα.....	15,19	IL-1Ra.....	11,16,20		
		IL-2.....	11,12,16,17,18,19,20	J	
H		IL-2 (autoantibody).....	12	Jag1.....	13,17
H2AX (Ser139).....	21	IL-2Ra (soluble).....	12,14,17,18	JNK/SAPK1 (Thr183/Tyr185).....	21,22,23
Haptoglobin.....	14,18,19	IL-3.....	11,12,16,20	JNK/SAPK1 (total).....	22,23
HB-EGF.....	14	IL-3 (autoantibody).....	12	Jo-1 (autoantibody).....	12
HCC-1/CCL14.....	11	IL-4.....	11,12,16,17,18,19,20		
HCC-4/CCL16.....	11	IL-4 (autoantibody).....	12		

MILLIPLEX® Analyte Index (continued)

Analyte	Page No.	Analyte	Page No.	Analyte	Page No.
K		mTOR (Ser2448)	21,23	Progranulin (pGRN)	14
Kallikrein-6	14,15	mTOR (total)	21,23	PL-12 (Alanyl-tRNA Synthetase) (autoantibody)	12
KC-like Protein	19	Mucin-1 (MUC1) (autoantibody)	14	Placental Growth Factor 2	17,18
KC/GRO/CINC-1/CXCL1	16,18,20	Myeloperoxidase (MPO)	13,14,15	Placental Growth Factor (PIGF)	13,14
KIM-1	15,18,19,20	Myeloperoxidase (MPO) (autoantibody)	12	Platelet Factor 4 (PF4)/CXCL4	14
Ku (autoantibody)	12	Myoglobin	13	PF4 (autoantibody)	12
L		Myosin Light Chain 3 (MYL3)	18	PM/Scl 100 (autoantibody)	12
Lactotransferrin (LTF)	13	Myostatin/GDF8	13,17,18	Progesterone	20
LAG-3	14,18	N		Prolactin	14,17,18,20
LAT (panTyr)	23	NAP-2/CXCL7	11	ProMMP-9	17
Lck (panTyr)	23	NCAM (soluble)	15	Properdin	12
Lck (Tyr394)	22	NCAML1/L1CAM/CD171	14	Proteinase 3 (autoantibody)	12
Leptin	13,14,16,17,18,19,20	Nectin-2	14	PSA (free)	14
Leucine-rich alpha-2-glycoprotein 1 (LRG1)	14	Nectin-4	14	PSA (total)	14
Leukemia Inhibitory Factor (LIF)	11,13,16,17,18	Neurogranin (NRGN)	15	P-Selectin (soluble)	13,17
LH	13,16,17,18,20	Neuron-specific Enolase (NSE)	14,15	PTEN (total)	21
LIGHT	13,17	Neuropilin-1 (soluble)	15	PTEN (Ser380)	21
LIX/CXCL5	16,18	Neurotensin	15,18,19	PTH	14,15,19
L-Selectin (soluble)	14	Neutrophil Elastase-2 (ELA2)	13	PVR/CD155	14
Lymphotactin/XCL1	11	NFκB (total)	22	PYY (total)	13,16,17,18,20
Lyn (Tyr397)	22	NFκB (Ser536)	22	R	
M		NGAL/Lipocalin-2	13,15,18,19,20	RAGE (soluble)	12,15,17
Mannose-Binding Lectin (MBL)	12	NGF	13	RANKL	14
MCAM/MUC18/sCD146	14	Notch1	17	RANTES/CCL5	11,15,16,17,18,19,20
Mcl-1/BIM (interaction)	21	NOXA/Mcl-1 (interaction)	21	Ras (total)	22
Mcl-1 (total)	21	NT-proBNP	13	RasG12D (total)	22
MCP-1/CCL2	11,13,16,17,18,19,20	O		RasG12V (total)	22
MCP-2/CCL8	11	Oncostatin-M (OSM)	13,17	RBP4	15,20
MCP-3/CCL7	11,20	Osteoactivin	15	Renin	15,18
MCP-4/CCL13	11	Osteocalcin (OC)	14	Resistin	13,17
MCP-5/CCL12	16	Osteocin (OSTN)/Musclin	13,17,18	Ribosomal P (autoantibody)	12
M-CSF	11,16,19	Osteonectin/SPARC	13,14,17,18	RNP (autoantibody)	12
M-CSFR (panTyr)	22	Osteopontin (OPN)	14,15,18,19,20	RNP/Sm (autoantibody)	12
MDC/CCL22	11,16	Osteopontin (OPN) (autoantibody)	12	RPS6 (Ser235/Ser236)	21
MDH1	15	Osteoprotegerin (OPG)	14,19	RPS6 (total)	21
MDM2 (total)	21	OX40/CD134	14	S	
MEK1 (Ser222)	21,22	Oxytocin	15,18,19	S100B	15
Melanoma Inhibitory Activity Protein (MIA)	14	P		SARS-CoV-2 N	13
Melatonin	15,18	P16-INK4a (autoantibody)	14	SARS-CoV-2 RBD	13
Mesothelin	14	p21 (total)	21	SARS-CoV-2 Spike S1	13
Mi-2 (autoantibody)	12	p38/SAPK2A/B (Thr180/Tyr182)	21,23	SARS-CoV-2 Spike S2	13
MICA	14	p38/SAPK2A/B (total)	22,23	SCF	11,14,20
MICB	14	p53 (autoantibody)	14	Scl-70 (autoantibody)	12
Midkine	14	p53 (Ser15)	21	Sclerostin (SOST)	14,19
MIF	12,14	p53 (Ser46)	21	SDF-1/CXCL12	11,18,20
MIG/CXCL9	11,16	p70S6 Kinase (total)	21,22	SDH	15,19
MIP-1α/CCL3	11,12,16,18,19,20	p70S6 Kinase (Thr389/412)	21,22	Secretin	13,17,18
MIP-1β/CCL4	11,12,16,17,19,20	PAI-1 (total)	12,13,15,17,18,19	Serum Amyloid A (SAA)	13
MIP-1δ/MIP-5/CCL15	11	Pancreatic Polypeptide (PP)	13,16,17,18,20	Serum Amyloid P (SAP)	14,15,18
MIP-2/CXCL2	16,18	PARK5/Uchl1	15	Sex Hormone Binding Globulin (SHBG)	14
MIP-3α/CCL20	11,12,16,17,19	PARK7/DJ1	15	Siglec-7	14
MIP-3β/CCL19	11,16	PCNA (autoantibody)	12	Siglec-9	14
MIP-4/PARC/CCL18	11,15	PD-1	14,18	Sm (autoantibody)	12
MMP-1	12	PDGF-AA	11,15,20	SMAD2 (Ser465/467)	23
MMP-2	12,17	PDGF-AB/BB	11,15,20	SMAD3 (Ser423/425)	23
MMP-3	12,17	PDGF-BB	20	SMAD4 (total)	23
MMP-7	12	PDGFRα (panTyr)	22	SOX2 (autoantibody)	14
MMP-8	12,17	PDGFRβ (panTyr)	22	Src (Tyr419)	22
MMP-9	12	PD-L1	14,18	SSA/Ro52 (autoantibody)	12
MMP-10	12	PD-L2	14,18	SSA/Ro60 (autoantibody)	12
MMP-12	12,17	PEDF	15	SSB/La (autoantibody)	12
MMP-13	12	Pentraxin-3 (PTX3)	14	STAT1 (Tyr701)	21
MPIF/CCL23	11	Perforin	11,12,14,16	STAT2 (Tyr690)	22
MSK1 (Ser212)	21	Periostin	14	STAT3 (total)	22,23
				STAT3 (Ser727)	22

MILLIPLEX® Analyte Index (continued)

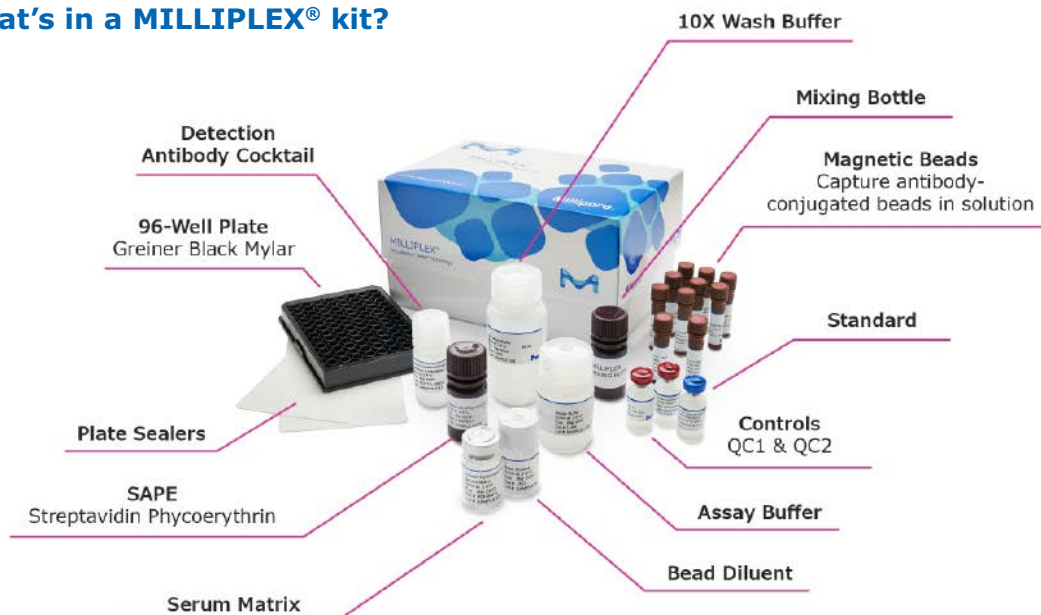
Analyte	Page No.	Analyte	Page No.	Analyte	Page No.
STAT3 (Tyr705).....	22,23	TIE2 (panTyr)	22	U	
STAT5A/B (total).....	22	Tie-2 (soluble)	15	ucMGP	14
STAT5A/B (Tyr694/699).....	22	TIM-3	14,18	uPAR (soluble)/CD87	15
STAT6 (Tyr641).....	22	TIMP-1	12,15,18,19	Uromodulin	15
Substance P	15,18,19	TIMP-2	12	Uteroglobin	12
Superoxide Dismutase 1 (soluble) (sSOD1)	15	TIMP-3	12	V	
Superoxide Dismutase 2 (soluble) (sSOD2)	15	TIMP-4	12	VCAM-1 (soluble)	12,13,15
Survivin/BIRC5 (autoantibody)	14	Tissue Factor (TF).....	14	VEGF	18,19
Syk (panTyr).....	23	TLR-2	14,18	VEGF-A.....	11,14,16,18,19,20
T		TNFR1 (total)	22	VEGF-C.....	14,18
T3	18,20	TNFA	11,12,13,14,16,17,18,19,20	VEGF-D.....	14,18
T4	18,20	TNFα (autoantibody).....	12	VEGFR1/Flt-1 (panTyr)	22
TARC/CCL17	11,16	TNFβ/Lymphotoxin-α (LTA)	11,12,16,17,20	VEGFR1/Flt-1 (soluble).....	12,15,17
Tau (Total)	15	TNF RI (soluble) (sTNFR1)	12,17	VEGFR2/KDR/Flk-1 (panTyr).....	22
Tau (Thr181)	15	TNF RII (soluble) (sTNFR2)	12,17	VEGFR2/KDR/Flk-1 (soluble).....	12,15,17
Testosterone	20	TPO	11	VEGFR3/Flt-4 (panTyr).....	22
TFF-3.....	15,20	TRAIL/TNFSF10	11,14	VEGFR3/Flt-4 (soluble)	12,15,17
TGFα	11,14,16,20	Transglutaminase 2 (TGM2)	14,15	Y	
TGFβ1.....	20	TRAP5	14	Yes (Tyr421)	22
TGFβ2.....	20	TREM2	15	YKL40/CHI3L1	11,14
TGFβ3.....	20	Troponin I (TnI)	13,17,18	Z	
TGFβRII (total)	23	Troponin T (TnT)	14,17,18	ZAP-70 (panTyr).....	23
Thrombomodulin.....	14,17	TSC2 (total)	21		
Thrombospondin-1 (TSP-1)	13	TSC2 (Ser939).....	21		
Thrombospondin-2 (TSP-2)	15	TSH.....	13,16,17,18,20		
TIE1 (panTyr)	22	TSLP.....	11		
		TWEAK	14		

Human pp. 11-15; Non-Human Primate p. 16; Mouse pp. 16-18;
Rat pp. 18-19; Other/Multi-Species pp. 19-20; Cell Signaling kits pp. 21-23

Multiplex Your Research

Explore all the ways researchers are using MILLIPLEX® multiplex assays at SigmaAldrich.com/milliplex-learn

What's in a MILLIPLEX® kit?



HUMAN

Immunology

Human Cytokine/Chemokine/ Growth Factor Panel A

☐ (Cat. No. HCYTA-60K)	
38 (Cat. No. HCYTA-60K-PX38) ♦	
38 (Cat. No. HCYTA-60K-PXBK38) ♦	
48 (Cat. No. HCYTA-60K-PX48)	
48 (Cat. No. HCYTA-60K-PXBK48)	
sCD40L	IL-13 ♦
EGF ♦	IL-15 ♦
Eotaxin/CCL11 ♦	IL-17A/CTLA8 ♦
FGF-2/FGF-basic	IL-17E/IL-25 ♦
Flt3 Ligand	IL-17F ♦
Fractalkine/CX3CL1	IL-18 ♦
G-CSF ♦	IL-22 ♦
GM-CSF ♦	IL-27
GRO α	IP-10/CXCL10 ♦
IFN α 2 ♦	MCP-1/CCL2 ♦
IFN γ ♦	MCP-3/CCL7
IL-1 α ♦	M-CSF ♦
IL-1 β ♦	MDC/CCL22
IL-1RA ♦	MIG/CXCL9 ♦
IL-2 ♦	MIP-1 α /CCL3 ♦
IL-3 ♦	MIP-1 β /CCL4 ♦
IL-4 ♦	PDGF-AA ♦
IL-5 ♦	PDGF-AB/BB ♦
IL-6 ♦	RANTES/CCL5 ♦▲ ^o
IL-7 ♦	TGF α
IL-8/CXCL8 ♦	TNF α ♦
IL-9	TNF β /Lymphotoxin- α (LTA) ♦
IL-10 ♦	VEGF-A ♦
IL-12 (p40) ♦	
IL-12 (p70) ♦	

Human Cytokine/Chemokine/ Growth Factor Panel B **NEW**

☐ (Cat. No. HCYTB-60K)	
38 (Cat. No. HCYTB-60K-PX38) ♦	
38 (Cat. No. HCYTB-60K-PXBK38) ♦	
48 (Cat. No. HCYTB-60K-PX48)	
48 (Cat. No. HCYTB-60K-PXBK48)	
6Ckine/CCL21 ♦	IL-20 ♦
BCA-1/CXCL13 ♦	IL-24
sFAS/TNFRSF6 ♦	IL-28A/IFN λ 2 ♦
sFASL ♦	IL-31 ♦
sCD137/4-1BB/ TNFRSF9 ♦	IL-29/IFN λ 1 ♦
APRIL ♦	IL-33/NF-HEV (mature) ♦
BAFF/Blys ♦	IL-21 ♦
IL-16 ♦	IL-34
CCL28	LIF ♦
CTACK/CCL27 ♦	Lymphotoxin/XCL1
CXCL16	MCP-2/CCL8 ♦
ENA-78/CXCL5 ♦	MCP-4/CCL13 ♦
Granzyme A ♦	MIP-1 δ /MIP-5/ CCL15 ♦
Eotaxin-2/CCL24/ MPIF-2 ♦	MIP-3 α /CCL20 ♦
Eotaxin-3/CCL26 ♦	I-TAC/CXCL11 ♦
IL-35	MIP-3 β /CCL19
CXCL6/GCP-2	MPIF-1/CCL23
HMGB1 ♦	SCF ♦
I-309/CCL1 ♦	SDF-1/CXCL12 ♦
Granzyme B ♦	TARC/CCL17 ♦
IFN β ♦	TPO ♦
IFN ω ♦	TRAIL/TNFSF10 ♦
IL-11	TSLP ♦
IL-23 ♦	Perforin ♦

Human Cytokine/Chemokine Panel II

☐ (Cat. No. HCP2MAG-62K)	
25 (Cat. No. HCP2MAG-62K-PX23)	
25 (Bulk Cat. No. HCP2MAG62KPX23BK)	
6Ckine/CCL21/ Exodus-2	IL-28A/IFN λ 2
BCA-1/CXCL13	IL-33/NF-HEV (mature)
CTACK/CCL27	LIF
ENA-78/CXCL5	MCP-2/CCL8
Eotaxin-2/CCL24/ MPIF-2	MCP-4/CCL13
Eotaxin-3/CCL26	MIP-1 δ /MIP-5/CCL15
I-309/CCL1	SCF
IL-16	SDF-1/CXCL12
IL-20	TARC/CCL17
IL-21	TPO
IL-23	TRAIL/TNFSF10
	TSLP

Human Cytokine/Chemokine Panel III

(Cat. No. HCP3MAG-63K)	
HCC-1/CCL14 ▲	M-CSF
IL-11	MIG/CXCL9
IL-29/IFN λ 1	MIP-3 α /CCL20
I-TAC/CXCL11	MIP-3 β /CCL19
CXCL6/GCP-2	NAP-2/CXCL7 ▲
Lymphotoxin/XCL1	

Human Cytokine/Chemokine Panel IV

☐ (Cat. No. HCP4MAG-64K)	
20 (Cat. No. HCY4MG-64K-PX20)	
20 (Bulk Cat. No. HCP4MG64KPX20BK)	
BAFF/Blys	IL-28B/IFN λ 3
BRAK/CXCL14	IL-32 α
CCL28	IL-34
CXCL16	IL-35
HCC-4/CCL16	IL-36 β /IL-1F8
HMGB1 ●	IL-37/IL-1F7
IFN β	IL-38/IL-1F10
IL-14/ α -Taxilin	MIP-4/PARC/CCL18
IL-19	MPIF/CCL23
IL-24	YKL40/CHI3L1

Human IL-18 Singleplex

(Cat. No. HIL18MAG-66K)	
IL-18	

Human High Sensitivity T Cell

☐ (Cat. No. HSTCMAG-28SK)	
15 (Cat. No. HSTCMAG28SPMX13) ♦	
15 (Bulk Cat. No. HSTCMAG28SPMX13BK) ♦	
21 (Cat. No. HSTCMAG28SPMX21)	
21 (Bulk Cat. No. HSTCMAG28SPMX21BK)	
Fractalkine/CX3CL1	IL-12 (p70) ♦
GM-CSF ♦	IL-13 ♦
IFN γ ♦	IL-17A/CTLA8
IL-1 β ♦	IL-21
IL-2 ♦	IL-23
IL-4 ♦	I-TAC/CXCL11
IL-5 ♦	MIP-1 α /CCL3
IL-6 ♦	MIP-1 β /CCL4
IL-7 ♦	MIP-3 α /CCL20
IL-8/CXCL8 ♦	TNF α ♦
IL-10 ♦	

MILLIPLEX® Immunology Kits

Profile more immune biomarkers faster with MILLIPLEX® multiplex immunoassays.

Learn more at SigmaAldrich.com/milliplex-immunology

Legend key for MILLIPLEX® kits

- † Analytes which cannot be plexed together:
 - Active and total
 - Free and total
- ♦ Available in Cat. No. listed
- ▼ Premix panel only
- Bulk indicates Space Saver Packaging
- ▲ These analytes cannot be plexed with other analytes in this panel in serum/plasma

- ▶ Requires a protease inhibitor during sample collection
- Requires sample extraction
- ** No standard/QC; antibody levels are reported as MFIs (Median Fluorescence Intensities)
- Serum/Plasma only
- ★ Tissue Culture samples only

- ^ Competitive assay format
- ☐ Available for custom premix
- Analyte requires a different sample dilution from others in panel
- Analyte cannot be measured in serum
- # Requires sample acidification
- § Analyte cannot be measured in plasma
- u Urine only

384-Well Human High Sensitivity T Cell

(Cat. No. HSTC384-28K)

21 (Cat. No. HSTCMAG384-PX21)

21 (Bulk Cat. No. HSTCMAG384PX21BK)

Fractalkine/CX3CL1	IL-12 (p70)
GM-CSF	IL-13
IFN γ	IL-17A/CTLA8
IL-1 β	IL-21
IL-2	IL-23
IL-4	I-TAC/CXCL11
IL-5	MIP-1 α /CCL3
IL-6	MIP-1 β /CCL4
IL-7	MIP-3 α /CCL20
IL-8/CXCL8	TNF α
IL-10	

Human Th17

(Cat. No. HTH17MAG-14K)

25 (Cat. No. HT17MG-14K-PX25)

25 (Bulk Cat. No. HT17MAG14PMX25BK)

GM-CSF	IL-17E/IL-25
IFN γ	IL-17F
IL-1 β	IL-21
IL-2	IL-22
IL-4	IL-23
IL-5	IL-27
IL-6	IL-28A/IFN λ 2
IL-9	IL-31
IL-10	IL-33/NF-HEV (mature)
IL-12 (p70)	MIP-3 α /CCL20
IL-13	TNF α
IL-15	TNF β /Lymphotoxin- α (LTA)
IL-17A/CTLA8	

Human CD8+ T Cell

17 (Cat. No. HCD8MAG-15K)

17 (Cat. No. HCD8MAG15K17PMX)

17 (Bulk Cat. No. HCD8MAG15KPX17BK)

sCD137/4-1BB/ TNFRSF9	IL-4
sFAS/TNFRSF6	IL-5
sFasL	IL-6
GM-CSF	IL-10
Granzyme A	IL-13
Granzyme B	MIP-1 α /CCL3
IFN γ	MIP-1 β /CCL4
IL-2	Perforin
	TNF α

Human Soluble Cytokine Receptor

(Cat. No. HSCRMAG-32K)

14 (Cat. No. HSCRMAG32KPX14)

14 (Bulk Cat. No. HSCRMAG32PMX14BK)

sCD30	sIL-6R
sEGFR/sHER1/ErbB1	sRAGE
sGP130	sTNF RI
sIL-1RI	sTNF RII
sIL-1RII	sVEGFR1/sFlt-1
sIL-2R α	sVEGFR2/sKDR/sFlk-1
sIL-4R	sVEGFR3/sFlt-4

Human Complement Expanded Panel 1 **NEW**

19 (Cat. No. HCMPEX1-19K)

Adipsin/Factor D	C9
C2	Factor I
C4b	Mannose-Binding Lectin (MBL)
C5	Properdin
C5a	

Human Complement Panel 2

19 (Cat. No. HCMP2MAG-19K)

C1q	C4
C3	Factor B
C3b	Factor H

Human MMP Panel 1

(Cat. No. HMMP1MAG-55K)

MMP-3	MMP-13
MMP-12	

Human MMP Panel 2

(Cat. No. HMMP2MAG-55K)

MMP-1	MMP-9
MMP-2	MMP-10
MMP-7	

Human TIMP Panel 1 (Serum/Plasma samples)

(Cat. No. HTMP1MAG-54K)

TIMP-1	TIMP-2
--------	--------

Human TIMP Panel 2 (Cell culture samples)

(Cat. No. HTMP2MAG-54K)

TIMP-1	TIMP-3
TIMP-2	TIMP-4

Human Fibrosis Panel 1

(Cat. No. HFIB1-100K)

COMP	Uteroglobin
IL-18BP α	

Human Interferon **NEW**

(Cat. No. HIFN-130K)

9 (Cat. No. HIFN-130K-PMX9)

IFN α 2	IFN ϵ
IFN β	IFN ω
IFN γ	IL-28A/IFN λ 2
IFN γ Receptor 1 (IFNGR1)	IL-28B/IFN λ 3
	IL-29/IFN λ 1

Immune Response

Human Autoimmune Autoantibody**

(Cat. No. HAIAB-10K)

QUALITATIVE KIT

β 2-Glycoprotein	PM/Sci 100
C1q	Proteinase 3
CENP-A	Ribosomal P
CENP-B	RNP
Jo-1	RNP/Sm
Ku	Sci-70
Mi-2	Sm
Myeloperoxidase (MPO)	SSA/Ro52
PCNA	SSA/Ro60
PL-12 (Alanyl-tRNA Synthetase)	SSB/La

Human Cytokine Autoantibody Expanded IgG, IgA, and IgM** **NEW**

IgG (Cat. No. HCYTABG-17K)

IgA (Cat. No. HCYTABA-17K)

IgM (Cat. No. HCYTABM-17K)

QUALITATIVE KIT

BAFF/Blys	IL-8/CXCL8
G-CSF	IL-10
GM-CSF	IL-12 (p40)
IFN α 2	IL-15
IFN β	IL-17A/CTLA8
IFN γ	IL-17F
IFN ω	IL-18
IL-1 α	IL-22
IL-2	Osteopontin
IL-3	PF4
IL-4	TNF α
IL-6	

Human Sepsis Panel 1

(Cat. No. HSP1MAG-63K)

sFAS/TNFRSF6	MIF
sFasL	PAI-1 (total)
sICAM-1	sVCAM-1

Human Sepsis Panel 2

(Cat. No. HSP2MAG-63K)

Granzyme B	MIP-1 α /CCL3
HSP70	MIP-1 β /CCL4
IL-1 α	MMP-8
IL-8/CXCL8	

MILLIPLEX® Autoantibody Profiling

Discover the benefits of multiplexing autoantibodies at [SigmaAldrich.com/milliplex-autoab](https://www.sigmaaldrich.com/milliplex-autoab)

Human Sepsis Panel 3

(Cat. No. HSP3MAG-63K)

Lactotransferrin (LTF)	Resistin
Neutrophil Elastase-2 (ELA2)	Thrombospondin-1 (TSP-1)
NGAL/Lipocalin-2	

Human Immunoglobulin Isotyping

☑ (Cat. No. HGAMMAG-301K)

IgA	IgG3
IgG1	IgG4
IgG2	IgM

Human IgE – Singleplex

(Cat. No. HGAMMAG-303E)

IgE

Virology**SARS-CoV-2 Antigen Panel 1 IgA****

(Cat. No. HC19SERA1-85K)

QUALITATIVE KIT

SARS-CoV-2 N	SARS-CoV-2 Spike S1
SARS-CoV-2 RBD	SARS-CoV-2 Spike S2

SARS-CoV-2 Antigen Panel 1 IgG**

(Cat. No. HC19SERG1-85K)

QUALITATIVE KIT

SARS-CoV-2 N	SARS-CoV-2 Spike S1
SARS-CoV-2 RBD	SARS-CoV-2 Spike S2

SARS-CoV-2 Antigen Panel 1 IgM**

(Cat. No. HC19SERM1-85K)

QUALITATIVE KIT

SARS-CoV-2 N	SARS-CoV-2 Spike S1
SARS-CoV-2 RBD	SARS-CoV-2 Spike S2

For Research Use Only. Not For Use In Diagnostic Procedures.

Metabolism/Endocrinology**Human Adipokine Panel 1 (Serum/Plasma samples)**

(Cat. No. HADK1MAG-61K)

Adiponectin	PAI-1 (total)
Adipsin/Factor D	Resistin
NGAL/Lipocalin-2	

Human Adipokine Panel 2 (Serum/Plasma samples)

(Cat. No. HADK2MAG-61K)

IL-1β	Leptin
IL-6	MCP-1/CCL2
IL-8/CXCL8	NGF
Insulin	TNFα

Human Adipocyte (Cell culture samples)

(Cat. No. HADCYMAG-61K)

Adiponectin	MCP-1/CCL2
HGF	NGF
IL-1β	PAI-1 (total)
IL-6	Resistin
IL-8/CXCL8	TNFα
Leptin	

Human Diabetes ▼

⑤ (Cat.No. HDIAB-34K-PMX5)

⑤ (Bulk Cat. No. HDIAB34KPMX5BK)

NON-CONFIGURABLE KIT

C-Peptide	Insulin
GLP-1 (active) †	Leptin
Glucagon †	

Human Metabolic Hormone V3

(Cat. No. HMH3-34K)

Amylin (active) † ‡	Insulin
Amylin (total) † ‡	Leptin
C-Peptide	MCP-1/CCL2
Ghrelin (active) †	Pancreatic Polypeptide (PP)
GIP (total)	PYY (total)
GLP-1 (active) † ‡	Secretin
GLP-1 (total) † ‡	TNFα
Glucagon †	
IL-6	

Human Myokine

(Cat. No. HMYOMAG-56K)

Apelin	IL-15
BDNF	Irisin
Erythropoietin (EPO)	LIF
FABP3	Myostatin/GDF8
FGF-21	Oncostatin-M (OSM)
Fractalkine/CX3CL1	Osteocrin (OSTN)/Musclin
FSTL1	Osteonectin/SPARC
IL-6	

Human Aging Panel 1

(Cat. No. HAGE1MAG-20K)

CTACK/CCL27	IL-6
FGF-21	IL-10*
GDF-11	IL-18
GDF15	Jag1
GnRH	Leptin

Human Liver Protein

(Cat. No. HLPFMAG-57K)

α-Fetoprotein (AFP)	FGF-19
ANGPTL3	FGF-21
ANGPTL4	FGF-23
ANGPTL6	HGF
FABP1	

Human IGF Binding Protein †

(Cat. No. HIGFBMAG-53K)

IGFBP1	IGFBP5
IGFBP2	IGFBP6
IGFBP3°	IGFBP7
IGFBP4	

Human IGF ■

(Cat. No. HIGFMAG-52K)

IGF-1	IGF-2
-------	-------

Human Pituitary Panel 1

(Cat. No. HPTP1MAG-66K)

ACTH	FSH
Agouti-Related Protein (AgRP)	GH
CNTF	LH
	TSH

Cardiovascular**Human CVD Panel 1**

(Cat. No. HCVD1MAG-67K)

BNP	LIGHT
CK-MB	NT proBNP
CXCL6/GCP-2	Oncostatin-M (OSM)
CXCL16	Placental Growth Factor (PlGF)
Endocan-1 (ESM-1)	Troponin I (TnI)
FABP3	
FABP4	

Human CVD Panel 2

(Cat. No. HCVD2MAG-67K)

ADAMTS13	Myoglobin
D-dimer ^s	NGAL/Lipocalin-2
GDF15	sP-Selectin
sICAM-1	Serum Amyloid A
Myeloperoxidase (MPO)	sVCAM-1

Legend key for MILLIPLEX® kits

† Analytes which cannot be plexed together:
– Active and total
– Free and total

◆ Available in Cat. No. listed

▼ Premix panel only

Bulk indicates Space Saver Packaging

▲ These analytes cannot be plexed with other analytes in this panel in serum/plasma

‡ Requires a protease inhibitor during sample collection

■ Requires sample extraction

** No standard/QC; antibody levels are reported as MFIs (Median Fluorescence Intensities)

● Serum/Plasma only

★ Tissue Culture samples only

^ Competitive assay format

☑ Available for custom premix

° Analyte requires a different sample dilution from others in panel

⊙ Analyte cannot be measured in serum

Requires sample acidification

^s Analyte cannot be measured in plasma

^u Urine only

**Human CVD Panel 3
(Acute Phase)**

(Cat. No. HCV3MAG-67K)

α-1-Acid Glycoprotein (AGP)	Haptoglobin
α-2-Macroglobulin	sL-Selectin
Adipsin/Factor D	Platelet Factor 4 (PF4)/CXCL4
CRP	Serum Amyloid P (SAP)
Fetuin A	
Fibrinogen ⊕	

Human CVD Panel 4

(Cat. No. HCV4MAG-67K)

sCD31/sPECAM-1	Thrombomodulin
sE-Selectin	Tissue Factor (TF)
Follistatin (FST)	Troponin T (TnT)
Pentraxin-3 (PTX3)	

Human CVD Panel 6

(Cat. No. HCV6MAG-67K)

sCD14	MCAM/MUC18
DPP4	Progranulin (pGRN)
Endostatin	ucMGP
LRG1	

Human Apolipoprotein

(Cat. No. APOMAG-62K)

Apo AI	Apo CII
Apo AII	Apo CIII
Apo B	Apo E

Bone**Human Bone**

(Cat. No. HBNMAG-51K)

ACTH	Osteocalcin (OC)
DKK1	Osteopontin (OPN)
FGF-23	Osteoprotegerin (OPG)
IL-1β	PTH
IL-6	Sclerostin (SOST)
Insulin	TNFα
Leptin	

Human RANKL – Singleplex

(Cat. No. HRNKMAG-51K-01)

RANKL

Cancer**Human Immuno-Oncology
Checkpoint Protein Panel 1**

(Cat. No. HCKP1-11K)

⑰ (Cat. No. HCKP1-11K-PX17)

⑰ (Bulk Cat. No. HCKP1-11K-PXBK17)

BTLA	HVEM
CD27	ICOS
CD28	LAG-3
CD40	PD-1
CD80/B7-1	PD-L1
CD86/B7-2	PD-L2
CTLA-4/CD152	TIM-3
GITR	TLR-2
GITRL	

**Human Immuno-Oncology
Checkpoint Protein Panel 2**

(Cat. No. HCKP2-11K)

4-1BBL/TNFSF9	FGL1/Hepassocin
5'-NT/CD73	Galectin-1
APRIL	Galectin-3
Arginase-1	Granulysin
B7-H2/ICOSL	Granzyme B
B7-H3/CD276	IDO1
B7-H4/VTCN1	MICA
B7-H5/VISTA	MICB
B7-H6	Nectin-2
BAFF/BLyS	Nectin-4
CD25/IL-2Rα	OX40/CD134
CD30/TNFRSF8	Perforin
CD40L	PVR/CD155
CD137/4-1BB	Siglec-7
CD226/DNAM-1	Siglec-9
E-Cadherin	

**Human Cancer
Autoantibody****

(Cat. No. HCABMAG-13K)

QUALITATIVE KIT

CCNB1/Cyclin B1	IGF2BP2/IMP2
CTAG1B/NY-ESO-1	IGF2BP3/IMP3
ENO1	Mucin-1 (MUC1)
Galectin-1 (GAL1)	P16-INK4a
Galectin-3 (GAL3)	p53
HER2/ErbB2	SOX2
HIF-1α	Survivin/BIRC5
HSP60	

**Human Circulating Cancer
Biomarker Panel 1**

(Cat. No. HCCBP1MAG-58K)

α-Fetoprotein (AFP)	IL-8/CXCL8
CA125	Leptin
CA15-3	MIF
CA19-9	Osteopontin (OPN)
CEA	Prolactin
CYFRA21-1	PSA (free)†
sFAS/TNFRSF6	PSA (total)†
sFasL	SCF
FGF-2/FGF-basic	TGFα
HCGβ	TNFα
HE4	TRAIL/TNFSF10
HGF	VEGF-A
IL-6	

**Human Circulating Cancer
Biomarker Panel 3**

(Cat. No. HCCBP3MAG-58K)

Cathepsin D	Melanoma Inhibitory Activity (MIA)
Ferritin	Myeloperoxidase (MPO)
Fibroblast Activation Protein (FAP)	Sex Hormone Binding Globulin (SHBG)
Galectin-3	
IGFBP3 ⊖	

**Human Circulating Cancer
Biomarker Panel 4**

(Cat. No. HCCB4MAG-58K)

ALDH1A1	Kallikrein-6
Carbonic Anhydrase 9 (CA9)	Mesothelin
CD44	Midkine
EpCAM	NCAM1/L1CAM/CD171
Hepsin	Transglutaminase 2 (TGM2)

**Human Cancer/Metastasis
Biomarker Panel 1**

(Cat. No. HCMBMAG-22K)

DKK1	Osteoprotegerin (OPG)
GDF15	Periostin
Neuron-specific Enolase (NSE)	TRAP5
Osteonectin/SPARC	TWEAK
	YKL40/CHI3L1

**Human Angiogenesis/Growth
Factor Panel 1**

(Cat. No. HAGP1MAG-12K)

Angiopoietin-2	HB-EGF
BMP-9	HGF
EGF	IL-8/CXCL8
Endoglin	Leptin
Endothelin-1	Placental Growth Factor (PIGF)
FGF-1/FGF-acidic	VEGF-A
FGF-2/FGF-basic	VEGF-C
Follistatin (FST)	VEGF-D
G-CSF	

MILLIPLEX® Cancer Kits

See how our kits are advancing cancer and immuno-oncology research at
SigmaAldrich.com/milliplex-cancer

Human Angiogenesis Panel 2

(Cat. No. HANG2MAG-12K)

Angiostatin/Kringle	sIL-6Ra
sAXL	sNeuropilin-1 (sNRP-1)
sCD31/sPECAM-1	Osteopontin (OPN)
sc-Kit/sStem Cell Factor Receptor (SCFR)	PDGF-AB/BB
sE-Selectin	Thrombospondin-2 (TSP-2)
sEGFR/sHER1/sErbB1	sTIE-2
sHER2/sEGFR2/sErbB2	suPAR
sHER3/sEGFR3/sErbB3	sVEGFR1/sFlt-1
sHGFR/sc-Met	sVEGFR2/sKDR/sFlk-1
	sVEGFR3/sFlt-4

Neuroscience**Human Amyloid Beta and Tau (CSF samples)**

(Cat. No. HNABTMAG-68K)

Amyloid beta 1-40	pTau (Thr181)
Amyloid beta 1-42	Tau (total)

Human Neuroscience Panel 1 (CSF samples)

(Cat. No. HNS1MAG-95K)

α-Synuclein	PARK5/Uchl1
Glial Fibrillary Acidic Protein (GFAP)	PARK7/DJ1
Neuron-specific Enolase (NSE)	Transglutaminase 2 (TGM2)

Human Neuroscience Panel 2

(Cat. No. HNS2MAG-95K)

Angiogenin (ANG) ^o	Ferritin
ApoE4 ^o	Neurogranin (NRGN)
FABP3	TREM2

Human Neurodegenerative Disease Panel 1

(Cat. No. HNDG1MAG-36K)

α-2-Macroglobulin	Complement Factor C3
Apo AI	
Apo CIII	Complement Factor H (CFH)
Apo E	

Human Neurodegenerative Disease Panel 2

(Cat. No. HNDG2MAG-36K)

α-1-Antitrypsin (A1AT)	MIP-4/PARC/CCL18
C4	PEDF
CRP	Serum Amyloid P (SAP)

Human Neurodegenerative Disease Panel 3

(Cat. No. HNDG3MAG-36K)

BDNF	PAI-1 (total)
Cathepsin D	PDGF-AA
sICAM-1	PDGF-AB/BB
Myeloperoxidase (MPO)	RANTES/CCL5
sNCAM	sVCAM-1

Human Neurodegenerative Disease Panel 4 (CSF samples)

(Cat. No. HNDG4MAG-36K)

Amyloid beta 1-40	sRAGE
Amyloid beta 1-42	S100B
GDNF	

Human Neurological Disorders Panel 3

(Cat. No. HND3MAG-39K)

Angiotensinogen (AGT)	Osteopontin (OPN)
Contactin-1	Soluble Superoxide Dismutase 1 (sSOD1)
Fetuin A ^o	Soluble Superoxide Dismutase 2 (sSOD2)
Kallikrein-6	

Human Neuropeptide ■ ▲

(Cat. No. HNP MAG-35K)

α-MSH	Oxytocin
β-Endorphin	Substance P
Neurotensin	

Human Circadian Stress ■ ▲

(Cat. No. HNC SMAG-35K)

Cortisol	Melatonin
----------	-----------

Toxicity**Human Kidney Injury Panel 1 (Urine samples)**

(Cat. No. HKI1MAG-99K)

Calbindin	KIM-1
Collagen IV	Renin
GSTα	TFF-3
IP-10/CXCL10	TIMP-1

Human Kidney Injury Panel 2 (Urine samples)

(Cat. No. HKI2MAG-99K)

α-1-Microglobulin	EGF
Albumin	NGAL/Lipocalin-2
Clusterin	Osteopontin (OPN)
Cystatin C	

Human Kidney Injury Panel 4 (Serum/Plasma samples)

(Cat. No. HKI4MAG-99K)

EGF	Osteopontin (OPN)
FABP1	PTH
IP-10/CXCL10	Renin
KIM-1	

Human Kidney Injury Panel 5 (Serum/Plasma samples)

(Cat. No. HKI5MAG-99K)

α-1-Microglobulin	Osteoactivin
Collagen IV	TIMP-1
NGAL/Lipocalin-2	Uromodulin

Human Kidney Injury Panel 6 (Serum/Plasma samples)

(Cat. No. HKI6MAG-99K)

β-2-Microglobulin	Cystatin C
Clusterin	RBP4

Human Liver Injury

(Cat. No. HLINJ MAG-75K)

5'NT/CD73	MDH1
ARG1	SDH
GSTα	

Explore Biomarkers for Alzheimer's Disease Research

Learn how to combine multiplex and high sensitivity assay analysis for AD biomarker studies at SigmaAldrich.com/immunoassays-AD

Legend key for MILLIPLEX® kits

† Analytes which cannot be plexed together:
 - Active and total
 - Free and total
 ◆ Available in Cat. No. listed
 ▼ Premix panel only
 Bulk indicates Space Saver Packaging
 ▲ These analytes cannot be plexed with other analytes in this panel in serum/plasma

▶ Requires a protease inhibitor during sample collection
 ■ Requires sample extraction
 ** No standard/QC; antibody levels are reported as MFIs (Median Fluorescence Intensities)
 ● Serum/Plasma only
 ★ Tissue Culture samples only

▲ Competitive assay format
 ● Available for custom premix
 ○ Analyte requires a different sample dilution from others in panel
 ⊙ Analyte cannot be measured in serum
 # Requires sample acidification
 § Analyte cannot be measured in plasma
 u Urine only

PRIMATE

Immunology

Non-Human Primate Cytokine/
Chemokine /Growth Factor
Panel A **NEW**

- (Cat. No. PRCYTA-40K)
- (Cat. No. PRCYTA-40K-PX38)◆
- (Cat. No. PRCYTA-40K-BK38)◆
- (Cat. No. PRCYTA-40K-PX48)
- (Cat. No. PRCYTA-40K-BK48)

BCA-1/CXCL13	IL-15◆
sCD137/4-1BB/ TNFRSF9◆	IL-16
sCD40L◆	IL-17A/CTLA8◆
Eotaxin/CCL11	IL-17E/IL-25
sFASL◆	IL-18◆
FGF-2/FGF-basic	IL-21◆
Fractalkine/CX3CL1	IL-22◆
G-CSF◆	IL-23◆
GM-CSF◆	IL-28A/IFNA2
Granzyme A◆	IL-31
Granzyme B◆	IL-33/NF-HEV (mature)◆
IFNa2◆	IP-10/CXCL10◆
IFNy◆	I-TAC/CXCL11◆
IL-1α	MCP-1/CCL2◆
IL-1β◆	MIG/CXCL9◆
IL-1RA◆	MIP-1α/CCL3◆
IL-2◆	MIP-1β/CCL4◆
IL-4◆	MIP-3α/CCL20◆
IL-5◆	Perforin◆
IL-6◆	RANTES/CCL5◆▲◆
IL-7◆	TGFα◆
IL-8/CXCL8◆	TNFα◆
IL-10◆	TNFβ/LTA
IL-12 (p70)◆	VEGF-A◆

Non-Human Primate
Cytokine/Chemokine Panel 1

- (Cat. No. PRCYTOMAG-40K)
- (Cat. No. PCYTMG-40K-PX23)
- (Bulk Cat. No. PRCYMAG40PMX23BK)

sCD40L	IL-12/23 (p40)
G-CSF	IL-13
GM-CSF	IL-15
IFNy	IL-17A/CTLA8
IL-1β	IL-18
IL-1Ra	MCP-1/CCL2
IL-2	MIP-1α/CCL3
IL-4	MIP-1β/CCL4
IL-5	TGFα
IL-6	TNFα
IL-8/CXCL8	VEGF-A
IL-10	

Non-Human Primate
Cytokine/Chemokine Panel 2

- (Cat. No. PRCYT2MAG40K)
- (Cat. No. PRCYTMAG40K-PX24)
- (Bulk Cat. No. PRCY2MG40PMX24BK)
- (Cat. No. PRCYTMAG40K-PX25)
- (Bulk Cat. No. PRCY2MG40PMX25BK)

sCD137/4-1BB/ TNFRSF9	IL-17E/IL-25
Eotaxin/CCL11	IL-21
sFasL	IL-22
FGF-2/FGF-basic	IL-23
Fractalkine/CX3CL1	IL-28A/IFNA2
Granzyme A	IL-31
Granzyme B	IL-33/NF-HEV (mature)
IL-1α	IP-10/CXCL10
IL-2	MIP-3α/CCL20
IL-4	Perforin
IL-6	RANTES/CCL5▲
IL-16	TNFβ/Lymphotoxin-α (LTA)
IL-17A/CTLA8	

Metabolism/
EndocrinologyNon-Human Primate
Metabolic Hormone

(Cat. No. NHPMHMAG-45K)

Amylin (active)◆	Insulin
C-Peptide	Leptin
Ghrelin (active)◆	MCP-1/CCL2
GIP (total)	Pancreatic Polypeptide (PP)
GLP-1 (active)◆	PYY (total)
Glucagon◆	
IL-6	

Non-Human Primate Pituitary
Panel 1

(Cat. No. NHPPT1MG-46K)

ACTH	FSH
Agouti-Related Protein (AgRP)	GH
CNTF	LH
	TSH

MOUSE

Immunology

Mouse Cytokine/Chemokine
Panel 1

- (Cat. No. MCYTOMAG-70K)
- (Cat. No. MCYTOMAG-70K-PMX)◆
- (Bulk Cat. No. MCYTOMAG70PMX25BK)◆
- (Cat. No. MCYTOMAG-70K-PX32)
- (Bulk Cat. No. MCYTOMAG70PMX32BK)

Eotaxin/CCL11	IL-13◆
G-CSF◆	IL-15◆
GM-CSF◆	IL-17A/CTLA8◆
IFNy◆	IP-10/CXCL10◆
IL-1α◆	KC/GRO/CINC-1/ CXCL1◆
IL-1β◆	LIF
IL-2◆	LIX
IL-3	MCP-1/CCL2◆
IL-4◆	M-CSF
IL-5◆	MIG/CXCL9
IL-6◆	MIP-1α/CCL3◆
IL-7◆	MIP-1β/CCL4◆
IL-9◆	MIP-2/CXCL2◆
IL-10◆	RANTES/CCL5◆
IL-12 (p40)◆	TNFα◆
IL-12 (p70)◆	VEGF-A

Mouse Cytokine/
Chemokine Panel 2

- (Cat. No. MECY2MAG-73K)
- (Cat. No. MECY2MAG-73KPMX)
- (Bulk Cat. No. MECY2MAG73KPMX)

Erythropoietin (EPO)	IL-17A/F
Exodus-2/ CCL21/6Ckine	IL-20
Fractalkine/CX3CL1	MCP-5/CCL12
IFNβ1	MDC/CCL22
IFNy	MIP-3α/CCL20
IL-11	MIP-3β/CCL19
IL-16	TARC/CCL17

Mouse High Sensitivity T Cell

- (Cat. No. MHSTCMAG-70K)
- (Cat. No. MHSTCMAG-70KPMX)
- (Bulk Cat. No. MHSTCMAG-70KPMX)

GM-CSF	IL-10
IFNy	IL-12 (p70)
IL-1α	IL-13
IL-1β	IL-17A/CTLA8
IL-2	KC/GRO/CINC-1/ CXCL1
IL-4	LIX
IL-5	MCP-1/CCL2
IL-6	MIP-2/CXCL2
IL-7	TNFα

Non-Human Primate Cytokine Analysis

Save time and sample with the largest bead-based non-human primate multiplex assay on the market.

Read more at SigmaAldrich.com/milliplex-primate

Mouse Th17

- ☐ (Cat. No. MTH17MAG-47K)
 25 (Cat. No. MT17MAG47K-PX25)
 25 (Bulk Cat. No. MT17MAG47PMX25BK)

sCD40L	IL-17E/IL-25
GM-CSF	IL-17F
IFN γ	IL-21
IL-1 β	IL-22
IL-2	IL-23
IL-4	IL-27
IL-5	IL-28B/IFN λ 3
IL-6	IL-31
IL-10	IL-33/NF-HEV (mature)
IL-12 (p70)	MIP-3a/CCL20
IL-13	TNF α
IL-15	TNF β /Lymphotoxin- α (LTA)
IL-17A/CTLA8	

Mouse CD8+ T Cell

- ☐ (Cat. No. MCD8MAG-48K)
 15 (Cat. No. MCD8MAG48K-PX15)
 15 (Bulk Cat. No. MCD8MAG48KPX15BK)

sCD137/4-1BB/ TNFRSF9	IL-4
sFas/TNFRSF6	IL-5
sFasL	IL-6
GM-CSF	IL-10
Granzyme B	IL-13
IFN γ	MIP-1 β /CCL4
IL-2	RANTES/CCL5
	TNF α

Mouse Soluble Cytokine Receptor

- ☐ (Cat. No. MSCRMAG-42K)

sCD30	sRAGE
sGP130	sTNF RI
sIL-1RI	sTNF RII
sIL-1RII	sVEGFR1/sFlt-1
sIL-2Ra	sVEGFR2/sKDR/sFlk-1
sIL-4R	sVEGFR3/sFlt-4
sIL-6R	

Mouse MMP Panel 1 (Serum/Plasma samples)

(Cat. No. MMMP1MAG-79K)

MMP-2	MMP-8
MMP-3	

Mouse MMP Panel 2 (Serum/Plasma samples)

(Cat. No. MMMP2MAG-79K)

proMMP-9	MMP-12
----------	--------

Mouse MMP Panel 3 (Cell culture samples)

(Cat. No. MMMP3MAG-79K)

MMP-2	proMMP-9
MMP-3	MMP-12
MMP-8	

Immune Response**Mouse Immunoglobulin Isotyping**

- ☐ (Cat. No. MGAMMAG-300K)

IgA	IgG2b
IgG1	IgG3
IgG2a	IgM

Metabolism/Endocrinology**Mouse Adipokine (Serum/Plasma samples)**

(Cat. No. MADKMAG-71K)

IL-6	PAI-1 (total)
Insulin	Resistin
Leptin	TNF α
MCP-1/CCL2	

Mouse Adipocyte (Cell culture samples)

(Cat. No. MADCYMAG-72K)

Adiponectin	PAI-1 (total)
IL-6	Resistin
Leptin	TNF α
MCP-1/CCL2	

Mouse Adiponectin – Singleplex (Serum/Plasma samples)

(Cat. No. MADPNMAG-70K-01)

Adiponectin

Mouse Metabolic Hormone Expanded

(Cat. No. MMHE-44K)

Amylin (active) \blacktriangleright	Leptin
C-Peptide 2	MCP-1/CCL2
Ghrelin (active) \blacktriangleright	Pancreatic Polypeptide (PP)
GIP (total)	PYY (total)
GLP-1 (active) \blacktriangleright	Resistin
GLP-1 (total) \blacktriangleright	Secretin
Glucagon \blacktriangleright	TNF α
IL-6	
Insulin	

Mouse Myokine

(Cat. No. MMYOMAG-74K)

BDNF	Irisin
Erythropoietin (EPO) \star	LIF
FGF-21	Myostatin/GDF8
Follistatin-like Protein 1 (FSTL1)	Oncostatin-M (OSM)
IL-6	Osteocrin (OSTN)/Musclin
IL-15	Osteonectin/SPARC

Mouse Aging Panel 1

(Cat. No. MAGE1MAG-25K)

CTACK/CCL27	Jag1
FGF-21	Leptin
GnRH	Notch1
IL-6	TNF α

Mouse Pituitary

(Cat. No. MPTMAG-49K)

ACTH	LH
BDNF	Prolactin
FSH	TSH
GH	

Cardiovascular**Mouse CVD Panel 1**

(Cat. No. MCVD1MAG-77K)

sCD31/sPECAM-1	ProMMP-9
sE-Selectin	sP-Selectin
sICAM-1	Thrombomodulin
PAI-1 (total)	

Mouse CVD Panel 2

(Cat. No. MCVD2MAG-77K)

sCD40L	Oncostatin M (OSM)
CXCL16	Placental Growth Factor 2
Endocan-1 (ESM-1)	Troponin I (TnI)
Follistatin (FST)	Troponin T (TnT)
LIGHT	

Legend key for MILLIPLEX® kits

- + Analytes which cannot be plexed together:
 - Active and total
 - Free and total
- ◆ Available in Cat. No. listed
- ▼ Premix panel only
- Bulk indicates Space Saver Packaging
- ▲ These analytes cannot be plexed with other analytes in this panel in serum/plasma

- ▶ Requires a protease inhibitor during sample collection
- Requires sample extraction
- ** No standard/QC; antibody levels are reported as MFIs (Median Fluorescence Intensities)
- Serum/Plasma only
- ★ Tissue Culture samples only

- ^ Competitive assay format
- ☐ Available for custom premix
- Analyte requires a different sample dilution from others in panel
- Analyte cannot be measured in serum
- # Requires sample acidification
- § Analyte cannot be measured in plasma
- u Urine only

Mouse Acute Phase Panel 2

(Cat. No. MAP2MAG-76K)

α-1-Acid Glycoprotein (AGP)	CRP
α-2-Macroglobulin	Haptoglobin
Adipsin/Factor D	Serum Amyloid P (SAP)

Cancer**Mouse Angiogenesis / Growth Factor Panel 1**

(Cat. No. MAGPMAG-24K)

sALK-1	IL-6
Amphiregulin	IL-17A/CTLA8
Angiopoietin-2 ▲	KC/GRO/CINC-1/CXCL1
Betacellulin ▲	Leptin
sCD31/sPECAM-1 ▲	MCP-1/CCL2
EGF	MIP-1α/CCL3
Endoglin	Placental Growth Factor 2
Endothelin-1	Prolactin
sFasL	SDF-1/CXCL12
FGF-2/FGF-basic	TNFα
Follistatin (FST)	VEGF-A
G-CSF	VEGF-C
HGF	VEGF-D
IL-1β	

Mouse Immuno-Oncology Checkpoint Protein Panel 1**NEW**

- 🔍 (Cat. No. MCKP1-110K)
- 🔍 (Cat. No. MCKP1-110K-PX28)
- 🔍 (Bulk Cat No. MCKP1-110K-PBK28)

4-1BBL/TNFSF9	Galectin-1
5'-NT/CD73	Galectin-3
B7-H2/ICOSL	GITR
B7-H3/CD276	Granzyme B
BCA-1/CXCL13	HVEM
BTLA	IFNγ
CD137/4-1BB	IL-10
CD226/DNAM-1	LAG-3
CD25/IL-2Rα	PD-1
CD27	PD-L1
CD40	PD-L2
CD80/B7-1	TIM-3
CTLA-4/CD152	TLR-2
E-Cadherin	TNFα

Neuroscience**Mouse Amyloid Beta**

(Cat. No. MABMAG-83K)

Amyloid beta 1-40	Amyloid beta 1-42
-------------------	-------------------

Mouse Neuropeptide ■ ^

(Cat. No. RMNPMAG-83K)

α-MSH	Oxytocin
β-Endorphin	Substance P
Neurotensin	

Toxicity**Mouse Kidney Injury Panel 1**

(Cat. No. MKI1MAG-94K)

β-2-Microglobulin ^u	Renin
IP-10/CXCL10	TIMP-1
KIM-1	VEGF-A ^u

Mouse Kidney Injury Panel 2

(Cat. No. MKI2MAG-94K)

Clusterin	NGAL/Lipocalin-2
Cystatin C	Osteopontin (OPN)
EGF	

RAT**Immunology****Rat Cytokine/Chemokine**

- 🔍 (Cat. No. RECYTMAG-65K)
- 🔍 (Cat. No. RECYMAG65K27PMX)
- 🔍 (Bulk Cat. No. RECYMAG65PMX27BK)

EGF	IL-10
Eotaxin/CCL11	IL-12 (p70)
Fractalkine/CX3CL1	IL-13
G-CSF	IL-17A/CTLA8
GM-CSF	IL-18
KC/GRO/CINC-1/CXCL1	IP-10/CXCL10
IFNγ	Leptin
IL-1α	LIX
IL-1β	MCP-1/CCL2
IL-2	MIP-1α/CCL3
IL-4	MIP-2/CXCL2
IL-5	RANTES/CCL5
IL-6	TNFα
	VEGF

Metabolism/Endocrinology**Rat Adipokine (Serum/Plasma samples)**

(Cat. No. RADPKMAG-80K)

IL-1β	MCP-1/CCL2
IL-6	PAI-1 (total)
Insulin	TNFα
Leptin	

Rat Adipocyte (Cell culture samples)

(Cat. No. RADPCMAG-82K)

Adiponectin	MCP-1/CCL2
IL-1β	PAI-1 (total)
IL-6	TNFα
Leptin	

Rat Metabolic Hormone Expanded **NEW**

(Cat. No. RMHE-120K)

Amylin (active) [▶]	Insulin
C-Peptide 2	Leptin
Ghrelin (active) [▶]	MCP-1/CCL2
GIP (total)	Pancreatic Polypeptide (PP)
GLP-1 (active) ⁺ [▶]	PYY (total)
GLP-1 (total) ⁺ [▶]	Secretin
Glucagon [▶]	TNFα
IL-6	

Rat Myokine

(Cat. No. RMYOMAG-88K)

BDNF	IL-15
Erythropoietin (EPO)	Irisin
FGF-21	LIF
Follistatin-like Protein 1 (FSTL1)	Myostatin/GDF8
Fractalkine/CX3CL1	Osteocrin (OSTN)/Musclin
IL-6	Osteonectin/SPARC

Rat Pituitary

(Cat. No. RPTMAG-86K)

ACTH	LH
BDNF	Prolactin
FSH	TSH
GH	

Rat Stress Hormone ■

(Cat. No. RSHMAG-69K)

ACTH	Melatonin ^
Corticosterone ^	

Rat Thyroid

(Cat. No. RTHYMAG-30K)

T3 ^	TSH
T4 ^	

Cardiovascular**Rat Cardiac Injury Panel 1**

(Cat. No. RCI1MAG-87K)

Cardiac Troponin I (cTnI)	FABP3
Cardiac Troponin T (cTnT)	Follistatin-like Protein 1 (FSTL1)
Creatine Kinase Muscle (CKM)	Myosin Light Chain 3 (MYL3)
	TIMP-1

Quality in Every MILLIPLEX® Kit

We pride ourselves in our quality R&D, support, manufacturing, and QC.

Read more at: SigmaAldrich.com/milliplex-quality

Rat Vascular Injury Panel 1
(Serum/Plasma samples)

(Cat. No. RV1MAG-26K)

Caveolin-1	IL-6
Connective Tissue Growth Factor (CTGF)	MCP-1/ CCL2
KC/GRO/CINC-1/ CXCL1	PAI-1 (total)
	TIMP-1
	TNFα
	VEGF

Rat Vascular Injury Panel 2
(Serum/Plasma samples)

(Cat. No. RV2MAG-26K)

Adiponectin	sICAM-1
sE-Selectin	

Rat Vascular Injury Panel 3
(Serum/Plasma samples)

(Cat. No. RV3MAG-26K)

α-1-Acid Glycoprotein (AGP)	Haptoglobin
α-2-Macroglobulin (A2M)	

Bone**Rat Bone Panel 1**
(Serum/Plasma samples)

(Cat. No. RBN1MAG-31K)

ACTH	Leptin
DKK1	Osteoprotegerin (OPG)
FGF-23	PTH
Insulin	Sclerostin (SOST)

Neuroscience**Rat Neuropeptide** ■ ^

(Cat. No. RMNPMAG-83K)

α-MSH	Oxytocin
β-Endorphin	Substance P
Neurotensin	

Toxicity**Rat Kidney Toxicity Panel 1**
(Urine samples)

(Cat. No. RKTX1MAG-37K)

Clusterin	Osteopontin (OPN)
GSTα^	TIMP-1
IP-10/CXCL10	VEGF-A
KIM-1	

Rat Kidney Toxicity Panel 2
(Urine samples)

(Cat. No. RKTX2MAG-37K)

α-1-Acid Glycoprotein (AGP)	Cystatin C
Albumin^	EGF
β-2-Microglobulin	NGAL/Lipocalin-2

Rat Liver Injury

(Cat. No. RLI1MAG-92K)

5'NT/CD73	GSTα
ARG1	SDH
GOT1	

**COMPANION/
AGRICULTURAL****Immunology****Bovine Cytokine/Chemokine Panel 1**

- (Cat. No. BCYT1-33K)
- 15 (Cat. No. BCYT1-33K-PX15)
- 15 (Bulk Cat. No. BCYT1-33K-PXBK15)

IFNγ	IL-36RA/IL-1F5
IL-1α	IP-10/CXCL10
IL-1β	MCP-1/CCL2
IL-4	MIP-1α/CCL3
IL-6	MIP-1β/CCL4
IL-8/CXCL8	TNFα
IL-10	VEGF-A
IL-17A/CTLA8	

Canine Cytokine/Chemokine

- (Cat. No. CCYTOMAG-90K)
- 13 (Cat. No. CCYTMG-90K-PX13)
- 13 (Bulk Cat. No. CCYTMAG90KPX13BK)

GM-CSF	IL-15
IFNγ	IL-18
IL-2	IP-10/CXCL10
IL-6	KC-like
IL-7	MCP-1/CCL2
IL-8/CXCL8	TNFα
IL-10	

Chicken Cytokine/Chemokine

- (Cat. No. GCYT1-16K)
- 12 (Cat. No. GCYT1-16K-PX12)
- 12 (Cat. No. GCYT1-16K-PXBK12)

IFNα	IL-21
IFNγ	M-CSF
IL-2	MIP-1β/CCL4
IL-6	MIP-3α/CCL20
IL-10	RANTES/CCL5
IL-16	VEGF

Equine Cytokine/Chemokine

- (Cat. No. EQCYTMAG-93K)
- 23 (Cat. No. EQCYTMG-93KPX23)
- 23 (Cat. No. EQCTMG93KPX23BK)

Eotaxin/CCL11	IL-6
FGF-2/FGF-basic	IL-8/CXCL8
Fractalkine/CX3CL1	IL-10
G-CSF	IL-12 (p70)
GM-CSF	IL-13
GRO	IL-17A/CTLA8
IFNγ	IL-18
IL-1α	IP-10/CXCL10
IL-1β	MCP-1/CCL2
IL-2	RANTES/CCL5
IL-4	TNFα
IL-5	

MILLIPLEX® Veterinary Medicine and Animal Health Kits

Expand your possibilities in animal health research with our wide selection of biomarker kits.

Discover more at SigmaAldrich.com/vetmed**Legend key for MILLIPLEX® kits**

- † Analytes which cannot be plexed together:
 - Active and total
 - Free and total
- ◆ Available in Cat. No. listed
- ▼ Premix panel only
- Bulk indicates Space Saver Packaging
- ▲ These analytes cannot be plexed with other analytes in this panel in serum/plasma
- ▶ Requires a protease inhibitor during sample collection
- Requires sample extraction
- ** No standard/QC; antibody levels are reported as MFIs (Median Fluorescence Intensities)
- Serum/Plasma only
- ★ Tissue Culture samples only
- ^ Competitive assay format
- Available for custom premix
- Analyte requires a different sample dilution from others in panel
- Analyte cannot be measured in serum
- # Requires sample acidification
- § Analyte cannot be measured in plasma
- u Urine only

Feline Cytokine/Chemokine ▼

- 19 (Cat. No. FCYTMAG-20K-PMX)
 19 (Bulk Cat. No. FCYTMAG20KPX19BK)
NON-CONFIGURABLE KIT

sFAS/TNFRSF6	IL-13
Flt3 Ligand	IL-18
GM-CSF	KC/GRO/CINC-1/ CXCL1
IFN γ	MCP-1/CCL2
IL-1 β	PDGF-BB
IL-2	RANTES/CCL5
IL-4	SCF
IL-6	SDF-1/CXCL12
IL-8/CXCL8	TNF α
IL-12 (p40)	

Ovine Cytokine/Chemokine Panel 1

- 20 (Cat. No. SCYT1-91K)
 14 (Cat. No. SCYT-91K-PX14)
 14 (Bulk Cat. No. SCYT-91K-PXBK14)

IFN γ	IL-17A/CTLA8
IL-1 α	IL-36RA/IL-1F5
IL-1 β	IP-10/CXCL10
IL-4	MIP-1 α /CCL3
IL-6	MIP-1 β /CCL4
IL-8/CXCL8	TNF α
IL-10	VEGF-A

Porcine Cytokine/Chemokine

- 20 (Cat. No. PCYTMAG-23K)
 15 (Cat. No. PCYTMAG-23K-13PX)
 15 (Bulk Cat. No. PCYTMAG23PMX13BK)

GM-CSF	IL-6
IFN γ	IL-8/CXCL8
IL-1 α	IL-10
IL-1 β	IL-12
IL-1Ra	IL-18
IL-2	TNF α
IL-4	

**Metabolism/
Endocrinology****Canine Gut Hormone**

(Cat. No. CGTMAG-98K)

Amylin (total) ▶	Insulin
Ghrelin (active) ▶	Leptin
GIP (total)	Pancreatic Polypeptide (PP)
GLP-1 (active) ▶	PYY (total)
Glucagon	

Canine Pituitary Expanded Panel

(Cat. No. CANPIT-96K)

ACTH	LH
FSH	Prolactin
GH	TSH

Toxicity**Canine Kidney Toxicity Expanded Panel 1 (Urine samples)**

(Cat. No. CKT1MAG-97K)

Clusterin	MCP-1/CCL2
Cystatin C	NGAL/Lipocalin-2
IL-8/CXCL8	Osteopontin (OPN)
KIM-1	

Canine Kidney Toxicity Panel 2 (Urine samples)

(Cat. No. CKT2MAG-97K)

Albumin	RBP4
β -2-Microglobulin	TFF-3

MULTI-SPECIES**Immunology****Multi-Species TGF β – Singleplex #**

(Cat. No. TGFBMAG-64K-01)
 (Bulk Cat. No. TGFBMAG-64K-01BK)
 Species: C, E, F, H, M, NHP, Por, R, guinea pig, hamster, rabbit

TGF β 1

Multi-Species TGF β – 3 Plex ▼#

(Cat. No. TGFBMAG-64K-03)
 Species: H, M, NHP, R, guinea pig, hamster, mini pig; additionally, TGF- β 1 and TGF- β 2 can be detected in the serum of C, E, and rabbit

NON-CONFIGURABLE KIT

TGF β 1	TGF β 3
TGF β 2	

**Metabolism/
Endocrinology****Multi-Species Hormone ■ ^**

(Cat. No. MSHMAG-21K)
 Species: C, E, F, H, M, NHP, Por, R, guinea pig, hamster, rabbit

Cortisol	Testosterone
Estradiol	T3
Progesterone	T4

KITS TO BE PHASED OUT**Human Cytokine/Chemokine Panel I**

- 20 (Cat. No. HCYTOMAG-60K)
 29 (Cat. No. HCYTMAG-60K-PX29)
 29 (Bulk Cat. No. HCYTMAG60PMX29BK)
 30 (Cat. No. HCYTMAG-60K-PX30) ♦
 30 (Bulk Cat. No. HCYTMAG60PMX30BK) ♦
 38 (Cat. No. HCYTMAG-60K-PX38)
 38 (Bulk Cat. No. HCYTMAG60PMX38BK)
 41 (Cat. No. HCYTMAG-60K-PX41)
 41 (Bulk Cat. No. HCYTMAG60PMX41BK)

sCD40L	IL-9
EGF ♦	IL-10 ♦
Eotaxin/CCL11 ♦	IL-12 (p40) ♦
FGF-2/FGF-basic	IL-12 (p70) ♦
Flt3 Ligand	IL-13 ♦
Fractalkine/CX3CL1	IL-15 ♦
G-CSF ♦	IL-17A/CTLA8 ♦
GM-CSF ♦	IP-10/CXCL10 ♦
GRO	MCP-1/CCL2 ♦
IFN α 2 ♦	MCP-3/CCL7
IFN γ ♦	MDC/CCL22
IL-1 α ♦	MIP-1 α /CCL3 ♦
IL-1 β ♦	MIP-1 β /CCL4 ♦
IL-1Ra ♦	PDGF-AA ▲ °
IL-2 ♦	PDGF-AB/BB ▲ °
IL-3 ♦	RANTES/CCL5 ▲ ♦
IL-4 ♦	TGF α
IL-5 ♦	TNF α ♦
IL-6 ♦	TNF β /Lymphotoxin- α (LTA) ♦
IL-7 ♦	VEGF-A ♦
IL-8/CXCL8 ♦	

Human Metabolic Hormone

(Cat. No. HMHEMAG-34K)

Amylin (active) ▶	IL-6
Amylin (total) ▶	Insulin
C-Peptide	Leptin
Ghrelin (active) ▶	MCP-1/CCL2
GIP (total)	Pancreatic Polypeptide (PP)
GLP-1 (active) ▶	PYY (total)
GLP-1 (total) ▶	TNF α
Glucagon ▶	

Rat Metabolic Hormone

(Cat. No. RMHMAG-84K)

Amylin (active) ▶	Insulin
C-Peptide 2	Leptin
Ghrelin (active) ▶	MCP-1/CCL2
GIP (total)	Pancreatic Polypeptide (PP)
GLP-1 (active) ▶	PYY (total)
Glucagon ▶	TNF α
IL-6	

Cell Signaling MILLIPLEX® Assays

Akt/mTOR (Phosphoprotein) – 11 Plex

(Cat. No. 48-611MAG) AB2 ▼ **NON-CONFIGURABLE KIT**

Analyte	Total	Phosphorylated	
Akt/PKB	✓ (Ser473)	H, M, R	
GSK3α	✓ (Ser21)	H, M, R	
GSK3β	✓ (Ser9)	H, M, R	
IGF1R	✓ (Tyr1135/1136)	H, M	
IR	✓ (Tyr1162/1163)	H	
IRS1	✓ (Ser636)	H, M, R	
mTOR	✓ (Ser2448)	H, M, R	
p70S6 Kinase	✓ (Thr412)	H, M, R	
PTEN	✓ (Ser380)	H, M, R	
RPS6	✓ (Ser235/236)	H, M, R	
TSC2	✓ (Ser939)	H, M, R	

Akt/mTOR (Total) – 11 Plex

(Cat. No. 48-612MAG) AB2 ▼ **NON-CONFIGURABLE KIT**

Analyte	Total	Phosphorylated	
Akt/PKB	✓	H, M, R	
GSK3α	✓	H, M, R	
GSK3β	✓	H, M, R	
IGF1R	✓	H, M, R	
IR	✓	H, R	
IRS1	✓	H, M, R	
mTOR	✓	H, M, R	
p70S6 Kinase	✓	H, M, R	
PTEN	✓	H, M, R	
RPS6	✓	H, M, R	
TSC2	✓	H, M, R	

Early Apoptosis – 7 Plex

(Cat. No. 48-669MAG) AB2 ▼ **NON-CONFIGURABLE KIT**

Analyte	Total	Phosphorylated	
Akt/PKB	✓ (Ser473)	H, M, R	
BAD	✓ (Ser112)	H, M	
Bcl-2	✓ (Ser70)	H	
Active Caspase-8 (Asp384)	✓	H	
Active Caspase-9 (Asp315)	✓	H	
JNK/SAPK1	✓ (Thr183/Tyr185)	H, M, R	
p53	✓ (Ser46)	H	

Human Bcl-2 Family Apoptosis Panel 1 - 6 Plex

(Cat. No. 48-682MAG) AB1 ▼ **NON-CONFIGURABLE KIT**

Analyte	Total	Phosphorylated	
BAD	✓	✓ (Ser112)	H
BAX	✓		H
Bcl-xL/BAD (interaction)	✓		H
BIM	✓		H
Mcl-1/BIM (interaction)	✓		H

Human Bcl-2 Family Apoptosis Panel 2 - 4 Plex

(Cat. No. 48-683MAG) AB1 ▼ **NON-CONFIGURABLE KIT**

Analyte	Total	Phosphorylated	
Bcl-2	✓		H
Bcl-xL	✓		H
Mcl-1	✓		H
NOXA/Mcl-1 (interaction)	✓		H

Human DNA Damage/Genotoxicity – 7 Plex

(Cat. No. 48-621MAG) AB1 ▼ **NON-CONFIGURABLE KIT**

Analyte	Total	Phosphorylated	
ATR	✓		H
Chk1		✓ (Ser345)	H, M, R
Chk2		✓ (Thr68)	H
H2A.X		✓ (Ser139)	H, M, R
MDM2	✓		H, M, R
p21	✓		H
p53		✓ (Ser15)	H

MAPK/SAPK (Phosphoprotein) – 10 Plex

(Cat. No. 48-660MAG) AB2 ▼ **NON-CONFIGURABLE KIT**

Analyte	Total	Phosphorylated	
ATF2		✓ (Thr71)	H, M
c-Jun		✓ (Ser73)	H, M, R
Erk/MAPK 1/2		✓ (Thr185/Tyr187)	H, M, R
HSP27		✓ (Ser78)	H
JNK/SAPK1		✓ (Thr183/Tyr185)	H, M, R
MEK1		✓ (Ser222)	H, M, R
MSK1		✓ (Ser212)	H, M
p38/SAPK2A/B		✓ (Thr180/Tyr182)	H, M, R
p53		✓ (Ser15)	H
STAT1		✓ (Tyr701)	H, M

Learn more about Cancer and Metastasis Signaling Pathways

Read about all of the kits that can elucidate your signaling research at SigmaAldrich.com/milliplex-cancer-cs

- Can be plexed with other 2 Plexes
 - * Cannot plex with other phospho Akt
 - ▼ Premix panel only
- AB1:** Uses Assay Buffer 1 **AB2:** Uses Assay Buffer 2
- H** Human **M** Mouse **R** Rat

Human RTK (Phosphoprotein)

(Choose analytes that meet your needs)

(Cat. No. HPRTKMAG-01K) AB1

Analyte	Total	Phosphorylated	
c-Kit	(pan Tyr)	H	
c-Met/HGFR	(pan Tyr)	H	
ErbB1/EGFR	(pan Tyr)	H	
ErbB2/HER2	(pan Tyr)	H	
ErbB3/HER3	(pan Tyr)	H	
ErbB4/HER4	(pan Tyr)	H	
FGFR1	(pan Tyr)	H	
Flt3	(pan Tyr)	H	
IGF1R	(pan Tyr)	H	
IR	(pan Tyr)	H	
M-CSFR	(pan Tyr)	H	
PDGFR α	(pan Tyr)	H, M, R	
PDGFR β	(pan Tyr)	H	
TIE1	(pan Tyr)	H	
TIE2	(pan Tyr)	H	
VEGFR1/Flt-1	(pan Tyr)	H	
VEGFR2/KDR/Fik-1	(pan Tyr)	H	
VEGFR3/Flt-4	(pan Tyr)	H, M, R	

Multi-Pathway (Phosphoprotein) – 9 Plex(Cat. No. 48-680MAG) AB2 ▼ **NON-CONFIGURABLE KIT**

Analyte	Total	Phosphorylated	
Akt/PKB	✓ (Ser473)	H, M, R	
CREB	✓ (Ser133)	H, M, R	
Erk/MAPK 1/2	✓ (Thr185/Tyr187)	H, M, R	
JNK/SAPK1	✓ (Thr183/Tyr185)	H, M, R	
NF κ B	✓ (Ser536)	H, M, R	
p38/SAPK2A/B	✓ (Thr180/Tyr182)	H, M, R	
p70S6 Kinase	✓ (Thr412)	H, M, R	
STAT3	✓ (Ser727)	H, M, R	
STAT5A/B	✓ (Tyr694/699)	H, M, R	

Multi-Pathway (Total) – 9 Plex(Cat. No. 48-681MAG) AB2 ▼ **NON-CONFIGURABLE KIT**

Analyte	Total	Phosphorylated	
Akt/PKB	✓	H, M, R	
CREB	✓	H, M, R	
Erk/MAPK 1/2	✓	H, M, R	
JNK/SAPK1	✓	H, M, R	
NF κ B	✓	H, M, R	
p38/SAPK2A/B	✓	H, M, R	
p70S6 Kinase	✓	H, M, R	
STAT3	✓	H, M, R	
STAT5A/B	✓	H, M, R	

NF κ B – 6 Plex(Cat. No. 48-630MAG) AB1 ▼ **NON-CONFIGURABLE KIT**

Analyte	Total	Phosphorylated	
c-Myc	✓	H	
FADD	✓ (Ser194)	H	
I κ B α	✓ (Ser32)	H	
IKK α / β	✓ (Ser177/181)	H	
NF κ B	✓ (Ser536)	H, M	
TNFR1	✓	H	

Protein Translation – 6 Plex(Cat. No. 48-655MAG) AB2 ▼ **NON-CONFIGURABLE KIT**

Analyte	Total	Phosphorylated	
eIF2a	✓ (Ser51)	H, M, R	
eIF-4B	✓ (Ser422)	H, M, R	
eIF-4E	✓ (Ser209)	H, M, R	
eIF-4G	✓ (Ser1108)	H, M, R	
4E-BP1	✓	✓ (Thr37/46)	H, M, R

Human Ras-Raf Oncoprotein – 6 Plex(Cat. No. 48-684MAG) AB2 ▼ **NON-CONFIGURABLE KIT** **NEW**

Analyte	Total	Phosphorylated	
BRAF	✓ (Ser446)	H, M, R	
CRAF	✓ (Ser338)	H, M, R	
MEK1	✓ (Ser217/221)	H, M, R	
Ras	✓	H, M, R	
RasG12D	✓	H	
RasG12V	✓	H	

Src Family Kinase Active Site (Phosphoprotein) – 8 Plex(Cat. No. 48-650MAG) AB2 ▼ **NON-CONFIGURABLE KIT**

Analyte	Total	Phosphorylated	
Blk	✓ (Tyr389)	H	
Fgr	✓ (Tyr412)	H, R	
Fyn	✓ (Tyr420)	H, M, R	
Hck	✓ (Tyr411)	H, M	
Lck	✓ (Tyr394)	H, M, R	
Lyn	✓ (Tyr397)	H, R	
Src	✓ (Tyr419)	H, M, R	
Yes	✓ (Tyr421)	H, M, R	

STAT (Phosphoprotein) – 5 Plex(Cat. No. 48-610MAG) AB2 ▼ **NON-CONFIGURABLE KIT**

Analyte	Total	Phosphorylated	
STAT1	✓ (Tyr701)	H, M	
STAT2	✓ (Tyr690)	H	
STAT3	✓ (Tyr705)	H, M, R	
STAT5A/B	✓ (Tyr694/699)	H, M, R	
STAT6	✓ (Tyr641)	H	

T-Cell Receptor (Phosphoprotein) – 7 Plex(Cat. No. 48-690MAG) AB2 ▼ **NON-CONFIGURABLE KIT**

Analyte	Total	Phosphorylated	
CD3ε		✓ (pan Tyr)	H
CREB		✓ (Ser133)	H, M, R
Erk/MAPK 1/2		✓ (Thr185/Tyr187)	H, M, R
LAT		✓ (pan Tyr)	H
Lck		✓ (pan Tyr)	H, M, R
Syk		✓ (pan Tyr)	H
ZAP-70		✓ (pan Tyr)	H

TGFβ – 6 Plex(Cat. No. 48-614MAG) AB2 ▼ **NON-CONFIGURABLE KIT**

Analyte	Total	Phosphorylated	
Akt/PKB		✓ (Ser473)	H, M, R
Erk/MAPK 1/2		✓ (Thr185/Tyr187)	H, M, R
SMAD2		✓ (Ser465/467)	H, M, R
SMAD3		✓ (Ser423/425)	H, M, R
SMAD4	✓		H, M, R
TGFβRII	✓		H

Akt Phospho/Total – 2 Plex(Cat. No. 48-618MAG) AB2 ▼ * ●● **NON-CONFIGURABLE KIT**

Analyte	Total	Phosphorylated	
Akt/PKB		✓ (Ser473)	H, M, R
Akt/PKB	✓		H, M, R

Akt1 Phospho/Total – 2 Plex(Cat. No. 48-631MAG) AB2 ▼ * ●● **NON-CONFIGURABLE KIT**

Analyte	Total	Phosphorylated	
Akt1		✓ (Ser473)	H, M, R
Akt1	✓		H, M, R

Akt2 Phospho/Total – 2 Plex(Cat. No. 48-632MAG) AB2 ▼ * ●● **NON-CONFIGURABLE KIT**

Analyte	Total	Phosphorylated	
Akt2		✓ (Ser474)	H, M, R
Akt2	✓		H, M, R

CREB Phospho/Total – 2 Plex(Cat. No. 48-628MAG) AB2 ▼ ●● **NON-CONFIGURABLE KIT**

Analyte	Total	Phosphorylated	
CREB		✓ (Ser133)	H, M, R
CREB	✓		H, M, R

Erk/MAPK 1/2 Phospho/Total – 2 Plex(Cat. No. 48-619MAG) AB2 ▼ ●● **NON-CONFIGURABLE KIT**

Analyte	Total	Phosphorylated	
Erk/MAPK 1/2		✓ (Thr185/Tyr187)	H, M, R
Erk/MAPK 1/2	✓		H, M, R

JNK Phospho/Total – 2 Plex(Cat. No. 48-622MAG) AB2 ▼ ●● **NON-CONFIGURABLE KIT**

Analyte	Total	Phosphorylated	
JNK/SAPK1		✓ (Thr183/Tyr185)	H, M, R
JNK/SAPK1	✓		H, M, R

mTOR Phospho/Total – 2 Plex(Cat. No. 48-625MAG) AB2 ▼ ●● **NON-CONFIGURABLE KIT**

Analyte	Total	Phosphorylated	
mTOR		✓ (Ser2448)	H, M, R
mTOR	✓		H, M

p38 Phospho/Total – 2 Plex(Cat. No. 48-624MAG) AB1 or AB2 ▼ ●● **NON-CONFIGURABLE KIT**

Analyte	Total	Phosphorylated	
p38/SAPK2A/B		✓ (Thr180/Tyr182)	H, M, R
p38/SAPK2A/B	✓		H, M, R

STAT3 Phospho/Total – 2 Plex(Cat. No. 48-623MAG) AB2 ▼ ●● **NON-CONFIGURABLE KIT**

Analyte	Total	Phosphorylated	
STAT3		✓ (Tyr705)	H, M, R
STAT3	✓		H, M, R

MAPmate™ Singleplex Loading Control Assays

Plex loading control MAPmate™ assays into existing MILLIPLEX® Cell Signaling Panels. Our Cell Signaling Buffer and Detection Kit (Cat. No. 48-602MAG), may be purchased if additional buffers are required.

MAPmate™ Kits	Species Homology (Buffer)	Cat. No.
β-Tubulin (total)	H, M, R (AB1 & AB2)	46-713MAG
GAPDH (total)	H (AB2)	46-667MAG

- Can be plexed with other 2 Plexes
- * Cannot plex with other phospho Akt
- ▼ Premix panel only

AB1: Uses Assay Buffer 1
AB2: Uses Assay Buffer 2

H Human
M Mouse
R Rat

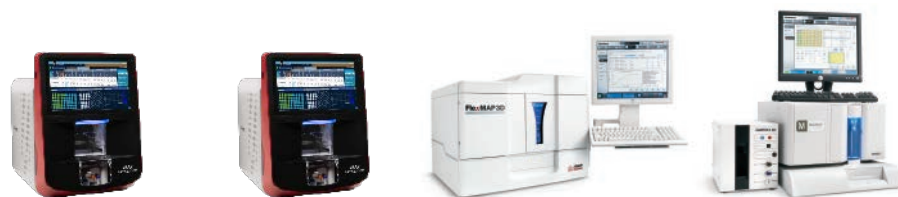
Luminex® Multiplexing Platforms

Driving Assay Consistency

Combined with the largest portfolio of multiplex analytes available, we provide you the power of Luminex® xMAP® technology, the most trusted, widely used platform for biomarker screening and protein analysis. As a Luminex® partner, we are a preferred distributor of Luminex® instruments, accessories, and software.

Luminex® xMAP® technology offers many advantages compared to other immunoassay methods:

- **Multiplexing:** Data generated simultaneously is less prone to user error, enabling the end-user to construct cleaner data sets to explore multiple parameters.
- **Low sample volume:** With minimal hands-on time, screen multiple analytes in a single sample using a maximum of 25 µL per well.
- **Magnetic bead-based format:** Responds rapidly and efficiently to a magnetic field, enabling better and faster washing techniques, including high-throughput washing options.
- **Reproducibility:** High-volume production of xMAP® microspheres allows assay standardization that solid-phased flat arrays cannot provide.
- **Speed/high-throughput:** Simultaneously measure the concentration of a large number of different analytes in a single sample, in 96- or 384-well format, to do your work faster, gaining early and comprehensive data.



Specifications

Instruments	xMAP® INTELLIFLEX® DR-SE*	xMAP® INTELLIFLEX®	FLEXMAP 3D®	Luminex® 200™
Cat. No.	INTELLIFLEX-DRSE	INTELLIFLEX-RU0	40-014	40-012
Optics Hardware	Lasers/APDs/PMTs	Lasers/APDs/PMTs	Lasers/APDs/PMTs	Lasers/APDs/PMTs
Technology	Flow-based	Flow-based	Flow-based	Flow-based
Multiplexing	Up to 500	Up to 500	Up to 500	Up to 100 (80 on MagPlex® microspheres)
Dynamic Range**	≥5.5 logs (RP1) ≥4.5 logs (RP2)	≥5.5 logs (RP1)	≥4.5 logs (RP1)	≥3.5 logs (RP1)
Read Time	96-well in ~20 min 384-well in ~75 min	96-well in ~20 min 384-well in ~75 min	96-well in ~20 min 384-well in ~75 min	96-well in ~45 min
Applications	Protein/nucleic acid	Protein/nucleic acid	Protein/nucleic acid	Protein/nucleic acid
Automation-Compatible Hardware	Front and side eject	Front eject only	Front eject only	Front eject only
Reporter Laser	532 nm (green) 405 nm (violet)	532 nm (green)	532 nm (green)	532 nm (green)
IQ/OQ	Yes	Yes	Yes	Yes
21 CFR Compliance	Yes	Yes	Yes	Yes
Automation	Yes	Yes	Yes	Yes
Data Analysis	Belysa® software	Belysa® software	xPONENT® basic + Belysa® software	xPONENT® basic + Belysa® software
Plate Format	96-well and 384-well	96-well and 384-well	96-well and 384-well	96-well
Footprint (Linear Bench Space, including PC)	58.4 cm x 61 cm x 6.2 cm	58.4 cm x 61 cm x 76.2 cm	110 cm x 62 cm x 63 cm	115 cm x 60 cm x 50 cm
Weight	54.4 kg (120 lbs)	54.4 kg (120 lbs)	77.1 kg (170 lbs)	49 kg (113 lbs)

*DR-SE = dual reporter side eject; **RP = reporter

Luminex® 200™ and FLEXMAP 3D® systems run on the Luminex® xPONENT® 4.3 data acquisition platform; the xMAP® INTELLIFLEX® systems run on INTELLIFLEX 1.0. All systems provide a consistent experience, from data input to results, no matter which instrument is used. All software adapts to fit the capabilities of each platform.

Choose the Best Multiplexing Platform for Your Research

Compare the four available Luminex® xMAP® technology instruments in detail at: SigmaAldrich.com/luminex

Critical Reagents Characterized for Consistency

Conferma® ELISAs

Conferma® ELISAs are developed with a focus on critical reagents to deliver assays with excellent detectability, sensitivity, and lot-to-lot consistency.

Three Key Factors

1. The standard protein: Produced in HEK293 cells to improve folding, the recombinant protein is evaluated using mass spectrometry (LC-MS, RP-LC-UV-MS) to compare the sequence coverage and mass with the recognized mature sequence of the target.

IL-6 Calibrator Lot 028M4878V matches with the reported IL-6 sequence from UniProt accession # P05231, AA30-212.

2. The monoclonal antibodies: Multiple clones are produced and evaluated with close consideration of the antibody affinity towards the standard as determined by Surface Plasmon Resonance (SPR).

Multiple lots of IL-8 capture and detection antibodies were evaluated against the standard (antigen) using SPR (Biacore™ system). All monoclonal antibodies selected for Conferma® kits have a K_D <2 nM which is considered high affinity.

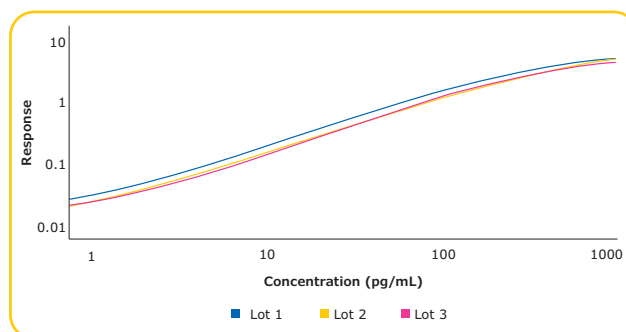
3. Lot-to-lot consistency: In addition to focusing on reagents, each assay batch is further verified at the finished kit level, comparing the standard curves for similarity and against a sample library (endogenous and spiked) to confirm they meet release criteria.

Three lots of TNF- α Conferma® ELISA kits were evaluated for consistency using mathematical parallelism with Belysa® software curve comparison results using Lot 1 as a reference against Lots 2 and 3. Mathematical variation between curves is considered perfect when parallelism is equal to 1.

Measured Mass by RP-LC-UV-MS: 20,977 Da

Sequence Coverage for Calibrator Lot 028M4878V
 VPPGEDSKDVAAPHRQPLTSSERIDKQIRYILDGISALRKETCNKSNMCESS
 KEALAENNLNLPKMAEKDGGCFQSGFNEETCLVKIITGLLEFVYLEYLQNRFE
 SSEEQARAVQMSTKVLIQFLQKKAKNLDAITTPDPTTNASLLTKLQAQNWLL
 QDMTTHLILRSFKEFLQSSLRALRQM

Sample	Antigen	K_D (nM)
IL-8 Capture Lot RB1907009	057M4835V	0.00062
IL-8 Capture Lot RB1901011	057M4835V	0.00041
IL-8 Capture Lot RB2003010	057M4835V	0.00086
IL-8 Detection Lot RB1907008	057M4835V	0.12
IL-8 Detection Lot RB1903010	057M4835V	0.15
IL-8 Detection Lot RB2003009	057M4835V	0.10
IL-8 Biotin Detection Lot RB1907008	057M4835V	0.08
IL-8 Biotin Detection Lot RB1903010	057M4835V	0.12
IL-8 Biotin Detection Lot RB2003009	057M4835V	0.16



Curve	Parallelism
Lot 2 vs. Lot 1	0.983
Lot 3 vs. Lot 1	0.992

Conferma® ELISAs

Analyte	Std. Range (pg/mL)	LLOQ (Curve) (pg/mL)	Cat. No.
IL-6 (Human) NEW	1.17 - 150	1.17	EZIL6-98K
IL-8 (Human) NEW	0.82 - 200	0.82	EZHIL8-100K
MCP-1 (Human) NEW	7.81 - 1,000	7.81	EZMCP1-99KRM
TNF- α (Human) NEW	1.65 - 400	1.65	EZHTNFA-150K

Millipore® Brand ELISAs

Metabolic/Endocrine/ Cytokine ELISAs	Species	Standard Curve Range	Sensitivity	Sample Volume	Cat. No.	Bulk Packaging Cat. No.*
Adiponectin	Human	1.56–200 ng/mL	0.2 ng/mL	10 µL	EZHADP-61K	EZHADP-61BK
Adiponectin (High Molecular Weight)	Human	1.5–200 ng/mL	0.5 ng/mL	10 µL	EZHMWAN-65K	
Adiponectin	Mouse	1–50 ng/mL	0.2 ng/mL	10 µL	EZMADP-60K	EZMADP-60BK
Adiponectin	Rat	3.125–200 ng/mL	0.4 ng/mL	10 µL	EZRADP-62K	
Amylin (active)	Human	1–100 pM	0.7 pM	50 µL	EZHA-52K	
C-Peptide	Human	0.2–20 ng/mL	0.05 ng/mL	10 µL	EZHCP-20K	EZHCP-20BK
C-Peptide	Canine	0.2–10 ng/mL	0.24 ng/mL	25 µL	EZCCP-47K	
C-Peptide 2	Mouse, Rat	25–1600 pM	15.0 pM	20 µL	EZRMCP2-21K	
C-Reactive Protein (CRP)	Human	0.12–10 ng/mL	0.2 ng/mL	2 µL	CYT298	
C-Reactive Protein (CRP)	Rat	4.9–10 ng/mL	2.5 ng/mL	2 µL	CYT294	
FGF-21	Human	31.25–2000 pg/mL	10.0 pg/mL	50 µL	EZHFGF21-19K	
FGF-21	Mouse, Rat	49.4–12,000 pg/mL	10.0 pg/mL	10 µL	EZRMFGF21-26K	
FGF-23	Human	9.9–2400 pg/mL	3.5 pg/mL	50 µL	EZHFGF23-32K	EZHFGF23-32BK
Ghrelin (active)	Human	25–2000 pg/mL	15.0 pg/mL	20 µL	EZGRA-88K	EZGRA-88BK
Ghrelin (active)	Mouse, Rat	25–2000 pg/mL	8.0 pg/mL	20 µL	EZRGRA-90K	
Ghrelin (total)	Human	100–5000 pg/mL	50.0 pg/mL	20 µL	EZGRT-89K	EZGRT-89BK
Ghrelin (total)	Mouse, Rat	0.1–10 ng/mL	0.04 ng/mL	20 µL	EZRGR-91K	
GIP (total)	Human	8.2–2000 pg/mL	4.2 pg/mL	20 µL	EZHGIP-54K	EZHGIP-54BK
GIP (total)	Mouse, Rat	8.2–2000 pg/mL	4.2 pg/mL	10 µL	EZRMGIP-55K	EZRMGIP-55BK
GLP-1 (active)	Multi-Species	2–100 pM	1.0 pM	100 µL	EGLP-35K	EGLP-35BK
GLP-1 High Sensitivity (active) Δ••	Multi-Species	See data sheet	0.14 pM	50 µL	EZGLPHS-35K	EZGLPHS-35BK
GLP-1 (total)	Multi-Species	4.1–1000 pM	1.0 pM	20–50 µL	EZGLP1T-36K	EZGLP1T-36BK
GLP-2	Multi-Species	1–64 ng/mL	0.3 ng/mL	50 µL	EZGLP2-37K	
Glucagon Δ	Human, Mouse, Rat	0.02–2 ng/mL	0.003 ng/mL	150–300 µL	EZGLU-30K	EZGLU-30BK
Growth Hormone (GH)	Mouse, Rat	0.7–50 ng/mL	0.07 ng/mL	10 µL	EZRMGH-45K	EZRMGH-45BK
IL-6 NEW	Human	1.17–150 pg/mL	1.17 pg/mL	50 µL	EZIL6-98K	EZIL6-98K10PK
IL-8 NEW	Human	0.82–200 pg/mL	0.8 pg/mL	50 µL	EZHIL8-100K	EZHIL8-100K10PK
Insulin	Human	2–200 µU/mL	1.0 µU/mL	20 µL	EZHI-14K	EZHI-14BK
Insulin	Mouse, Rat	0.2–10 ng/mL	0.1 ng/mL	10 µL	EZRMI-13K	EZRMI-13BK
Leptin	Canine	0.78–50 ng/mL	0.21 ng/mL	20 µL	EZCL-31K	
Leptin	Mouse	0.2–30 ng/mL	0.05 ng/mL	10 µL	EZML-82K	EZML-82BK
Leptin	Rat	0.2–30 ng/mL	0.08 ng/mL	10 µL	EZRL-83K	EZRL-83BK
Leptin “Dual Range”	Human	0.5–100 ng/mL	0.2 ng/mL	25 µL	EZHL-80SK	EZHL-80BK
MCP-1 NEW	Human	7.18–1000 pg/mL	7.18 pg/mL	10 µL (1:5 dilution)	EZMCP1-99KRM	EZMCP1-99K10PKRM
Procollagen Type IIA N-Propeptide (PIIANP)	Human	lot dependent	30.0 ng/mL	5 µL	EZPIIANP-53K	
Proinsulin (total)	Human	2–200 pM	0.5 pM	20 µL	EZHPI-15K	EZHPI-15BK
PYY (total)	Human	10–2000 pg/mL	6.5 pg/mL	20 µL	EZHPLYT66K	
Resistin	Human	0.16–5 ng/mL	0.02 ng/mL	20 µL	EZHR-95K	EZHR-95BK
SAA-3	Mouse	0.078–5 µg/mL	0.078 µg/mL	10 µL	EZMSAA3-12K	
TNF-α NEW	Human	1.65–400 pg/mL	1.65 pg/mL	50 µL	EZHTNFA-150K	EZHTNFA-150K10PK

* Bulk packaging available on select kits — more environmentally friendly and saves space (10 kit equivalent)

•• Preferred assay for measuring GLP-1 (active)

Δ Chemiluminescent assay

Millipore® Brand ELISAs & RIAs

Neuroscience ELISAs	Species	Standard Curve Range	Sensitivity	Sample Volume	Cat. No.
Amyloid beta 1-40	Human	16–500 pg/mL	4 pg/mL	50 µL	EZHS40
Amyloid beta 1-42	Human	16–500 pg/mL	5 pg/mL	50 µL	EZHS42
Amyloid beta, Set	Human	Contains 1 each of EZHS40 and EZHS42			EZHS-SET
Amyloid beta (Brain) 1-40	Human	16–500 pg/mL	4 pg/mL	50 µL	EZBRAIN40
Amyloid beta (Brain) 1-42	Human	16–500 pg/mL	5 pg/mL	50 µL	EZBRAIN42
Amyloid beta (Brain), Set	Human	Contains 1 each of EZBRAIN40 and EZBRAIN42			EZBRAIN-SET
BDNF (Brain-Derived Neurotrophic Factor)	Human, Rat	7.8–500 pg/mL	7.8 pg/mL	50 µL	CYT306
GFAP (Glial Fibrillary Acidic Protein)	Human, Mouse, Rat	1.5–100 ng/mL	1.5 ng/mL	100 µL	NS830
NPY (Neuropeptide Y)	Human	5–1,000 pg/mL	2 pg/mL	50 µL	EZHNPY-25K
NPY (Neuropeptide Y)	Mouse, Rat	0.01–2 ng/mL	0.004 ng/mL	20 µL	EZRMNPY-27K
PEDF (Pigment Epithelium-Derived Factor)	Human	0.9–62.5 ng/mL	0.9 ng/mL	50 µL	CYT420
Phosphorylated Neurofilament, (pNF-H) Sandwich	Multi-Species	0.0293–15 ng/mL	0.0585 ng/mL	1–10 µL	NS170
S100B	Human	2.7–2,000 pg/mL	1.3 pg/mL	50 µL	EZHS100B-33K
RIAs	Species	Standard Curve Range	Sensitivity	Sample Volume	Cat. No.
Adiponectin	Human	lot dependent	1 ng/mL	5 µL	HADP-61HK
C-Peptide	Canine	0.156–20 ng/mL	0.15 ng/mL	50 µL	CCP-24HK
C-Peptide	Human	0.1–5 ng/mL	0.1 ng/mL	50 µL	HCP-20K
Ghrelin (active)	Human	lot dependent	7.8 pg/mL	50 µL	GHRA-88HK
Ghrelin (total)	Human	lot dependent	93 pg/mL	50 µL	GHRT-89HK
GLP-1 (active)	Multi-Species	10–500 pM	3 pM	300 µL	GLP1A-35HK
GLP-1 (total)	Multi-Species	10–1,000 pM	3 pM	300 µL	GLP1T-36HK
Glucagon	Multi-Species	20–400 pg/mL	20 pg/mL	50 µL	GL-32K
Insulin	Porcine	2–200 µU/mL	2 µU/mL	50 µL	PI-12K
Insulin	Rat	0.1–10 ng/mL	0.1 ng/mL	50 µL	RI-13K
Insulin (sensitive)	Rat	0.02–1 ng/mL	0.02 ng/mL	50 µL	SRI-13K
Insulin Specific	Human	2–200 µU/mL	2 µU/mL	50 µL	HI-14K
Leptin	Human	0.5–100 ng/mL	0.5 ng/mL	50–100 µL	HL-81K
Leptin	Multi-Species	1–50 ng/mL	1 ng/mL	50 µL	XL-85K
Proinsulin	Human	2–100 pM	2 pM	100–200 µL	HPI-15K
PYY (3-36)	Human	lot dependent	20 pg/mL	<100 µL	PYY-67HK
PYY (total)	Human	lot dependent	10 pg/mL	<100 µL	PYYT-66HK

Sigma-Aldrich® Brand ELISAs

We offer a portfolio of >1,300 ELISAs and EIAs, covering a diverse range of species, research areas, and sample types. Find your ELISA at [SigmaAldrich.com/elisa](https://www.sigmaaldrich.com/elisa)

Make the Most of Your Immunoassays

Ancillary Equipment to Optimize Your Assays

We offer washers and readers from Agilent (BioTek® instruments) to support all of our platforms.

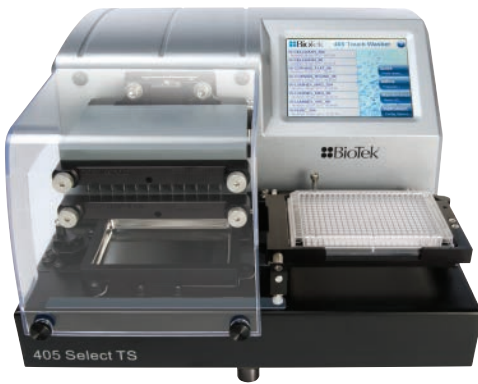
BioTek® 405™ TSUVS Magnetic 96-Well Washer for SMC® Assays



This fully automated system is designed to quickly wash an entire plate through biomagnetic separation, washing, and vacuum filtration. The system comes specifically optimized for use with SMC® assays with the inclusion of a specially designed magnetic plate and customized pre-programmed plate washing protocols. The 405™ TSUVS model offers an easy-to-use and glove touchable screen.

Description	Cat. No.
BioTek® 405™ TSUVS Magnetic 96-Well Washer Complete with Touch Screen and Ultrasonic Cleaning for SMC® Assays	95-0004-05
SMC® Plate Washer Evaluation Kit	03-0165-00

BioTek® Washing & Dispensing Solutions for MILLIPLEX® Assays



The MultiFlo™ FX dispenser allows users to dispense kit reagents, ensuring excellent assay reproducibility.

BioTek® washer advantages:

- Fast and hands-free full plate washing
- This washer includes an intuitive touch-screen user interface and the Ultrasonic Advantage™ cleaning program for easy washing of the toughest sample types

Description	Cat. No.
BioTek® 405™ TS Magnetic 96-Well Washer Complete with Touch Screen and Ultrasonic Cleaning	40-092AB

Other Washers and ELISA Readers

Description	Cat. No.
BioTek® 50™ Magnetic 96-Well Strip Washer	40-301
BioTek® 800™ TS Absorbance Reader with Gen5™ Software	40-006
Handheld Magnetic Bead Washer Separator Block for 96-Well Flat Bottom or Conical Well Plates	40-285

Enhance Your Workflows

Explore BioTek® washers for our platforms at SigmaAldrich.com/smc-washer and SigmaAldrich.com/milliplex-washer

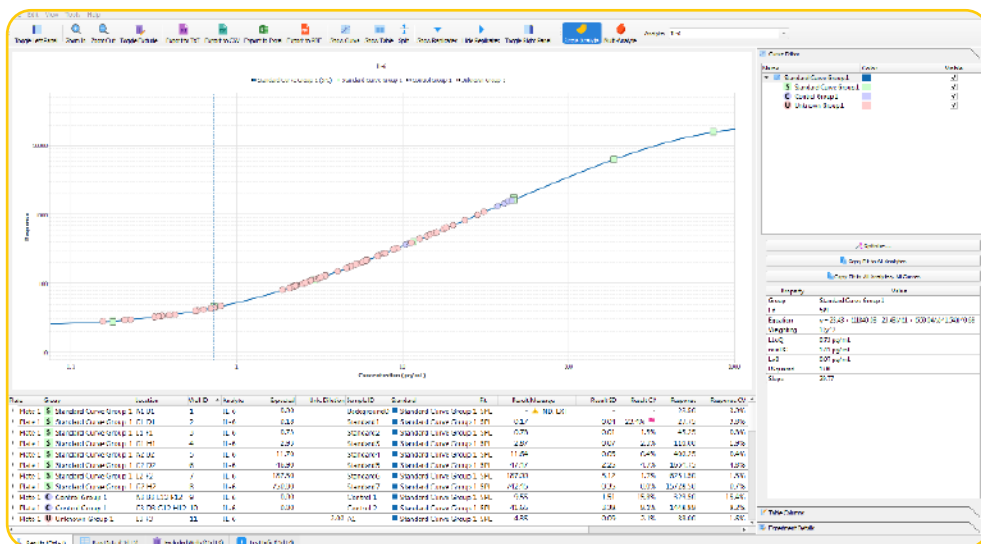
Belysa® Immunoassay Curve Fitting Software

(Cat. No. 40-122)

Our newest proprietary software package for curve fitting, examination, and comparison of data acquired from a variety of immunoassay platforms. Belysa® software has been designed to provide an easy-to-use tool to optimize curve fit and confirm the integrity of data within a plate or across plates from multiple runs.

Key Features and Benefits

- User-friendly interface
- Automatic and manual curve fitting (4pl, 5pl, linear, competitive, cubic spline)
- Curve comparison tools
- Rules-based data flagging
- Suitable for use with RUO Luminex® instruments, SMCxPRO® platform, and ELISA .csv acquisition files
- Windows 10 and macOS (beta) compatible



Example 1. Belysa® standard curve and data analysis: IL-6 MILLIPLEX® assay from a Luminex® xPONENT®.csv output file.

As shown in Example 1, a .csv output file is simply drag-and-dropped into the Belysa® browser for instant data review.

Once the user selects the curve fit model, either automatically by using the wizard, or manually, the data are displayed:

- Sample concentrations
- Recovery of standards
- Equation of line
- Limit of Detection (LOD)
- Lower Limit of Quantitation (LLOQ)
- Minimum Detectable Dose (MD)
- Data is exportable to: Excel, .csv, .txt, and .pdf



Data Autoflagging

Message	Result SD	Result CV	Response	Response CV
▲ EXT, ND	-	-	15.75	2.2%
▲ BLOQ	0.03	3.6%	35.50	2.0%
▲ BLOQ	0.08	10.4%	32.75	5.4%
▲ BLOQ	0.13	16.4%	33.00	8.6%
▲ BLOQ	0.03	6.0%	27.50	2.6%
▲ BLOQ	0.03	3.8%	34.50	2.0%
▲ BLOQ	0.03	4.2%	32.50	2.2%
▲ BLOQ	0.03	3.4%	36.50	1.9%
▲ BLOQ	0.18	25.9%	30.75	12.6%
▲ BLOQ	0.00	0.0%	23.00	0.0%
▲ BLOQ	0.05	13.3%	23.75	4.5%
▲ BLOQ	0.06	27.1%	21.00	6.7%
▲ BLOQ	0.03	10.5%	22.50	3.1%
▲ BLOQ	0.10	10.7%	35.50	6.0%

As shown in Example 2, Belysa® software annotates data for hard rules such as below the limit of quantitation (BLOQ) using a yellow triangle. The user may define parameters such as acceptable %CV or bead counts which creates a pink flag next to the raw data that does not meet the user's acceptance criteria. Then, a decision can be made to exclude points which will then be recorded if required for review.

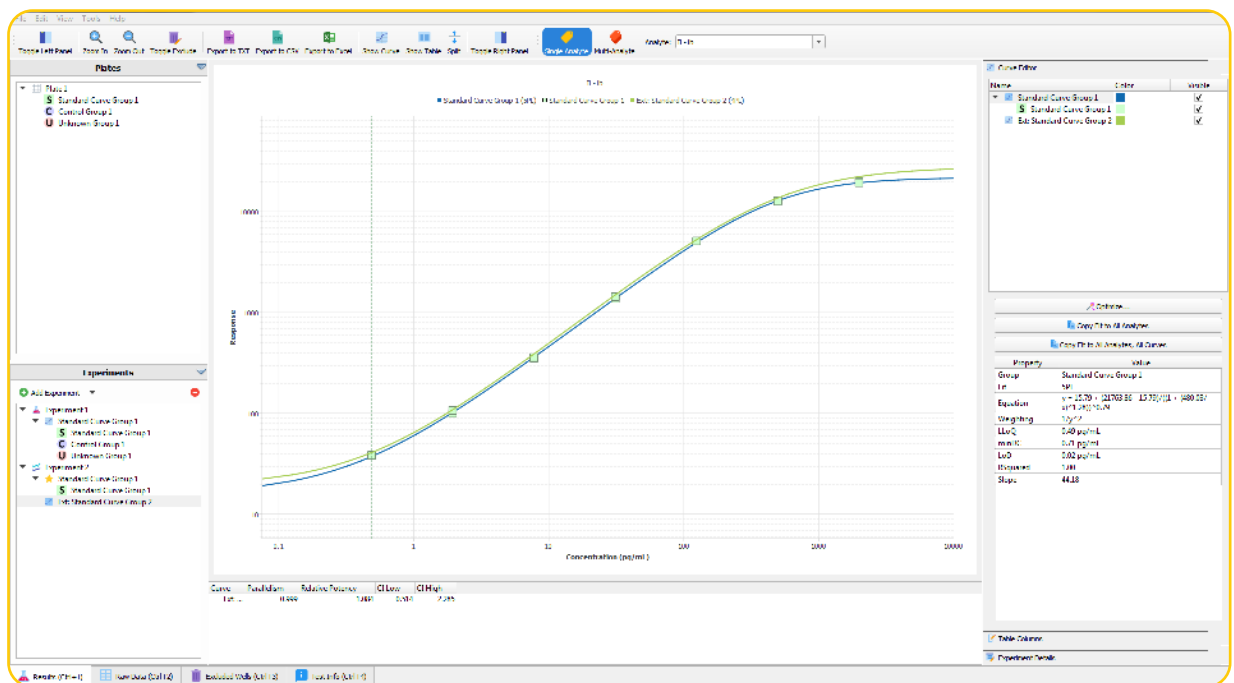
Example 2. Belysa® data annotation: below LLOQ (yellow triangle), %CV (pink flags).

Belysa® Software Curve Comparison Tool

Comparing standard curves can provide crucial information on the reproducibility of an assay over multiple plates within specific runs or over the course of a longitudinal study. As shown in Example 3, Belysa® software provides a curve comparison tool for multiple curves imported from previously saved Belysa® output files. The first curve is used as a reference against which each subsequent curve is compared.

Comparison tests across multiple runs:

- Parallelism
- Relative potency of standards



Example 3. Comparison of two standard curves in Belysa® software from two lots of the same MILLIPLEX® assay run 1 year apart.

CADI: Custom Assay Development & Innovation

Accelerate your research with custom SMC®, MILLIPLEX®, and ELISA assays designed for your specific biomarker needs.

We understand you don't always have the time, resources, or expertise to develop your own assay for your protein of interest. Rely on our vast development expertise and our ability to produce high-quality, reproducible immunoassays to help you accelerate your program from discovery research into clinical trials with a custom-designed solution.



Get started today!
View a complete listing of services at SigmaAldrich.com/customassay

Fit-For-Purpose Custom Assay Project Workflow

Develop a new SMC®, MILLIPLEX®, or ELISA assay which is fit for your purpose. We follow a milestone-based approach to generate an assay that quantifies your exact protein or proteins of interest. You will receive updates and data reviews during each milestone, offering you peace of mind that your project is on schedule and meeting specifications.



Example Custom Assay Offerings

Cat. No.	Description	Description
SPRCUS1014	Custom Human 384-Well Circulating Cancer Biomarker Panel 3 8-Plex	H (S/P, Sup, Lys)
SPRCUS1016	Custom Human 384-Well Angiogenesis Panel 2 20-Plex	H (S/P, Sup, Lys)
SPRCUS1042	Custom Human 384-Well Immuno-Oncology Checkpoint Protein Panel 17-Plex	H (S/P, Sup)

Custom MILLIPLEX® Analytes

Analyte	Species (Sample Types)
α-1 Antichymotrypsin	H (S/P)
α-2 Antiplasmin	H (S/P)
AGP (α 1-Acid Glycoprotein)	H (U)
Angiopoetin-1	H (S/P, T)
Anti-Cardiolipin antibody IgA	H (S/P)
Anti-EBV VCA IgG	H (S/P)
Anti-Phosphatidylserine IgG, IgM	H (S/P)
Antithrombin iii	H (S/P, Sup, Lys)
Apolipoprotein A-IV	H (S/P)
Arginase 1	M (S/P)
AXL (s)	M, R (S/P)
BAD (Ser112)	H, M (Lys)**
BCMA (B-cell Maturation Antigen)	H (S/P)
BMP-9	M, R (S/P)
BRD4	H, M, R (Lys)
Caspase 3 (Active)	H, M (Lys)**
CBP	H, M, R (Lys)
CD13 Aminopeptidase N	H (S/P)
CD163 (s)	H (S/P)
Ceruloplasmin	H (U)
Cleaved PARP (total)	H (Lys)**
CSTB (Cystatin B)	H (S/P)
Elafin	H (S/P)
ERK/MAPK 1/2 (Thr185/Tyr187)	H, M, R (Lys)**
ERK/MAPK 1/2 (total)	H, M, R (Lys)**
Extracellular Matrix Protein (ECM1)	H (S/P, Sup, Lys)
FGF-23	M (S/P, Sup)
Fibronectin	H (S/P)
G3BP (Galectin 3 Binding Protein)	H (U)
Gas-6	H, M, R (S/P)
Granzyme A	M (S/P)
Gremlin	M, R (S/P)
GRP78	H (S/P)
HGFR/cMET	M, R (S/P)
I-FABP	H (S/P)
IGF-1	M, R (S/P)

Analyte	Species (Sample Types)
IL-18	M, R (S/P)
IL-33R/ST2 (Suppressor of Tumorigenicity 2)	H (S/P)
Insulin	F (S/P)
Involucrin	H (S/P)
IRS1 (Ser133)	H, M, R (S/P)
IRS1 (total)	H, M, R (S/P)
Keratin-1,10	H (S/P)
Keratin-6	H (S/P)
LPGDS (Lipocalin like prostaglandin D synthase)	H (U)
Lysozyme C	H (S/P)
MIP-1γ	M, R (S/P)
MR-proADM	H (S/P)
Osteoprotegerin (OPG)	M (S/P, Sup)
p300	H, M, R (Lys)
p38/SAPK2A/B (Thr180/Tyr182)	H, M, R (Lys)**
p38/SAPK2A/B (total)	H, M, R (Lys)**
Periostin	M, R (S/P)
PODXL	M, R (S/P)
Prealbumin (Transthyretin)	H (S/P)
Procalcitonin	H, M, R (S/P)
Prostaglandin D Synthase (lipocalin-type)	H (S/P, CSF, Sup)
Sclerostin (SOST)	M (S/P, Sup)
Semaphorin 3A	H (Sup)
STAT1 (total)	H, M (Lys)**
Tenascin C	M, R (S/P)
Thyroxine Binding Globulin	H (S/P)
TRAIL	M, R (S/P)
Transferrin	H (U)
Vasopressin	M, R (P)
VE Cadherin/Cadherin 5	H (S/P)
Vitamin D Binding Protein	H (S/P, Sup, Lys)
Vitronectin	M, R (S/P)
Wnt-3a	H (S/P, Sup, Lys)
Zinc-α-2 Glycoprotein	H (S/P)

Species Key

H Human
M Mouse
R Rat
F Feline

Sample Type Key

CSF Cerebral Spinal Fluid
Lys Cell/Tissue Lysates
Mul Multiple Types
S/P Serum/Plasma
Sup Cell/Tissue Culture Supernatants
T Tears
U Urine

Notations

s Soluble analyte
****** No standard/QC; levels reported as MFIs (Median Fluorescence Intensities)

Beyond the Assay Development Workflow

In addition to our assay development services, we can support your other custom assay needs.

Our additional capabilities include:

Switching Formats

- MILLIPLEX® Assays: 96-well to 384-well
- SMC® Assays: bead-based to plate-based
- Converting MILLIPLEX® assays to SMC® assay platform

Sample Testing

- Prototype sample testing
- Proprietary kit sample testing (SMC® assays only)
- SMC® immunoassay kit testing (SMC® assays only)

Biotherapeutic Assay Development

- Pharmacokinetics
- Pharmacodynamics
- Immunogenicity

SMCxPlore™ Proof of Concept Sample Testing:

Use our SMCxPlore™ proof of concept sample testing service to “explore” SMC® technology with your analyte of interest or critical samples. Test up to 30 of your critical samples using one of our highly verified SMC® immunoassays.



A large area of the page is filled with horizontal light blue lines, providing a space for handwritten notes.

Quality in Every Kit

Assay performance data is included in every protocol, so you can discover with confidence

Rigorous Assay Development

Specificity

- Antibody specificity is tested to ensure negligible cross-reactivity in the tested sample types
- Assay specificity is ensured by confirming consistent performance in singleplex and multiplex formats

Method Comparisons

- We test our kits against in-house kits and kits from other vendors when available, ensuring the highest performing kits

Selectivity

- Assay buffers and bead diluents are optimized to enhance antibody binding to only those analytes of interest in samples

Detection and Sensitivity

- The assay range and minimum detectible concentrations (minDCs or LLOQ) for each analyte is published in our protocols, and is based on actual samples

Performance in a Sample Matrix

- Assays are verified for the sample type noted in the protocol; for serum/plasma sample kits, we provide an optimized serum matrix to mimic the environment of the sample, normalizing assay performance

We'll help you choose the right platform and assays to meet your needs today, and we'll partner with you to meet those needs in the future — without compromising quality.

Reproducible Results You Can Trust

Stability

- All kits are rigorously tested for shipping stability to determine impact on each analyte
- Sample stability is examined at a range of temperatures, and by freeze/thaw

Precision and Accuracy

- Precision of control standards are typically within 15% CV for intra-assay and 20% CV for inter-assay
- Spike recovery in sample is performed for each analyte at three concentrations; accuracy is normally within $\pm 30\%$

Linearity of Dilution

- Diluted sample results must be directly proportional to the concentration of analyte in the sample, typically within $\pm 30\%$

Lot-to-Lot Consistency

- A "gold standard" calibrator is defined during assay development and used as a reference for all future production lots



Millipore®

Preparation, Separation,
Filtration & Monitoring Products

Merck KGaA
Frankfurter Strasse 250
64293 Darmstadt, Germany

SigmaAldrich.com



Scan to download a digital copy.

**To place an order or receive technical assistance in Europe,
please call Customer Service:**

France: 0825 045 645
Germany: 069 86798021
Italy: 848 845 645

Spain: 901 516 645 Option 1
Switzerland: 0848 645 645
United Kingdom: 0870 900 4645

For other countries across Europe, please call: +44 (0) 115 943 0840

Or visit: SigmaAldrich.com/offices

For Technical Service visit: SigmaAldrich.com/techservice

We have built a unique collection of life science brands with
unrivalled experience in supporting your scientific advancements.

Millipore® Sigma-Aldrich® Supelco® Milli-Q® SAFC® BioReliance®

© 2022 Merck KGaA, Darmstadt, Germany and/or its affiliates. All Rights Reserved. Merck, the vibrant M, Millipore, Sigma-Aldrich, Supelco, Milli-Q, SAFC, BioReliance, MILLIPLEX, MAPmate, SMCxPRO, Belysa, and Conferma are trademarks of Merck KGaA, Darmstadt, Germany or its affiliates. All other trademarks are the property of their respective owners. Detailed information on trademarks is available via publicly accessible resources.