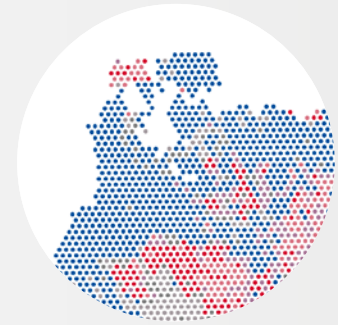


Spatial Transcriptomics Services



Overview

Indivumed offers the whole workflow for your Spatial Transcriptomics needs to overcome the lack of morphological information of gene expression data within bulk RNA analysis. We implemented the “Visium Spatial Gene Expression” Solution from 10x Genomics offering:

- Analysis of the total transcriptome in the morphological context with just one tissue section
- High-resolution view of gene expression variability in the tissue of interest
- Combination with our high-quality, low-ischemia time tissue samples from our clinical network

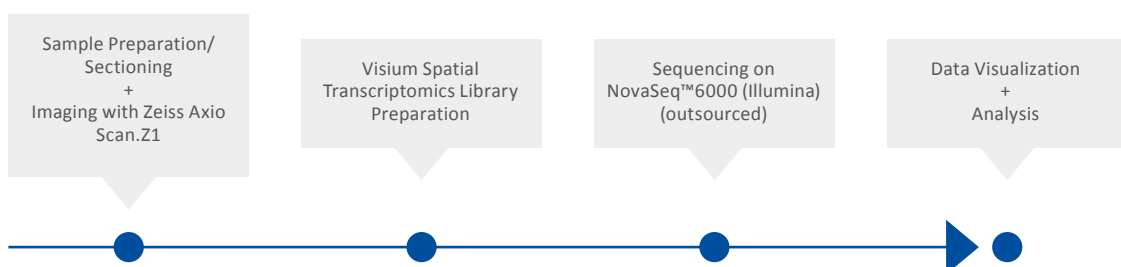
End-to-end solution: Spatial Transcriptomics Service workflow at Indivumed

- 1| Sample preparation/sectioning of Fresh Frozen (FF) tissue samples; Formalin-fixed paraffin-embedded (FFPE) tissue samples possible on request
- 2| Visium Spatial Tissue Optimization to determine optimal conditions for each tissue entity and sample type entering the Visium Spatial Gene Expression Workflow
- 3| Visium Spatial Gene Expression Workflow including sequencing as well as data visualization and analysis

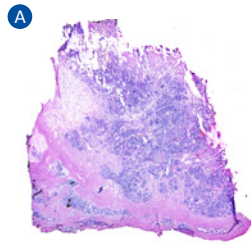
Your Benefits



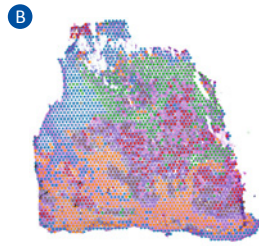
- 10x Genomics Certified Service Provider for Spatial Gene Expression Solution
- Scientific support throughout the entire spatial transcriptomics workflow
- Easy to interpret results
- Get a quick answer on differentiated gene expression
- Reliable and scientifically proven technology
- All data files provided for individual processing
- Save valuable biological material



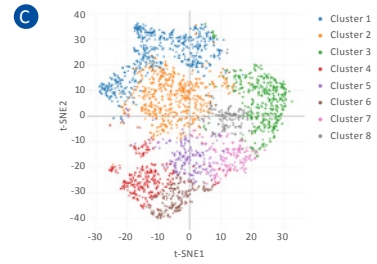
From morphological view to spatially-resolved cluster analysis and target gene expression



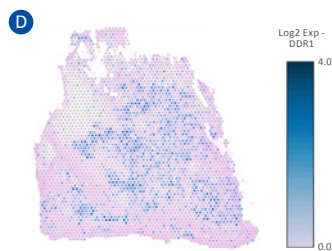
H&E image – morphological view of NSCLC tumor tissue section



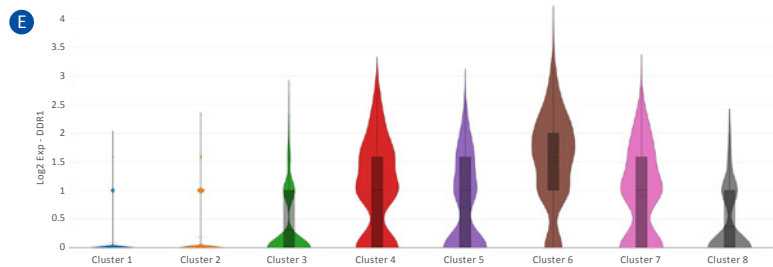
Spatial view – gene expression data displayed as clusters identified by differentially expressed genes



t-SNE projection of identified clusters, t-distributed stochastic neighbor embedding a probabilistic method for visualizing high dimensional data



Spatial view DDR1 (Discoidin Domain Receptor Tyrosine Kinase 1) – gene expression of DDR1 is shown in the spatial context



Violin Plot DDR1 (Discoidin Domain Receptor Tyrosine Kinase 1) – Log₂ gene expression of DDR1 within identified clusters is shown

Combined and Complementary Services

- High-quality biospecimens from Individumed's Biobank
- Histopathological evaluation by in-house pathologists
- Immunohistochemistry (IHC) and/or Fluorescent Multiplex IHC
- Laser Capture Microdissection (LCM)
- Combine transcriptomic insights with our multi-omics data from our global cancer data platform "IndivuType"

About Individumed

Individumed GmbH is a physician-led, integrated global oncology company for personalized medicine with the world's premier high-content tumor database and highest quality biobank. Individumed's standard operating procedures are trusted as the global benchmark for biospecimen and clinical data collection.

Our long-standing biobanking expertise is ISO 9001-certified and includes strict protocols for tissue sampling and processing with regard to crucial parameters such as tumor region, ischemia time, and information management.

Contact

Europe Tel.: +49 (40) 41 33 83 18

USA Tel.: +1 (301) 228 9739

Email: CustServ@individumed.com

www.individumed.com