



ThermoFisher
SCIENTIFIC



Tell your tissues: no more secrets

Introducing the EVOS S1000
Spatial Imaging System



invitrogen

Breaking into spatial biology is easier than you think

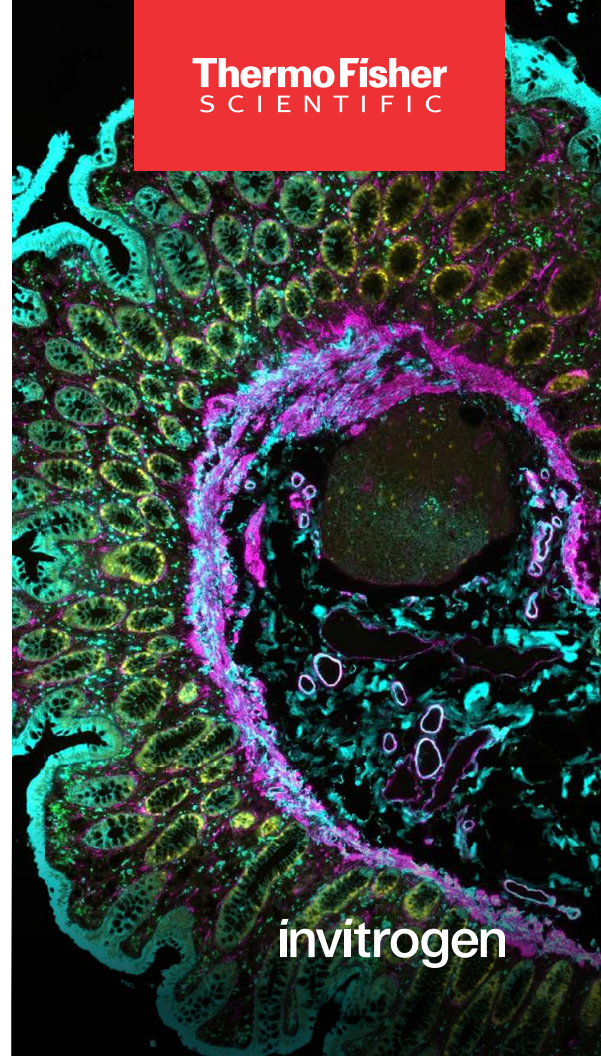
The Invitrogen™ EVOS™ S1000 Spatial Imaging System can complete the imaging process quickly while generating a fully stitched, unmixed, multiplexed image for multiple samples. Features include:

- Easily multiplex up to 8 targets plus DAPI in a single round
- Use spectral fluorescence, transmitted brightfield, and phase and color brightfield in one instrument
- Scan multiple tissues on a single slide, with capacity for 4 slides
- Powerful autofocus, with custom IR laser and software routines
- High-sensitivity sCMOS camera can visualize intricate tissue architecture
- Single operating software offers fast overview scans, periscope mode for tissue navigation, spectral unmixing, and whole-slide stitching and imaging



 To sign up for a demo, go to
thermofisher.com/evoss1000

For Research Use Only. Not for use in diagnostic procedures. © 2024 Thermo Fisher Scientific Inc. All rights reserved.
All trademarks are the property of Thermo Fisher Scientific and its subsidiaries unless otherwise specified. COL123130 0824



invitrogen