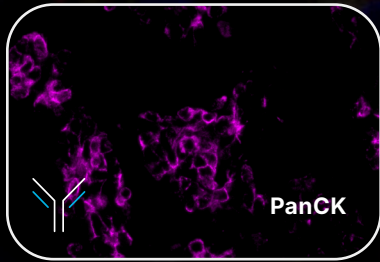
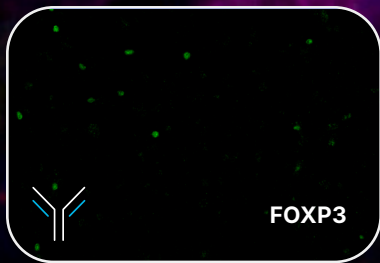
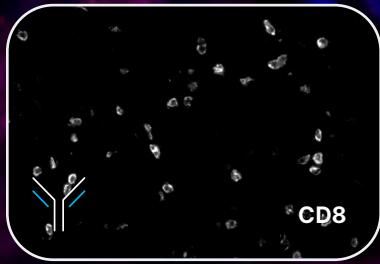
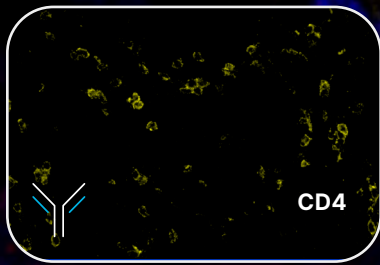


COMING SOON

# RNAscope™ Multiomic LS Assay





Human Cervical Cancer

# Visualize cell phenotypes and function with **single-section spatial multiomics**.

The RNAscope™ Multiomic LS Assay enables highly sensitive and specific detection of both RNA and proteins in the same tissue section for a true multiomic spatial assay. With automation on the BOND RX, you can easily scale studies to achieve your project goals.

# 6

**RNA OR**  
**Protein + RNA OR**  
**Protein**



#### Optimized multiomic workflow

- Robust RNAscope Multiplex TSA chemistry for both RNA and protein detection.
- Protease-free workflow preserves antigen integrity and tissue morphology.
- Same-slide H&E staining.



#### Gold-standard RNAscope detection

- Proven performance for FFPE samples and high to low expressing target genes.
- Backed by 10K publications.
- Over 50K probes visualized.

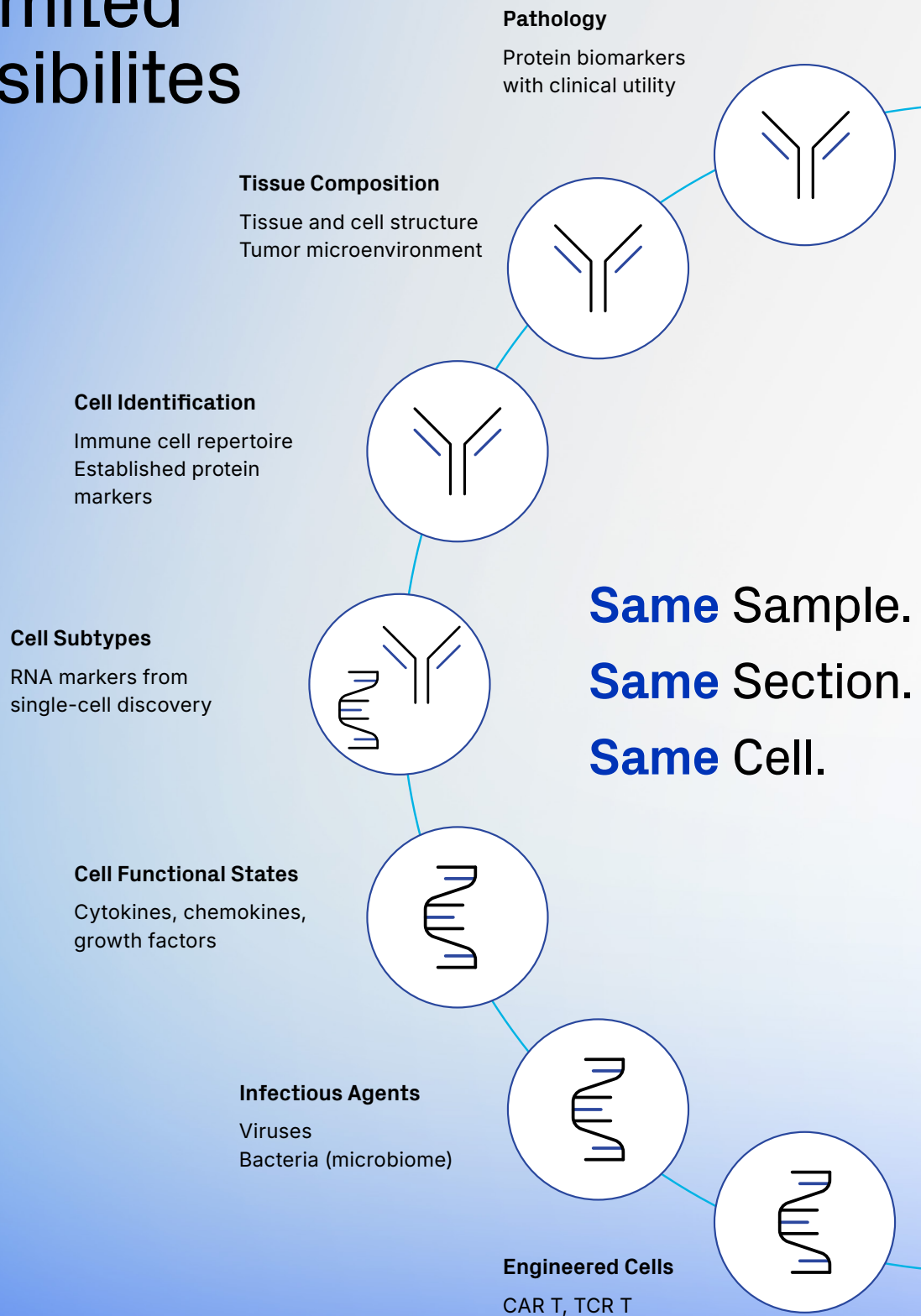


#### Fast and flexible assay design

- Unlimited RNA targets. Any gene. Any species.
- Easily add up to 2 of your own unconjugated antibodies.
- Expand protein plex up to 6 with ready-to-use antibodies to immune markers.

On the cover: Human breast cancer tissue detected for CD4, CD8a, PanCK, and FoxP3 proteins and for interferon gamma and granzyme B transcripts.

# Unlimited Possibilities



# Fast and flexible assay design

Get answers quickly to achieve your project goals.

## Oncology and Immuno-oncology

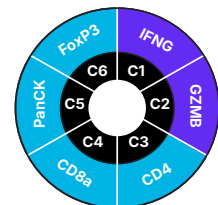
Easily combine up to 4 pre-conjugated antibodies to the most common human protein targets with your own unconjugated primary antibodies or RNA probes to interrogate the tumor microenvironment.



CD4  
CD8  
FoxP3  
PanCK



Any 2  
Proteins  
or RNAs

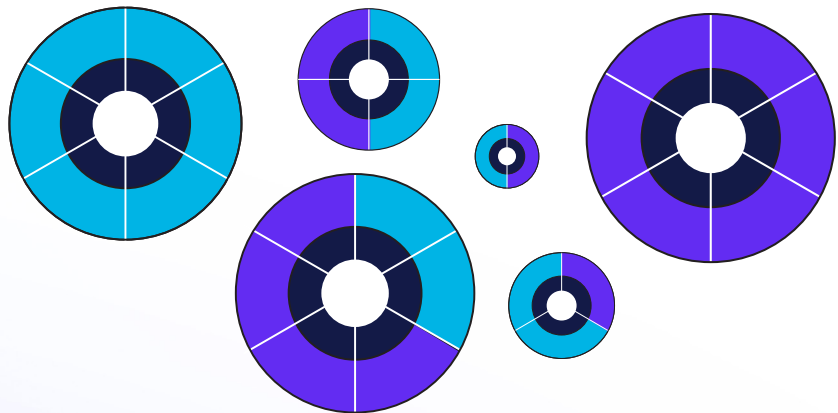


Common RNA markers include:

CAR-T | Checkpoints | Cytokines & Chemokines |  
Activation & Exhaustion

## Mix and match for unlimited flexibility

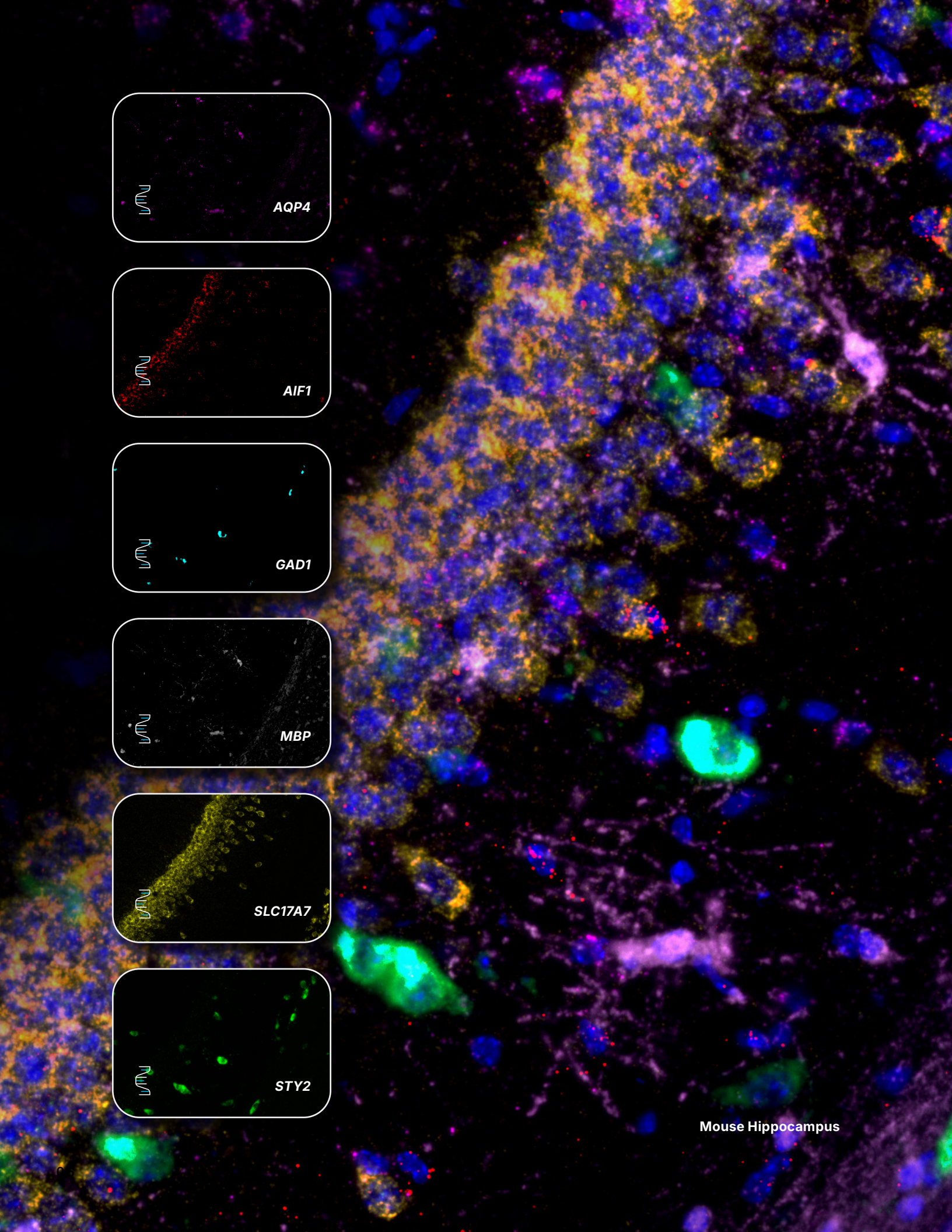
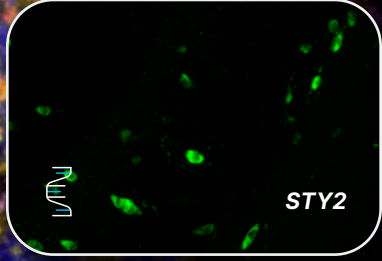
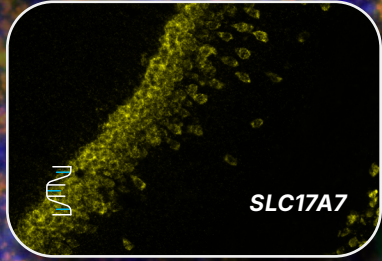
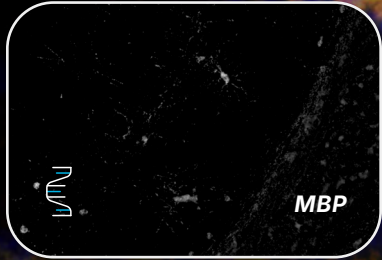
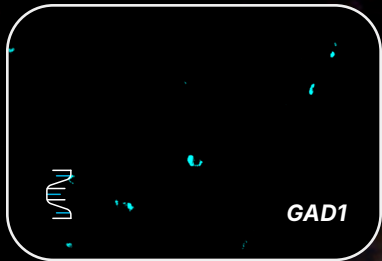
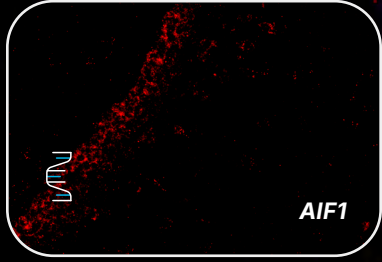
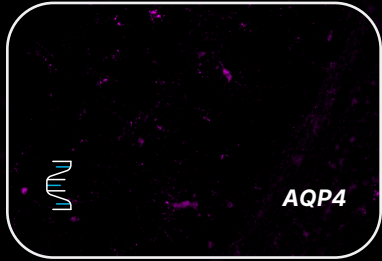
Select up to 6 RNA targets or easily combine both protein and RNA targets in **3 simple steps**. Designing panels is easy, just select the number of markers you need to achieve your goal.



**1** Start with up to 2 of your own primary antibodies raised in mouse and rabbit and use with available secondaries.

**2** Add up to 4 pre-conjugated antibodies.  
CD4 | CD 8 | FoxP3 |  
PanCK

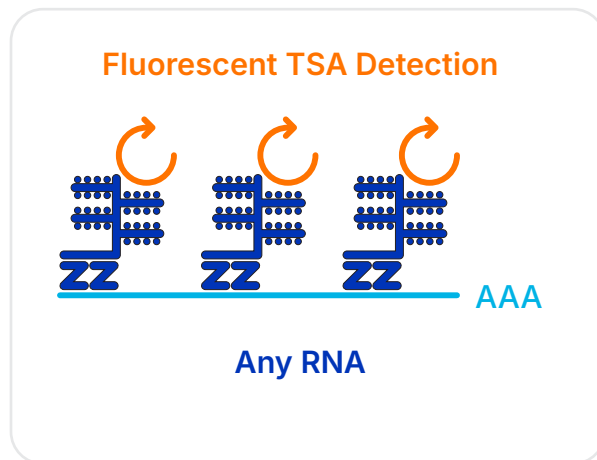
**3** Add RNA markers in open channels.



# Specific and Sensitive

Developed using RNAscope technology

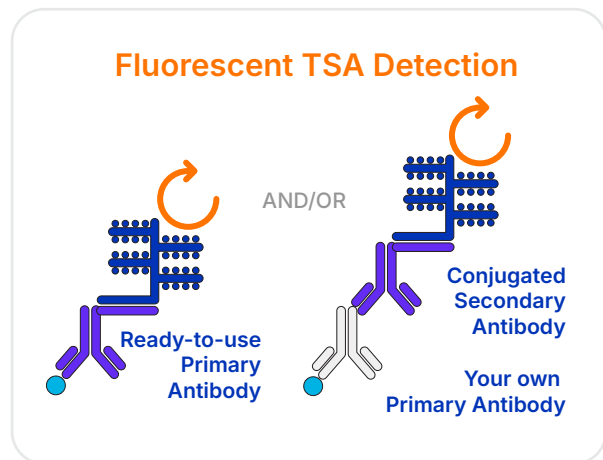
## RNA Detection



### RNAscope Chemistry

Visualize RNAs with RNAscope Multiplex v2 detection technology. RNA-specific target probes designed using proprietary double ZZ technology are amplified using RNAscope technology followed by fluorescent TSA detection.

## Protein Detection



### New Capability

Visualize proteins using ready-to-use pre-conjugated primary antibodies or your own unconjugated primary antibodies together with available pre-qualified secondary antibodies. Antibodies are detected using RNAscope amplification reagents followed by fluorescent TSA detection.

## Getting Started is easy.

Access this new capability using RNAscope Professional Assay Services or reserve your kit today for use on the BOND RX.



Contact us to get first access to this exciting new assay!

<https://info.bio-techne.com/MultiomicsLS.html>

**bio**techne®

Global Developer, Manufacturer, and Supplier of High Quality Reagents,  
Analytical Instruments, and Precision Diagnostics

**INCLUDES** R&D Systems™ Novus Biologicals™ Tocris Bioscience™ ProteinSimple™ ACD™ ExosomeDx™ Asuragen® Lunaphore™

**Contact Us**

**Global** [info@bio-techne.com](mailto:info@bio-techne.com), [bio-techne.com/find-us/distributors](http://bio-techne.com/find-us/distributors)

**North America** TEL 800 343 7475

**Europe // Middle East // Africa** TEL +44 (0)1235 529449

**China** [info.cn@bio-techne.com](mailto:info.cn@bio-techne.com), TEL 400.821.3475

For research use only. Not for use in diagnostic procedures. Trademarks and registered trademarks are the property of their respective owners.

5981659577 MK 51-194, Rev A