



# In situ analysis of cells in their true context

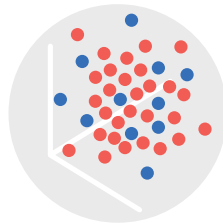
Xenium Analyzer





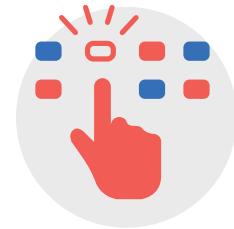
### High throughput

Large imaging areas and multiple slides per run



### High resolution

Single cell and subcellular resolution with Z-dimension information



### Easy to use

Automated to expand access  
Intuitive analysis tools

## Introducing Xenium

Using high-throughput single cell analysis to understand cellular diversity in tissues has opened new avenues of investigation and fueled new discoveries. These insights are only made richer when combined with spatial information. Examining spatial cellular patterns reveals details of the organization of normal and diseased tissue, the immune response and the complex arrangement of neural tissue.

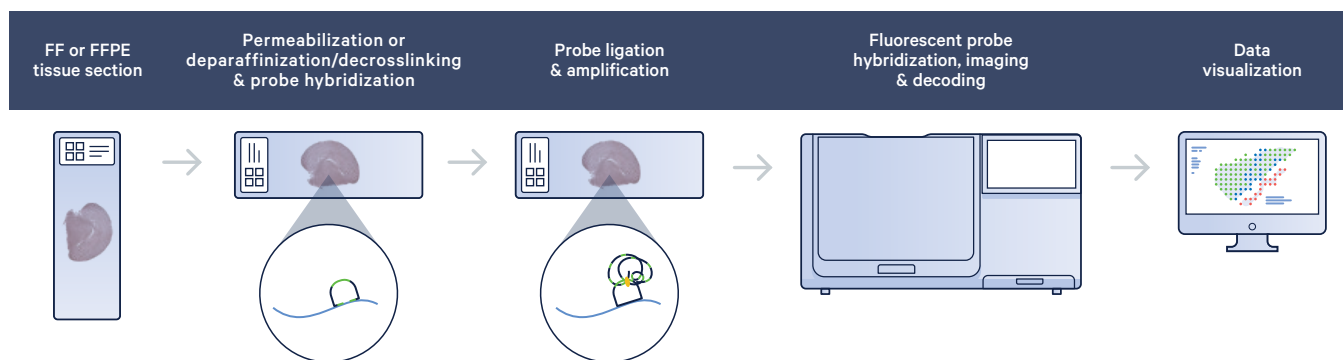
Xenium puts this analysis into much-needed context. The Xenium Analyzer instrument is designed for fully automated high-throughput analysis of cells in their tissue environment. Part of an end-to-end solution that includes pre-designed, validated panels and analysis tools for visualizing and studying spatial patterns of expression, the Xenium Analyzer is next-level in situ. Xenium may also be combined with single cell and spatial discovery techniques to bring greater resolution and enable a deeper look into gene expression patterns, helping researchers develop and refine hypotheses.

# In Situ Analysis

Xenium in situ analysis detects and preserves the cellular localization of hundreds of RNA targets directly in a tissue section without the need for conventional sequencing. This provides researchers with a detailed map of gene expression patterns without sacrificing resolution or target number.

## Technology overview

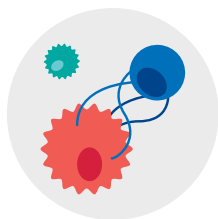
Xenium in situ analysis uses circulizable probes specific to target transcripts followed by enzymatic amplification to create a target for fluorescent probe hybridization. On the Xenium Analyzer, microscope images of the tissue detect the location of each fluorescent probe, which is then removed. Successive rounds of fluorescent probe hybridization, imaging, and removal produces a unique pattern of on-and-off fluorescent colors in a specific location, creating a unique optical signature that reveals the identity of the RNA at a location within each cell of a tissue. In the future, Xenium will allow the detection of both RNA and protein in the same tissue section, revealing complex and nuanced expression patterns.



**Build spatial transcriptome maps with Xenium In Situ.** Fresh Frozen or FFPE tissues are sectioned onto a Xenium slide. Sections are treated to access RNA for labeling with circularized DNA probes. Next, probe ligation generates a circular DNA probe which is enzymatically amplified. The slide is placed in the Xenium Analyzer for hybridization, imaging, decoding and data processing.

# Applications and research areas

Xenium allows researchers to identify gene expression patterns of cells in their original tissues, providing detailed spatial information that will aid research in many application areas, including:



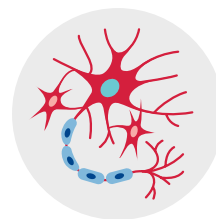
## Oncology

Reveal the spatial features of heterogeneity in the tumor and immune microenvironment and identify biomarkers with potential therapeutic impact.



## Immunology

Characterize the immune system and spatial localizations in response to infectious disease, allergic inflammation and autoimmune disorders.



## Neuroscience

Uncover spatial expression patterns in complex neural tissues in response to disease and traumatic injury.



Product description	Product code
<b>Xenium Analyzer</b>	1000481
Product specifications	
Parameter	Specifications
<b>Weight</b>	~420lbs (~190.5kg)
<b>Dimensions (W x D x H)</b>	52.6" [133.5 cm] x 27.0" [68.5 cm] x 31.1" [79.0 cm]
<b>Electrical Requirements</b>	200-240 VAC, 50-60Hz
<b>Usable Temperature Range</b>	19-25 °C (61-77°F)
<b>Humidity Range</b>	30-80% RH (non-condensing)
<b>Resolution</b>	~0.2 microns/pixel; <50nm lateral localization precision per image
<b>Run Time</b>	Up to 3 runs per week
<b>Throughput</b>	Up to 2 slides per run; 12 x 24 mm imageable area per
<b>Sample Type</b>	FF and FFPE tissue sections
<b>Targets and Plexy Level</b>	Up to 400 RNA transcripts

## Your map to spatial biology

Today's spatial biology is mapping in unprecedented detail the organization of cells within tissues. These maps, produced on the Xenium Analyzer, will allow researchers to navigate the genesis of human disease and the pathway to discovering therapies. Xenium will open the door to answering tough biological questions that were once out of reach. Our team of technical experts is here to guide and support you on your road to spatial discovery.

Take your spatial journey with us.

*Note: The information presented in this document includes 10x Genomics, Inc.'s estimates regarding the performance and specifications of the to-be-launched Xenium platform.*

### Contact us

[10xgenomics.com](https://10xgenomics.com) | [info@10xgenomics.com](mailto:info@10xgenomics.com)

© 2022 10x Genomics, Inc. FOR RESEARCH USE ONLY. NOT FOR USE IN DIAGNOSTIC PROCEDURES.  
LIT000175 - Rev A - Brochure - In situ analysis of cells in native tissue - Xenium Analyzer

