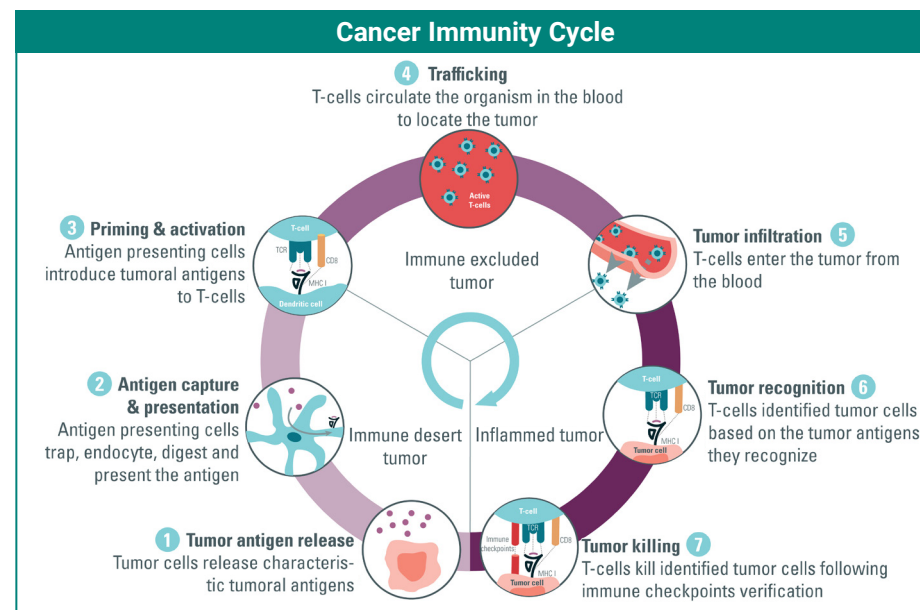


IMMUNO ONCOLOGY DRUG DISCOVERY

Immuno-oncology is at the forefront of cancer research and is a leader in the global drug development pipeline. This therapeutic strategy enables the body to prevent, control, and eliminate cancer by providing the immune system with tools to discover tumors and strengthen its ability to attack cancer cells.

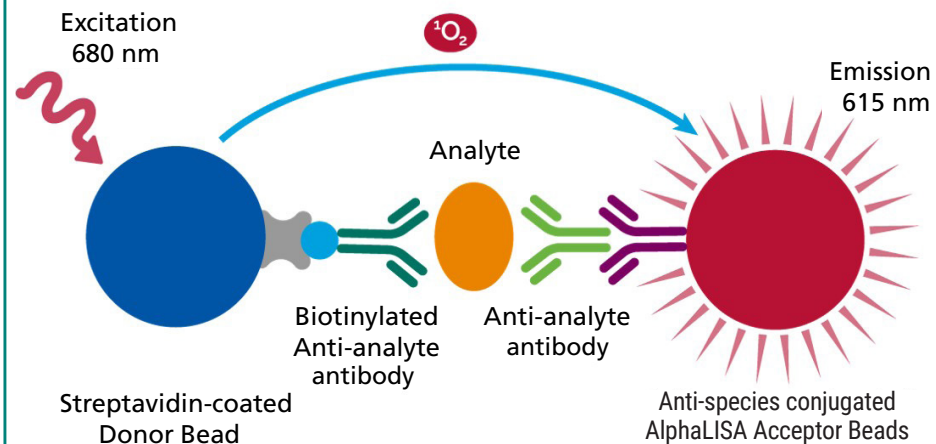
Advance your immuno-oncology research with PerkinElmer's extensive offerings:

- Large assay portfolio encompassing Innate Immunity (Toll-Like Receptors, STING Axis, Inflammasomes), Natural Killers, Adaptive Immunity (T-cells and CAR-T Therapies, B-cells), Immune Checkpoints, Immunosuppression, and other immune pathways.
- Homogeneous easy-to-use immunoassay kits providing fast and accurate results utilizing Alpha and HTRF assay platforms.



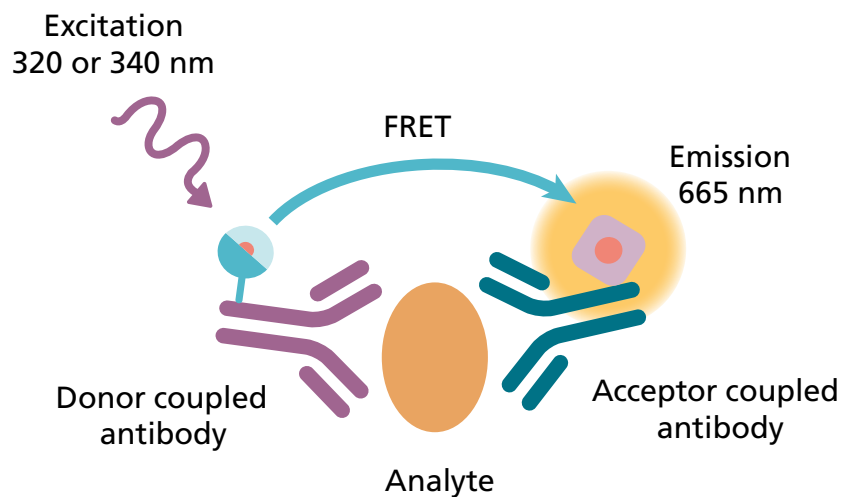
From an immunity standpoint, tumor management by the organism goes through seven stages as described by Mellman and Chen in 2013. All seven stages of the cycle can be addressed with a range of therapeutic strategies to enhance the immune strategies already in place and support the immunity-driven elimination of tumor cells.

ALPHA TECHNOLOGY



Alpha is a versatile, bead-based platform that enables you to assay the most complex samples in one well and with no wash steps.

HTRF TECHNOLOGY



HTRF is a fast, sensitive, homogeneous, and ready to use assay platform with no wash steps.

Table 1. Immune receptor and ligand detection assays.

	AlphaLISA
CD137L (4-1BBL)	AL3108C
CD252 (OX40L)	AL3100C
CD272 (BTLA4)	AL3062C
CD276	AL3060C
CD28	AL3044C
CD40	AL3102C
CD70	AL3103C
CD80	AL3055C
CD86	AL3045C
CTLA-4	AL3050C
Galectin-9	AL3051C
GITR	AL3101
HLA-C	AL3061C
HLA-E	AL3057C
PD-1	AL343C
PD-L1	AL355C
TIM-3	AL3052C
VISTA	AL3059C

Table 2. Biomarker detection assays.

	AlphaLISA	HTRF
Granzyme B	AL3170C	62HGRZBPEG
Perforin-1		63ADK100PEG
H2AX phospho S139		64H2XPEG
Cleaved PARP		64PARPEG
Ki-67		64KI67PEG

The Right Microplates for Successful Assays

PerkinElmer offers a variety of microplates for a wide range of applications. Our microplates are precisely designed to provide the best signal detection and assay quality for both biochemical and cell-based assays.

Learn more here: www.perkinelmer.com/microplates

Table 3. Assays to measure GPCR activation.

	Part Number
HTRF Gs Dynamic cAMP	62AM4PEB
HTRF Gs HiRange cAMP	62AM6PEB
HTRF Gi cAMP	62AM9PEB
LANCE Ultra cAMP	TRF0262
HTRF IP-One Gq	62IPAPEB
AlphaLISA IP-One Gq	AL3145D
HTRF β -Arrestin Recruitment	62BDBAR2PEB
HTRF Total β -Arrestin 1	64BAR1TPEB
HTRF Total β -Arrestin 2	64BAR2TPEB

Table 4. Biochemical binding assays.

	AlphaLISA	HTRF
Immune Checkpoints		
CD28/CD80	AL3131C	
CD47/SIRP α		64SIRPPEG
CTLA4/CD80	AL3046C	64ICP04PEG
CTLA4/CD86	AL3047C	64ICP05PEG
LAG3/MHCII	AL3066C	64ICP03PEG
PD1/PD-L1*	AL356C	64PD1PEG
PD1/PD-L2	AL3128C	
STING-cGAMP		
Human AQ STING binding kit	64BDSTGQPEG	
Human STING WT binding kit	64BDSTGPEG	AL3144C
Human H232 STING binding kit	64BDSTGHPEG	
Mouse STING WT binding kit	64BDSTGMPEG	

* Also available for mouse, cyno

Table 5. Cellular phosphorylation assays.

	AlphaLISA	HTRF
4EBP1 phospho T37/46*	ALSU-P4EBP-A500	64BP1PEG
AKT phospho S473*	ALSU-PAKT-B500	64AKSPEG
AKT phospho T308*	ALSU-PAKT-A500	64AKTPEG
c-Jun phospho S63		61P14KAE
c-Jun phospho S73	TGRCJ2S500	
c-Myc	ALSU-TCMYC-A500	63ADK053PEG
cRaf1 phospho S338*	ALSU-PRAF-A500	63ADK018PEG

Table 5. Cellular phosphorylation assays continued.

	AlphaLISA	HTRF
CREB phospho S133*	ALSU-PCREB-A500	64CREPEG
EIF4E phospho S209*	ALSU-PEIF4-A500	64EF4PEG
ERK1/2 phospho T202/Y204*	ALSU-PERK-A500	64AERPEG
HMGB1		62HMGPEG
IKK β phospho S177/181*		64KKBPEG
IRAK3		63ADK101PEG
IRAK4	ALSU-TIRAK-A500	63ADK108PEG
IRF3 phospho S386		6FRF3PEG
JNK phospho T183/S185*	ALSU-PJNK-A500	64JNKPEG
MNK phospho T197/202		63ADK022PEG
mTOR phospho S2448	ALSU-PMTOR-C500	64TORPEG
mTOR phospho S2481	ALSU-PMTOR-B500	
NF-kB p65 phospho S536*	ALSU-PNFKB-A500	64NFBPEG
p38 phospho T180/Y182*	ALSU-PP38-B500	64P38PEG
p70 S6K phospho T389*	ALSU-PP70-A500	64S6KPEG
PLC γ 1 phospho Y783*		64PLCG1Y3PEG
PLC γ 2 phospho Y753*	ALSU-PPLCG2-A500	
PLC γ 2 phospho Y759*	ALSU-PPLCG2-B500	
PLC γ 2 phospho Y1197*	ALSU-PPLCG2-C500	
PLC γ 2 phospho Y1217*	ALSU-PPLCG2-D500	64PLCG2Y7PEG
S6RP phospho S235/236	ALSU-PS6R-B500	64RP6PEG
SHP1 phospho Y536*	ALSU-PSHP1-A500	
SHP1 phospho Y564*	ALSU-PSHP1-B500	64SH1PEG
SHP2 phospho Y542*	ALSU-PSHP2-A500	64SH2PEG
SHP2 phospho Y580*	ALSU-PSHP2-B500	
SLP76 phospho S376*	ALSU-PSLP-A500	63ADK076PEG
SMAD2 phospho S465/467*	ALSU-PSM2-A500	63ADK102PEG
SMAD3 phospho Y423/425*	ALSU-PSM3-A500	63ADK025PEG
STAT1 phospho Y701*	ALSU-PST1-A500	63ADK026PEG
STAT1 phospho S727*	ALSU-PST1-B500	
STAT3 phospho Y705*	ALSU-PST3-A500	62AT3PET
STAT6 phospho Y641*	ALSU-PST6-A500	64AT6PEG
STING phospho S366*		64STGPEG
SYK phospho Y352*	ALSU-PSYK-A500	
SYK phospho Y525/526*	ALSU-PSYK-B500	64SYKY525PEG
TBK1 phospho S172*	ALSU-PTBK1-A500	64TBKPEG
ZAP70 phospho Y319*	ALSU-PZAP-A500	64ZAPPEG

* Total kits also available.
Many assays also cross react with mouse

Table 6. Cytokine detection assays.

	AlphaLISA	HTRF
CCL2 (MCP-1)*	AL244C	62HCCL2PEG
CCL3 (MIP-1 α)	AL257C	62HCCL2PEG
CCL4 (MIP-1 β)*	AL258C	62HCCL4PEG
CCL5 (RANTES)*	AL289C	62HCCL5PEG
CCL18 (PARC)	AL3106C	
CCL20 (MIP3)		62HCC20PEG
CXCL1 (GRO α)	AL349C	62HCXC1PEG
CXCL9 (MIG)	AL280C	
CXCL10 (IP10)*	AL3163C	62HCX10PEG
CXCL11	AL260C	
CXCL13	AL3098C	
G-CSF	AL213C	62HGCSFPEG
GM-CSF	AL216C	62HGMCSFPEG
IL-1 α *	AL238C	62HIL1APEG
IL-1 β *	AL3160C	62HIL1BPEG
IL-2*	AL3155C	62HIL02PEG
IL-3*	AL3134C	
IL-4*	AL266C	62HIL04PEG
IL-5*	AL267C	62HIL05PEG
IL-6*	AL223C	62HIL06PEG
IL-7*	AL268	
IL-8	AL3164C	62HIL08PEG
IL-10*	AL3159C	62HIL10PEG
IL-12	AL3116	62HIL12PEG
IL-12p40	AL382	
IL-13*	AL240C	62HIL13PEG
IL-15	AL360C	
IL-17*	AL219C	62HIL17PEG
IL-17A	AL3161C	
IL-17F	AL391C	
IL-18	AL3137C	62HIL18PEG

* Also available for mouse

** Also available for mouse, cyno

Table 6. Cytokine detection assays continued..

	AlphaLISA	HTRF
IL-22	AL320C	62HIL22PEG
IFN- α *	AL297C	62HIFNAPEG
IFN- β *	AL3133C	62HIFNBPEG
IFN- γ *	AL3153C	62HIFNGPEG
TGF- β *	AL336C	62HTGFBPEG
TNF- α **	AL3157C	62HTNFAPEG

* Also available for mouse

** Also available for mouse, cyno

†Also available for rat

Table 7. Luminescence cell viability assays.

	Part Number
ATPlite™ 1step*	6016736
ATPlite™ **	6016943

* Exists in 10/100/1,000 mL

** Exists in 300/1,000/5,000/10,000 tests

Table 8. Time-resolved fluorescence assays for cell viability.

	Part Number
DELFI A Cell Proliferation Kit	AD0200
DELFI A Cytotoxicity Kit	AD0116

Table 9. Luminescence reporter gene assays.

	Part Number
britelite™ plus*	6066766
neolite™ *	6016716
steadylite™ plus*	6066756

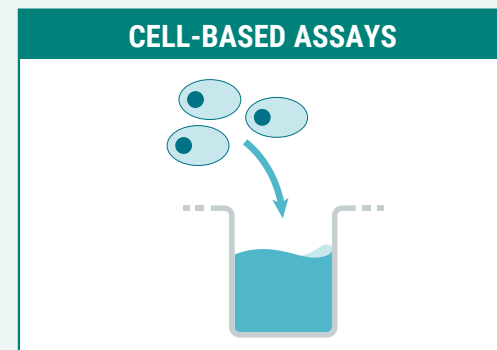
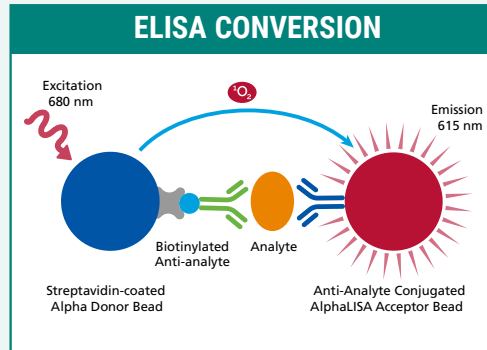
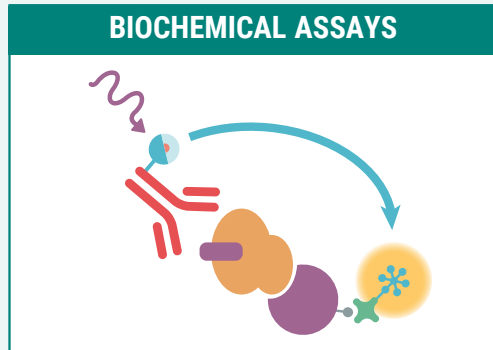
* Exists in 10/100/1,000 mL

**Our Team is Constantly Developing New Tools
to Support Your Research and Drug Discovery Efforts.**

[Visit Our Website to Explore Our Newest Assays!](#)

Custom Labeling and Custom Assay Development Services

Don't see the assay you need listed here? PerkinElmer partners with industry and academia professionals to develop custom solutions and shorten the drug development process using our powerful, accurate HTRF®, DELFIA® and AlphaLISA® technologies.



Contact us today: www.cisbio.com/content/custom-solutions

High Performance Plate Readers

Find a powerful and reliable plate reader to ensure optimal read-outs for your HTRF and Alpha assay needs. VICTOR® Nivo™ Industry's smallest multimode plate reader for everyday biochemical and cell-based assays EnSight® Fast well-imaging and multimode detection, all in one instrument, to gain deeper insights EnVision® Exceptional speed and sensitivity, ideal for labs needing high throughput combined with robust performance.

For more information: www.perkinelmer.com/category/microplate-readers



FOR MORE INFORMATION VISIT WWW.PERKINELMER.COM

PerkinElmer, Inc.
940 Winter Street
Waltham, MA 02451 USA
P: (800) 762-4000 or
(+1) 203-925-4602
www.perkinelmer.com



For a complete listing of our global offices, visit www.perkinelmer.com/ContactUs

Copyright ©2021, PerkinElmer, Inc. All rights reserved. PerkinElmer® is a registered trademark of PerkinElmer, Inc. All other trademarks are the property of their respective owners.