

**Luminex**



**xMAP**® Technology

Products and Services Catalog



**Luminex**<sup>®</sup>

## Mission

We aim to empower labs to obtain reliable, timely, and actionable answers, ultimately advancing health.

# Table of Contents

This catalog includes xMAP® products and services, including xMAP Instruments, xMAP Software, xMAP reagents and accessories, instrument service plans, and Luminex Learning training courses.

You can learn more about Luminex and these additional products and services by contacting your local Luminex representative, or by visiting our website at [luminexcorp.com](http://luminexcorp.com).

*\*For Research Use Only. Not for use in diagnostic procedures.*

## Introduction

xMAP® Technology Overview

## Instruments

xMAP INTELLIFLEX® (RUO)\*  
FLEXMAP 3D®  
Luminex® 200™  
MAGPIX®

## Software

xMAP INTELLIFLEX® Software  
xPONENT® Software

## Reagents and Accessories

MagPlex® Microspheres  
MagPlex-TAG™ Microspheres  
MagPlex®-Avidin Microspheres  
MagPlex® Monitoring Microspheres  
MicroPlex® Microspheres  
LumAvidin® Microspheres  
SeroMAP™ Microspheres  
xMAP® Antibody Coupling Kit  
Magnetic Separators  
xMAP® Instrument Reagents

## Service Plans

Instrument Service Plans

## Training

Luminex Learning  
LuminexPLORE Lab

## About Luminex

Become a Luminex Partner  
Locations & Contact Information

# xMAP® Technology

## Overview

xMAP® microspheres (or beads) come in a variety of formats. MagPlex® Microspheres, for example, are 6.5 micron superparamagnetic beads that are dyed with up to three red and infrared fluorescent dyes, resulting in 500 distinctly colored bead sets and delivering data on up to 500 analytes per well.

## Get Data on up to 500 Analytes per Well

Multiplexing biological assays reduces time to results, sample requirements, and costs compared to traditional methods. With an open architecture design, you can choose from an extensive menu of commercially available kits and design your own assays.

## Microsphere Analysis

xMAP beads are internally color-coded microspheres with precise concentrations of multiple fluorescent dyes, **yielding up to 500 distinctly colored bead sets**.

xMAP microspheres can be coupled with target-specific molecules such as antigens, antibodies, oligonucleotides, enzyme substrate, receptors, etc. After an analyte in a sample is captured by this target-specific molecule, a fluorescent reporter molecule is introduced to complete the reaction on the surface of each microsphere.

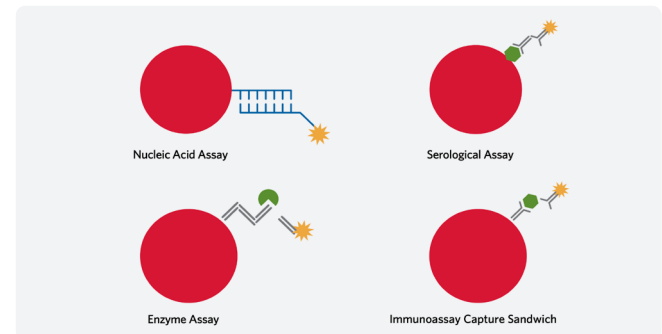
The internal dyes on the microspheres are excited by the red laser or LED to identify the microsphere set. Then, a green laser or LED excites the fluorescent reporter dye. Using these signals, each individual microsphere is identified and the amount of target molecule bound to its surface is quantified.

## How it Works

Approximately  $10^8$  surface carboxyl groups (COOH) cover the surface of each bead and serve as covalent attachments for capture ligands. A fluorescent reporter is coupled to a target molecule, enabling detection following capture on the microsphere's surface.

## Advantages and Benefits

- **High-Throughput Testing and Analysis** - Because each microsphere serves as an individual test, a large number of different assays can be performed and analyzed simultaneously.
- **Versatility** - A single xMAP system can perform assays using several different methods and chemistries, including nucleic acid hybridization, antigen-antibody binding, enzyme reactivity, receptor-ligand binding, and other protein interactions.
- **Accuracy** - xMAP Technology generates data and accurately quantifies the biological interactions being tested.
- **Flexibility** - Multiplexing supports a variety of applications ranging from life sciences research and clinical diagnostics to food safety and biodefense.
- **Reproducibility** - High-volume production of xMAP microspheres within a single lot delivers reduced variability that solid-phased flat arrays cannot provide.



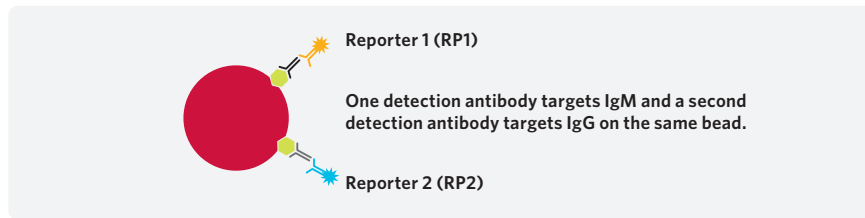
# Double the Data with the New Dual Reporter Feature on xMAP INTELLIFLEX®

## More Data from Each Target

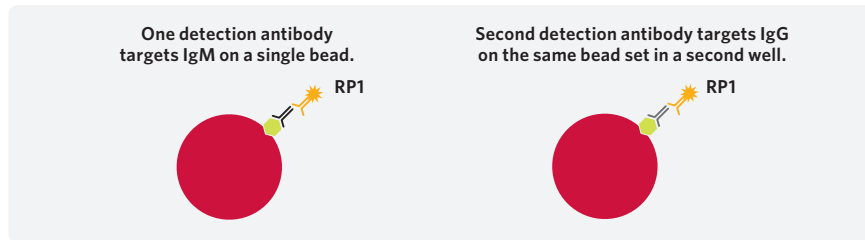
With the addition of a second reporter channel, you can acquire data about two parameters per target protein or nucleic acid, saving time and precious sample. This feature is ideally suited for measuring multiple isotypes or configurations targeting the same antigen.

## Serological Assay

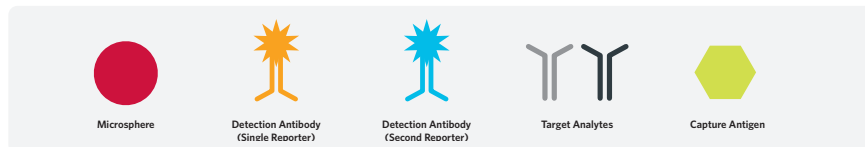
### Two Reporter Channels (Dual Reporter)



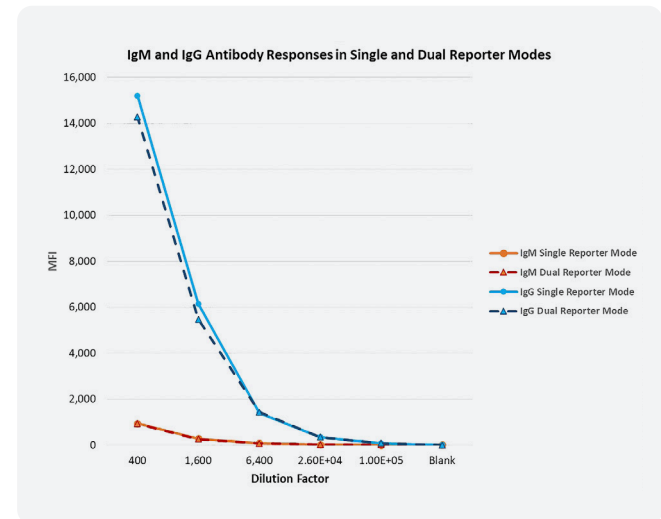
### One Reporter Channel (Traditional Single Reporter)



### Key



### Equivalent Signal in Both Single and Dual Reporter Mode



Phycoerythrin-labeled IgM detection antibody and streptavidin-Super Bright 436 + biotinylated IgG detection antibody were used to measure SARS-CoV-2 N antigen-specific IgM and IgG in single and dual reporter modes. When run together, no interference was observed between the dyes and MFI values were equivalent.



## Multiplexing Solutions for Proteins and Nucleic Acids

Luminex offers multiple xMAP®-based instruments, covering a range of laboratory and budgetary needs. Installation Qualification (IQ) and Operational Qualification (OQ) validation protocols are available for each of the below instruments. Contact your Luminex Representative for more details.

	xMAP INTELLIFLEX®	FLEXMAP 3D®	Luminex® 200™	MAGPIX®
<b>Software</b>	INTELLIFLEX™	xPONENT®	xPONENT®	xPONENT®
<b>Optics</b>	Lasers/APDs/PMTs	Lasers/APDs/PMTs	Lasers/APDs/PMTs	LED Camera
<b>Hardware</b>	Flow-based	Flow-based	Flow-based	Fluorescent imager
<b>Bead Compatibility</b>	MagPlex® MicroPlex® MagPlex-TAG™ SeroMAP™ LumAvidin® MagPlex®-Avidin	MagPlex® MicroPlex® MagPlex-TAG™ SeroMAP™ LumAvidin® MagPlex®-Avidin	MagPlex® MicroPlex® MagPlex-TAG™ SeroMAP™ LumAvidin® MagPlex®-Avidin	MagPlex® MagPlex-TAG™ MagPlex®-Avidin
<b>Multiplex Capacity</b>	500 analytes per well; Up to 2 parameters per analyte with second reporter channel <sup>†</sup>	500 analytes per well	100 analytes per well (80 for MagPlex®)	50 analytes per well
<b>Read Time</b>	-20 min/96-well plate -75 min/384-well plate	- 20 min/96-well plate - 75 min/384-well plate	- 45 min/96-well plate	- 60 min/96-well plate
<b>Applications</b>	Protein/nucleic acid			
<b>IVD Cleared Assays*</b>	No	Yes		
<b>Dynamic Range</b>	≥5.5 logs (RP1) ≥4.5 logs (RP2) <sup>‡</sup>	≥4.5 logs (RP1)	≥3.5 logs (RP1)	≥3.5 logs (RP1)
<b>Microtiter Plate</b>	96-well and 384-well	96-well and 384-well	96-well	96-well
<b>Dimensions, Including Computer (Width x Depth x Height)</b>	-58 x 61 x 76 cm <sup>‡</sup>	-110 x 62 x 63 cm	-115 x 60 x 50 cm	-70 x 60 x 50 cm
<b>Weight (Analyzer)</b>	54.4 kg (120 lbs)	771 kg (170 lbs)	49 kg (113 lbs)	17.5 kg (38.5 lbs)
<b>Warranty</b>	1 year			

The Luminex® 200™, FLEXMAP 3D®, and xMAP INTELLIFLEX® are class 1(I) laser products.

\*For use on IVD-labeled instruments only.

<sup>†</sup>The second reporter channel is only available in the xMAP INTELLIFLEX® DR-SE RUO model.

<sup>‡</sup>Computer is internal.

# xMAP INTELLIFLEX®

xMAP INTELLIFLEX® is the only compact, flow-based, multiplex platform that combines the proven performance of xMAP® Technology with modern features to enhance performance, empower assay development innovation, and simplify your user experience. No other multiplex platform combines low- and high-plex capabilities, quick time to reliable results, and the ability to simultaneously acquire data for two parameters per analyte.

## xMAP INTELLIFLEX® at a Glance:

- Up to 500 analytes in a single well; up to 2 parameters per analyte with second reporter channel
- Commercially available kits deliver sensitivity as low as sub-picogram level
- Dynamic range of  $\geq 5.5$  logs (RP1) and  $\geq 4.5$  logs (RP2)
- Reads a 96-well plate in  $\leq 20$  min and a 384-well plate in  $\leq 75$  min
- Daily Startup/Shutdown:  $\leq 30$  min

## Included with xMAP INTELLIFLEX®:

<b>Core Instrument</b>	The xMAP INTELLIFLEX® flow-based reader comes equipped with: <ul style="list-style-type: none"> <li>• 1 x xMAP INTELLIFLEX® Quick Guide</li> <li>• 3 x Sample Probe Needle</li> <li>• 1 x Sample Needle Height Alignment Kit</li> <li>• 1 x Power Cable, Country-Specific</li> <li>• 1 x Off-Plate Reagent Block</li> <li>• 1 x Heater Block (96-well)</li> <li>• 1 x Heater Block (384-well)</li> <li>• 1 x Waste Container</li> <li>• Documentation</li> </ul>
<b>Included Software</b>	xMAP INTELLIFLEX®
<b>Optional Software</b>	21 CFR Part 11 Module* Automation Interface Module*
<b>Reagents Included</b>	1 x xMAP INTELLIFLEX® Calibration Kit, 20 Uses ( <i>shipped separately</i> ) 1 x xMAP INTELLIFLEX® Performance Verification Kit, 20 Uses ( <i>shipped separately</i> ) 1 x Sheath Fluid PLUS (20 L) ( <i>shipped with xMAP INTELLIFLEX®</i> )
<b>User Interface</b>	Integrated PC with Win10 IoT Enterprise LTSC Integrated 15.6" LCD Touchscreen 1 x Keyboard and Mouse Combo Integrated barcode scanner ( <i>For importing target values from the xMAP INTELLIFLEX® Calibration and Performance Verification Kits</i> )

\*Coming soon, extra charges apply.

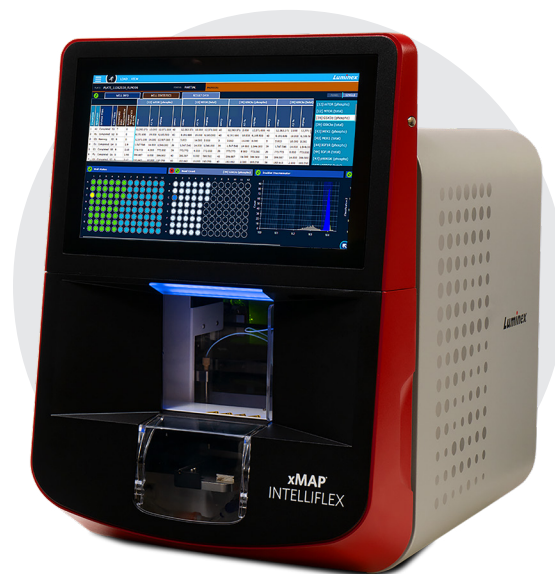


# xMAP INTELLIFLEX® Ordering Information

Instrument	RUO Part Number*
xMAP INTELLIFLEX® Instrument	INTELLIFLEX-RUO
xMAP INTELLIFLEX® DR-SE Instrument	INTELLIFLEX-DRSE-RUO
Consumables	
xMAP INTELLIFLEX® Calibration Kit	IFX-CAL-K20
xMAP INTELLIFLEX® Performance Verification Kit	IFX-PVER-K20
xMAP® Sheath Concentrate PLUS (20X)	40-50023
xMAP® Sheath Fluid PLUS (20 L)	40-50021

\*For Research Use Only. Not for use in diagnostic procedures.

	Part Number
Accessories	
Heater Block for 384-Well Microtiter Plates	CN-0223-01
Heater Block for 96-Well Microtiter Plates	CN-0224-01
Sample Needle Height Alignment Kit	CN-0015-01
Off-Plate Reagent Block	CN-0514-01
Spare Parts	
Preventive Maintenance (PM) Kit, 6 Months	CN-0458-01
Sample Probe Needle	CN-0221-01
Syringe Cylinder with Seal, 500 µL	CN-0013-01
Sheath Filter with Quick Disconnect	CN-0010-01
IQ/OQ and Yearly OQ Packages	
xMAP INTELLIFLEX® IQ/OQ with Installation	VP-INTELLIFLEX-IQOQ
xMAP INTELLIFLEX® Yearly OQ	VP-INTELLIFLEX-OQ



# FLEXMAP 3D<sup>®</sup>

Fast read times, compatibility with both 96- and 384-well plates, and ease of integration with front-end automation systems make the FLEXMAP 3D<sup>®</sup> suitable for high-throughput applications. This system uses both magnetic and non-magnetic microspheres, and can simultaneously measure up to 500 genes or proteins from a small sample volume. With automated start-up, shutdown, and maintenance routines, the FLEXMAP 3D is easy to use and maintain.

## FLEXMAP 3D<sup>®</sup> Features

- **Multiplexing Capabilities:** Up to 500 analytes in a single well
- **Sensitivity:** 200 to 500 fluorochromes per microsphere
- **Dynamic Range (Typical):** >4.5 logs
- **Read Time:** 96-well plate in ≤20 min (up to 144,000 tests/hr)  
384-well plate in ≤75 min (up to 153,600 tests/hr)
- **Daily Startup/Shutdown:** ≤30 min

## Included with FLEXMAP 3D<sup>®</sup>

<b>Core Instrument</b>	The FLEXMAP 3D <sup>®</sup> flow-based reader comes equipped with: <ul style="list-style-type: none"> <li>▪ 1 x Sample Probe Needle</li> <li>▪ 1 x Off-Plate Reagent Block</li> <li>▪ 1 x Waste Container</li> <li>▪ 1 x Sample Needle Height Alignment Kit</li> <li>▪ 1 x Barcode Scanner</li> <li>▪ 1 x Probe Height Adjustment Plate</li> <li>▪ 1 x Heater Block (96-well)</li> <li>▪ 1 x Heater Block (384-well)</li> <li>▪ Documentation</li> </ul>
<b>Included Software</b>	xPONENT <sup>®</sup> Allele-Call Module Remote Web Monitoring Module 500 Analyte Support Module
<b>Optional Software (extra charges apply)</b>	LIS Integration Module Automation Interface Module Security Module 21 CFR Part 11 Module ( <i>supersedes Security Module</i> )
<b>Reagents Included</b>	1 x FLEXMAP 3D <sup>®</sup> Calibration Kit, 25 uses ( <i>shipped separately</i> ) 1 x FLEXMAP 3D <sup>®</sup> Performance Verification Kit, 25 uses ( <i>shipped separately</i> ) 1 x xMAP <sup>®</sup> Sheath Fluid PLUS (20 L) ( <i>shipped with FLEXMAP 3D<sup>®</sup></i> )
<b>PC with xPONENT</b>	<b>PC with Win10 64-bit, US English, and xPONENT<sup>®</sup> 4.3</b> Dell Optiplex XE3 Small Form Factor Desktop PC Dell Warranty Transfer Arm Mounted ELO 19" Touch Screen Monitor and USB Stereo Speaker System (RUO models only) Dell 1917S Series 19" Monitor with Stand (IVD models only) Dell Keyboard & Mouse

# FLEXMAP 3D® Ordering Information

Instrument	RUO Part Number*	IVD Part Number†
FLEXMAP 3D® Instrument	FLEXMAP-3D-RUO	FLEXMAP-3D
<b>Consumables</b>		
FLEXMAP 3D® Calibration Kit	F3D-CAL-K25	F3DIVD-CAL-K25
FLEXMAP 3D® Performance Verification Kit	F3D-PVER-K25	F3DIVD-PVER-K25
xMAP® Sheath Concentrate PLUS (20X)	40-50023	40-50036
xMAP® Sheath Fluid PLUS (20 L)	40-50021	40-50035

\*For Research Use Only. Not for use in diagnostic procedures.

†For In Vitro Diagnostic Use. Products are regions specific and may not be available in your country/region.

	Part Number
<b>Accessories</b>	
Swivel Base for FLEXMAP 3D®	CN-0216-01
Heater Block for 384-Well Microtiter Plates	CN-0223-01
Heater Block for 96-Well Microtiter Plates	CN-0224-01
Sample Needle Height Alignment Kit	CN-0015-01
Probe Height Adjustment Plate	CN-0298-01
Barcode Scanner, USB	CN-PC03-01
<b>Spare Parts</b>	
6-Month PM Kit (FM3D, Increased Throughput)	CN-0215-01
Sample Probe Needle	CN-0221-01
Off-Plate Reservoir	CN-0225-01
6 Amp Fuse, 250V	CN-0226-01
<b>IQ/OQ and Yearly OQ Packages</b>	
FLEXMAP 3D® IQ/OQ with Installation	VP-FM3D-XPON-IQOQ
FLEXMAP 3D® Yearly OQ	VP-FM3D-XPON-OQ



# Luminex® 200™

The Luminex® 200™ set the standard for multiplexing with over 8,000 units sold globally and more than 50 510(k)-cleared assays available. The ability to perform up to 100 different tests in a single reaction and use either magnetic or plain polystyrene beads makes this instrument a popular choice for laboratories needing greater flexibility.

## Luminex® 200™ Features

- **Multiplexing Capabilities:** Up to 100 analytes per well (80 on MagPlex® microspheres)
- **Sensitivity:** ≤1,000 fluorochromes per microsphere
- **Dynamic Range (Typical):** >3.5 logs
- **Read Time:** 96-well plate in ≤45 min (up to 12,800 tests/hr)
- **Daily Startup/Shutdown:** ≤30 min

## Included with the Luminex® 200™

<b>Core Instrument</b>	The Luminex® 200™ flow-based reader comes equipped with: <ul style="list-style-type: none"> <li>▪ Sheath Delivery System</li> <li>▪ XY Platform for 96-well plates</li> <li>▪ 1 x Sample Probe Needle</li> <li>▪ 1 x 1 L Sheath Bottle</li> <li>▪ 1 x 1.2 L Waste Bottle</li> <li>▪ 1 x Sample Needle Height Alignment Kit</li> <li>▪ 1 x Automated Maintenance Plate</li> <li>▪ 1 x Heater Block (96-well plate)</li> <li>▪ Documentation</li> </ul>
<b>Barcode Scanner</b>	Optional; available with the purchase of a new system
<b>Included Software</b>	xPONENT® Allele-Call Module Remote Web Monitoring Module
<b>Optional Software (extra charges apply)</b>	LIS Integration Module Automation Interface Module Security Module 21 CFR Part 11 Module ( <i>supersedes Security Module</i> )
<b>Reagents Included</b>	1 x Luminex® 200™ Calibration Kit, 25 Uses ( <i>shipped separately</i> ) 1 x Luminex® 200™ Performance Verification Kit, 25 Uses ( <i>shipped separately</i> ) 1 x xMAP® Sheath Fluid PLUS (20 L) ( <i>shipped with Luminex® 200™</i> )
<b>PC with xPONENT® Software</b>	<b>PC with Win10 64-bit, US English, and xPONENT® 4.3</b> Dell Optiplex XE3 Small Form Factor Desktop PC Dell Warranty Transfer Dell 1917S Series 19" Monitor with Stand Dell Keyboard and Mouse

# Luminex® 200™ Ordering Information

Instrument	RUO Part Number*	IVD Part Number†
Luminex® 200™ System	LX200-XPON-RUO	LX200-XPON-IVD
<b>Consumables</b>		
Luminex® 200™ Calibration Kit, 25 uses	LX2R-CAL-K25	LX200-CAL-K25
Luminex® 200™ Performance Verification Kit, 25 uses	LX2R-PVER-K25	LX200-CON-K25
xMAP® Sheath Concentrate PLUS (20X)	40-50023	40-50036
xMAP® Sheath Fluid PLUS (20 L)	40-50021	40-50035

\*For Research Use Only. Not for use in diagnostic procedures.

†For In Vitro Diagnostic Use. Products are regions specific and may not be available in your country/region.

	Part Number
<b>Accessories</b>	
Sample Needle Height Alignment Kit	CN-0015-01
Heater Block (XYP)	CN-0017-01
Automated Maintenance Plate	CN-0206-01
Barcode Scanner, USB	CN-PC03-01
<b>Spare Parts</b>	
Air Filter Base (HEPA)	CN-0001-01
Short Sample Probe	CN-0006-01
Long Sample Probe	CN-0007-01
Sheath Filter with Quick Disconnect	CN-0010-01
Intake Air Filter, qty 5	CN-0027-01
6-Month Preventative Maintenance Kit	CN-0096-01
<b>IQ/OQ and Yearly OQ Packages</b>	
Luminex® 200™ IQ/OQ with Installation	VP-LX-XPON-IQOQ
Luminex® 200™ Yearly OQ	VP-LX-XPON-OQ





# MAGPIX®

MAGPIX® is the simplest, most affordable, and most portable of Luminex's xMAP instruments. This compact multiplexing unit performs up to 50 different tests in a single reaction volume and reads a 96-well plate in just 60 minutes. MAGPIX features self-cleaning routines and is compatible with MagPlex® beads, making the instrument easy to learn and easy to use.

## MAGPIX® Features

- **Multiplexing Capabilities:** Up to 50 analytes per well
- **Sensitivity:**  $\leq 700$  fluorochromes per microsphere
- **Dynamic Range (Typical):**  $> 3.5$  logs
- **Read Time:** 96-well plate in  $\leq 60$  min (up to 4,800 tests/hr)
- **Daily Startup/Shutdown:**  $\leq 15$  min

## Included with MAGPIX®

<b>Core Instrument</b>	The MAGPIX® Bead Reader comes equipped with: <ul style="list-style-type: none"> <li>▪ 1 x Sample Probe Needle</li> <li>▪ 1 x Off-Plate Reagent Block</li> <li>▪ 1 x Waste Bottle</li> <li>▪ 1 x Sample Probe Height Adjustment Kit</li> <li>▪ 1 x Access Door Tool</li> <li>▪ Documentation</li> <li>▪ 1 x Heater Block (96-well plate)</li> </ul>
<b>Barcode Scanner</b>	Included with the purchase of a new system
<b>Included Software</b>	xPONENT® Allele-Call Module Remote Web Monitoring Module
<b>Optional Software (extra charges apply)</b>	LIS Integration Module Automation Interface Module Security Module 21 CFR Part 11 Module ( <i>supersedes Security Module</i> )
<b>Reagents Included</b>	1 x MAGPIX® Calibration Kit, 25 Uses ( <i>shipped separately</i> ) 1 x MAGPIX® Performance Verification Kit, 25 Uses ( <i>shipped separately</i> ) 2 x MAGPIX® Drive Fluid PLUS ( <i>shipped with MAGPIX®</i> )
<b>PC with xPONENT® Software</b>	<b>PC with Win10 64-bit, US English, and xPONENT® 4.3</b> Dell Optiplex XE3 Small Form Factor Desktop PC Dell Warranty Transfer Dell 1917S Series 19" Monitor with Stand Dell Keyboard and Mouse

# MAGPIX Ordering Information

Instrument	RUO Part Number*	IVD Part Number†
MAGPIX® Instrument	-	MAGPIX-XPON4.1-CEIVD
Consumables		
MAGPIX® Calibrator Kit, 25 uses	MPX-CAL-K25	MPXIVD-CAL-K25
MAGPIX® Performance Verification Kit, 25 uses	MPX-PVER-K25	MPXIVD-PVER-K25
MAGPIX® Drive Fluid PLUS, 4-pack	40-50030	40-50020

\*For Research Use Only. Not for use in diagnostic procedures.

†For In Vitro Diagnostic Use. Products are regions specific and may not be available in your country/region.

	Part Number
Accessories	
Heater Block for 96-Well Microtiter Plates	CN-0224-01
Sample Probe Height Adjustment Kit	CN-0263-01
Barcode Scanner, USB	CN-PC03-01
Spare Parts	
Sample Probe Needle, qty 1	CN-0221-01
Air Filter (4.5 x 4.5 in)	CN-0257-01
Drive Fluid Filter	CN-0258-01
Sample to Valve Tubing Assembly	CN-0259-01
Waste Bottle Assembly	CN-0261-01
6-Month Preventative Maintenance Kit with Syringe, 500 µL, Ball End	CN-0262-01
12-Month Preventive Maintenance Kit, MAGPIX®	CN-0287-01
IQ/OQ and Yearly OQ Packages	
MAGPIX® IQ/OQ with Installation	VP-MAGPIX-XPON-IQOQ
MAGPIX® Yearly OQ	VP-MAGPIX-XPON-OQ



**Luminex**

LOAD SAVE IMPORT DELETE

PLATE PROTOCOL

LAYOUT

Default layout [SAVE] [SAVE AS] [NEW]

	1	2	3	4	5	6	7	8	9	10	11	12
A	S1	S1	C1	C1	C2	C2	C1	C1	C2	C2	C1	C1
B	S2	S2	U1	U1	U7	U7	U13	U13	U18	U18	U24	U24
C	S3	S3	U2	U2	U8	U8	U14	U14	U19	U19	U25	U25
D	S4	S4	U3	U3	U9	U9	U15	U15	U20	U20	U26	U26
E	S5	S5	U4	U4	U10	U10	U16	U16	U21	U21	U27	U27
F	S6	S6	U5	U5	U11	U11	U17	U17	U22	U22	U28	U28
G	S7	S7	U6	U6	U12	U12	U18	U18	U23	U23	U29	U29
H	S8	S8	B	B	B	B	B	B	B	B	B	B

96 384 [U] [S] [C] [B] [X] [M] [A]

PLATE ---  
PROTOCOL ---  
LAYOUT

	1	2	3	4	5	6	7	8	9	10	11	12
A	●	●	●	●	●	●	●	●	●	●	●	●
B	●	●	●	●	●	●	●	●	●	●	●	●
C	●	●	●	●	●	●	●	●	●	●	●	●
D	●	●	●	●	●	●	●	●	●	●	●	●
E	●	●	●	●	●	●	●	●	●	●	●	●
F	●	●	●	●	●	●	●	●	●	●	●	●
G	●	●	●	●	●	●	●	●	●	●	●	●
H	●	●	●	●	●	●	●	●	●	●	●	●

PLATE TYPE: 96 Well Plate  
READ DIRECTION: Vertical

PANEL: Cell signaling  
15-PLEX

OPERATING MODE: Dual Reporter  
UPTAKE SAMPLE: 30  
TIMEOUT: 40 sec

BEAD TYPE: MagPlex  
DD MIN: 7000  
DD MAX: 17000

[RUN PLATE]



# xMAP INTELLIFLEX® Software



xMAP INTELLIFLEX® instruments include on-board software for plate setup, run acquisition, data management, and system maintenance operations. The software is easy to master, enabling users to optimize workflows, gather performance insights, and export data into common analysis tools.

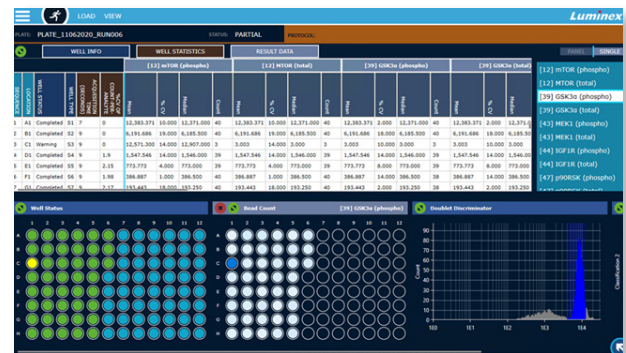
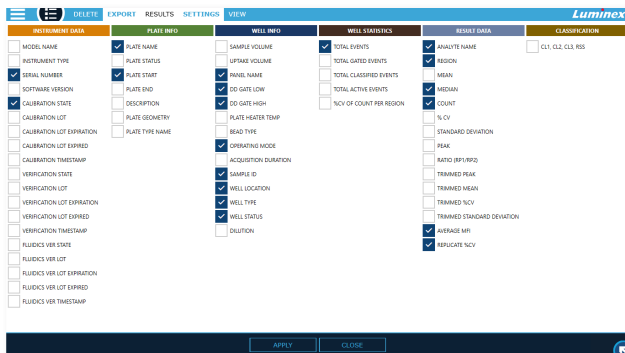
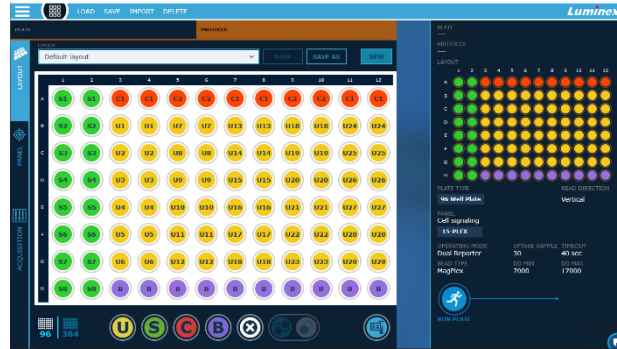
## xMAP INTELLIFLEX® Software offers:

- **Flexibility** - Quickly assemble new plates from previously-defined panels, plate layouts, or groups of acquisition parameters.
- **Import-friendly startup** - Users can quickly and easily import plates and panels from simple CSV files.
- **Fast, intuitive workflows** - Quickly assemble plates and begin acquisitions in as few as 20 seconds. The intuitive workflow design is easy for new users to master with minimal training.
- **New performance insights** - New heat-mapping visualizations in addition to standard xMAP® histogram and dot plot views enable at-a-glance assessment of ongoing run performance.
- **Customizable data export and display** - You can freely customize the data points both displayed on-screen and exported in the new, easy-to-interpret INTELLIFLEX output file format.
- **Backwards-compatible data export** - xMAP INTELLIFLEX® continues to provide an xPONENT®-equivalent output file intended for use in existing third-party xMAP® data analysis software tools.
- **Simplified mid-plate maintenance** - When acquiring challenging sample types, easily add multiple mid-plate cleaning commands with a single click.
- **Security** - xMAP INTELLIFLEX® Software is designed from the ground-up to meet the cybersecurity and robust performance needs of a modern environment and is intended for secure integration into the local domain, enabling IT administrators to remotely manage user security.

### Two optional software modules are available:

21 CFR Part 11	Supports electronic signatures, provides a rich audit trail, enables users to easily export relevant audit entries as part of a comprehensive data-set, and digitally signs data to ensure a high standard of data integrity.	Coming soon
Automation	Provides a modern Application Programming Interface (API) to enable external automation control equipment to connect to and control INTELLIFLEX instruments.	Coming soon

# xMAP INTELLIFLEX® Software



- Auto Maint
- Lot Management
- Cmnds & Routines**
- Probe & Heater
- System Info
- System Status
- Schedule
- Support Utility

## Maintenance Commands and Routines

**Instructions** Run single or multiple commands, or run a routine. Create a routine for the selected commands by clicking "Save As".

Routine Name:  Plate Name:

Commands

Wash	Soak	F3DCAL1	F3DVER1
Alcohol Flush	Warmup	F3DeCAL1	F3DeVER1
Sanitize	Prime	F3DCAL2	F3DVER2
Drain	Backflush	F3DCAL3	Fluidics

	1	2	3	4	5	6	7	8	9	10	11	12	R	1	2	S	1	2	3	
A																				
B																				
C																				
D																				
E																				
F																				
G																				
H																				

A	W	
B		
C		
D		
E		
F	AF	
G		
H		

Command Sequence

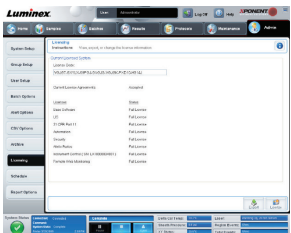
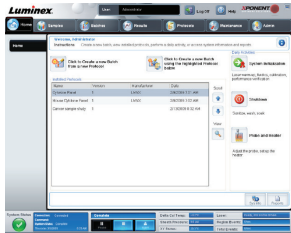
Command	Location	Reagent	Status	Information
Warmup		None	Pending	
Prime		None	Pending	
Alcohol Flush	RB1	70% Alcohol	Pending	
Wash	RA1	DI H2O	Pending	
Wash	RA1	DI H2O	Pending	

Clear

Clear All

# xPONENT® Software for MAGPIX®, Luminex® 200™, and FLEXMAP 3D®

xPONENT® is the sample acquisition software package used by MAGPIX®, Luminex® 200™, and FLEXMAP 3D® instruments. It provides rich data analysis tools and advanced system maintenance features.



**Easy to use** – xPONENT® Software is designed with intuitive navigation tabs and simplified workflows.

**Reduced hands-on time** – Navigation wizards and automated routine operations for startup, shutdown, calibration, performance verification, and analysis enhance system usability and reduce hands-on time.

**Customizable** – The graphical user interface follows the typical assay workflow and a modular architecture supports configurations to meet the needs of any laboratory.

## xPONENT® Software Offers:

- **Automated daily operations** - Use calibration and performance verification kits to automate routine system maintenance, as well as startup, shutdown, calibration, and performance verification operations.
- **Low bead count detection** - The software can be configured to alert you if a user-defined number of successive wells do not reach the minimum bead count.
- **On-the-fly regression analysis** - Quickly and easily reanalyze batch data with alternate curve fit algorithms when needed.
- **Luminex or third-party data analysis programs** - Select from a user-defined set of analysis programs when setting up a protocol and the software will automatically launch the program once data acquisition has been completed.

Missed the upgrade to xPONENT® 4.3? Download the Upgrade Request Form here:

[luminexcorp.com/download/xPONENT-4-3-upgrade-request-form/](http://luminexcorp.com/download/xPONENT-4-3-upgrade-request-form/)

# xPONENT® Software Options

## xPONENT® 4.3 upgrades

<p>All upgrade kits include a Win10 PC with xPONENT® 4.3 pre-installed.</p> <p>Customizable options (fees may apply):</p> <ul style="list-style-type: none"> <li>• RUO or IVD labeled version</li> <li>• Monitor</li> <li>• Additional software modules</li> <li>• IQ/OQ service (only applicable to those within the Luminex Service area)</li> </ul> <p>Please contact your Luminex Business Manager for more details.</p>	xPONENT® 4.3 upgrade kit for Luminex® 200™	XPON-UPGRD-LX
	xPONENT® 4.3 upgrade kit for MAGPIX®	XPON-UPGRD-MAGPIX
	xPONENT® 4.3 upgrade kit for FLEXMAP 3D®	XPON-UPGRD-FM3D
Four optional software modules are available*		
Security	The secure xPONENT® package includes all the basic functionality and allows an administrator to set up user access levels.	XPON-SECURITY
21 CFR Part 11 (Security Module Included)	For laboratories working under the FDA's 21 CFR Part 11 regulations, xPONENT® offers multi-level user management, a full audit trail, electronic records, and electronic signatures.	XPON-21CFR
Automation	The automation module, along with a device driver, enables communication between the reader and a front-end automation platform. Luminex device drivers are offered by many automation providers. For more information on available drivers, please contact Luminex Technical Support.	XPON-AUTO
LIS†	The LIS connectivity module supports communication with an external Laboratory Information System (LIS) by allowing the export of patient result data and the import of patient sample information in ASTM format. Connection to your LIS may require the use of middleware. For more information on LIS and middleware solutions, please contact Luminex Technical Support.	XPON-LIS

\*Additional costs may apply. Contact Luminex for more details and pricing.

†Validation of LIS compatibility must be performed by the end user.

## Regulatory Compliance Program:

Installation Qualification and Operational Qualification (IQ/OQ) procedures are an integral part of any validation program for newly installed or relocated instruments. Additional yearly OQ services can also be ordered on an annual basis. Luminex IQ/OQ protocols provide the documented evidence your lab needs to prove that your Luminex instrument was installed correctly and is operating according to specifications. These documents can be used to fulfill a range of quality management requirements.





## Microspheres

xMAP® Technology uses color-coded microspheres (“beads”) to test for multiple targets from a single sample. Depending on your xMAP instrument, the application, and your analytes of interest, there are different bead types that can be used to produce the best results.

### xMAP® Microspheres

Application	Microsphere	Type	Regions Available	Concentrations Available (million beads/mL)	Vial Sizes Available
All-Purpose	MagPlex®	Magnetic	1-500	2.5 (10 regions only) & 12.5	1 mL, 4 mL, custom*
All-Purpose	MicroPlex®	Non-magnetic	1-100	12.5	1 mL, 4 mL, 16 mL
Nucleic Acid	MagPlex-TAG™	Magnetic	1-150†	2.5	1 mL
Protein	LumAvidin®	Non-magnetic	1-100	2.5	1 mL
Protein	MagPlex®-Avidin Microspheres	Magnetic	1-100‡	2.5	1 mL
Protein	SeroMAP™	Non-magnetic	1-100	12.5	4 mL

\*Please see the MagPlex® Custom Volume Ordering Guidelines online or contact Luminex Sales Support to inquire about custom volume options.

†70 Group C regions are available on a built-to-order basis and may require minimum order quantities and longer lead times. Please contact Luminex Sales Support to learn more before ordering.

‡30 Group A regions are available off-the-shelf. The other 70 regions from Groups A, B, and C are built to order. These additional regions may require minimum order quantities and longer lead times. Please contact Luminex Sales Support to learn more before ordering.

**Microsphere Shelf Life:** The shelf life of xMAP microspheres is the length of time after manufacturing during which a microsphere should be used for coupling to a capture molecule. Once coupled, microspheres are generally stable for years. However, microsphere stability will vary depending on a variety of customer-defined factors (e.g., molecule coupled, buffer used, storage temperatures, etc.). Luminex recommends that you verify the stability of coupled microspheres in your own lab.

### Other Reagents and Accessories

- **Instrument Reagents** - xMAP® instrument reagents include sheath fluid, drive fluid, and instrument calibration and verification kits.
- **Assay Development Reagents** - Reagents such as the xMAP® Antibody Coupling Kit and the MagPlex® Monitoring Microspheres streamline the assay development process.
- **Accessories** - For MagPlex assays, the magnetic plate and tube separators make bead washes fast and easy.
- **Reagent Lead Times** - Most reagents ship within three days of order receipt. However, there are some reagents that are built to order and may require longer than normal lead times. Please contact your Luminex representative to learn more.

For more information, download the xMAP Cookbook at [info.luminexcorp.com/en-us/research/download-the-xMAP-cookbook](http://info.luminexcorp.com/en-us/research/download-the-xMAP-cookbook).

# MagPlex® Microspheres

MagPlex® Microspheres offer improved washing efficiency, can plex up to 500 targets, and are compatible with all xMAP® instruments. Similar to MicroPlex® Microspheres, MagPlex Microspheres are carboxylated polystyrene micro-particles (“beads”) that have been dyed into spectrally distinct sets (or “regions”) allowing them to be individually identified by an xMAP instrument. These uniquely coded beads provide you with a flexible platform to perform multiple assays in a single well.

All microspheres are general use components for further development of xMAP bioassays. MagPlex Microspheres are available at concentrations of 2.5 million and 12.5 million beads/mL, and can be ordered in 1 mL and 4 mL vial sizes. MagPlex Microspheres are also offered in a variety of custom volumes. Please see the **MagPlex Custom Volume Ordering Guidelines** online or contact Luminex Sales Support to inquire about custom volume options.

## MagPlex® Microspheres at a Glance:

- Surface carboxyl groups
- Superparamagnetism
- 500 regions available
- Compatible with all xMAP instruments
- Multiple concentrations available supporting both small scale and high-throughput applications
- Same reliable coupling chemistry as MicroPlex microspheres
- Dramatically improved washing efficiency
- Ideal for automated applications
- No need for expensive filter plates

Vial Size	Concentration (millions/mL)	# of Regions Available	Part Number*
1 mL	2.5	10	MC100XX-ID
1 mL	12.5	500	MC1XXXX-01
4 mL	12.5	80	MC10XXX-04

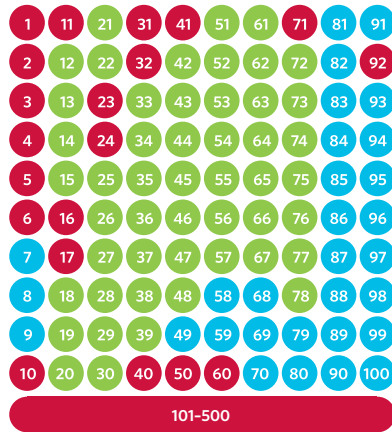
*IMPORTANT: MagPlex® Microspheres require the use of xPONENT® Software.*

*\*Refer to following page for part numbers specific to each microsphere region.*



# MagPlex® Microsphere Part Numbers

500 MagPlex® Regions Available



Compatible with:

All xMAP® Instruments

Luminex® 200™, FLEXMAP 3D®, and  
xMAP INTELLIFLEX®

FLEXMAP 3D® and xMAP INTELLIFLEX®

**Shelf Life:** Microspheres within groups A and B will ship with no less than a 6 month shelf life. Microspheres within group C will ship with no less than a 3-month shelf life.

Actual shelf life will vary depending on available inventory. We cannot guarantee a specific shelf life other than the minimums stated here.

Available in Low Concentration

## Group A (50) All xMAP® Instruments

Reg.	Part #	Reg.	Part #
12	MC10012-YY	45	MC10045-YY
13	MC10013-YY	46	MC10046-YY
14	MC10014-YY	47	MC10047-YY
15	MC10015-YY	48	MC10048-YY
18	MC10018-YY	51	MC10051-YY
19	MC10019-YY	52	MC10052-YY
20	MC10020-YY	53	MC10053-YY
21	MC10021-YY	54	MC10054-YY
22	MC10022-YY	55	MC10055-YY
25	MC10025-YY	56	MC10056-YY
26	MC10026-YY	57	MC10057-YY
27	MC10027-YY	61	MC10061-YY
28	MC10028-YY	62	MC10062-YY
29	MC10029-YY	63	MC10063-YY
30	MC10030-YY	64	MC10064-YY
33	MC10033-YY	65	MC10065-YY
34	MC10034-YY	66	MC10066-YY
35	MC10035-YY	67	MC10067-YY
36	MC10036-YY	72	MC10072-YY
37	MC10037-YY	73	MC10073-YY
38	MC10038-YY	74	MC10074-YY
39	MC10039-YY	75	MC10075-YY
42	MC10042-YY	76	MC10076-YY
43	MC10043-YY	77	MC10077-YY
44	MC10044-YY	78	MC10078-YY

## Group B (30)

Luminex® 200™, FLEXMAP 3D®,  
and xMAP INTELLIFLEX®

Reg.	Part #	Reg.	Part #
7	MC10007-YY	85	MC10085-YY
8	MC10008-YY	86	MC10086-YY
9	MC10009-YY	87	MC10087-YY
49	MC10049-YY	88	MC10088-YY
58	MC10058-YY	89	MC10089-YY
59	MC10059-YY	90	MC10090-YY
68	MC10068-YY	91	MC10091-YY
69	MC10069-YY	93	MC10093-YY
70	MC10070-YY	94	MC10094-YY
79	MC10079-YY	95	MC10095-YY
80	MC10080-YY	96	MC10096-YY
81	MC10081-YY	97	MC10097-YY
82	MC10082-YY	98	MC10098-YY
83	MC10083-YY	99	MC10099-YY
84	MC10084-YY	100	MC10100-YY

Vial Sizes: [-YY] = [-01] for 1 mL, [-04]  
for 4 mL, or [-1D] for 1 mL low  
concentration.

## Group C (420)\* FLEXMAP 3D® and xMAP INTELLIFLEX®

Reg.	Part Number
1	MC12001-01
2	MC12002-01
3	MC12003-01
4	MC12004-01
5	MC12005-01
6	MC12006-01
10	MC12010-01
11	MC12011-01
16	MC12016-01
17	MC12017-01
23	MC12023-01
24	MC12024-01
31	MC12031-01
32	MC12032-01
40	MC12040-01
41	MC12041-01
50	MC12050-01
60	MC12060-01
71	MC12071-01
92	MC12092-01
101+	MC10XXX-01

[XXX] = region # >100

**NOTE:** Group C regions are only available in 1 mL vial sizes. Contact Luminex Sales Support to inquire about custom fill options.

**NOTE:** Group C regions <100 have MC12XXX catalog numbers.

# MagPlex-TAG™ Microspheres

MagPlex-TAG™ Microspheres are oligonucleotide-coupled polystyrene microparticles (“beads”) that have been dyed into spectrally distinct sets (or “regions”), allowing them to be individually identified by an xMAP® instrument.

Each one of the color-coded beads has a unique 24 base DNA sequence called an “anti-TAG” covalently coupled to its surface. These beads enable you to quickly and easily design custom bead arrays simply by adding a complementary “TAG” sequence to the primer or probes in your assay and hybridizing those TAGs to the anti-TAG sequence on the corresponding microsphere.

For a complete list of the TAG and anti-TAG sequences for each of the 150 available microspheres, visit [luminexcorp.com/MagPlex-TAG-microspheres/](http://luminexcorp.com/MagPlex-TAG-microspheres/).

The MagPlex-MixTAG<sub>80</sub> product is a mixture of 80 (Group A & B) MagPlex-TAG Microsphere regions. This product is intended to facilitate the development of nucleic acid arrays with 80 targets or fewer. As each microsphere only reacts to nucleotides strands containing their specific complementary TAG sequence, unused regions in assays of less than 80 targets will not be detected by the instrument and will be excluded in the resulting data set.

MagPlex-MixTAG<sub>80</sub> is intended for Luminex® 200™ and FLEXMAP 3D® instruments running xPONENT® Software only. Although the microsphere mixture can be used with the MAGPIX® instrument, MAGPIX will only detect 50 of the 80 regions in the mixture.

## MagPlex-TAG™ Microspheres at a Glance:

- 150 unique 24-mer surface anti-TAG DNA sequences
- 150 regions available (each with unique anti-TAG)\*
- Compatible with all xMAP instruments
- 2.5 million beads/mL
- Proven xTAG® technology
- Improved washing efficiency
- Ideal for automated applications
- No need for expensive filter plates or oligo coupling
- Convenient 2.5 million bead/mL concentration for improved handling

Vial Size	Concentration (millions/mL)	# of Regions Available	Part Number*
1 mL	2.5	150	MTAG-XXXX
2 mL	2.5 (per region)	80 (mixed)	MTAG-MIX80-02

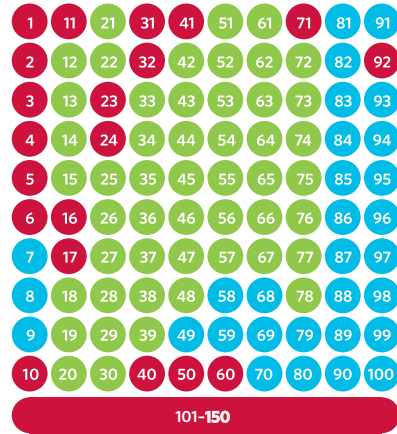
**IMPORTANT:** MagPlex-TAG™ Microspheres require the use of xPONENT® Software.

\*Refer to following page for part numbers specific to each microsphere region.

\*MagPlex-TAG Group C regions are built to order. Please contact your Luminex representative to inquire about minimum order requirements and lead times for these regions.

# MagPlex-TAG™ Microsphere Part Numbers

## 150 MagPlex TAG™ Regions Available



Compatible with:

All xMAP® Instruments

Luminex® 200™, FLEXMAP 3D®, and  
xMAP INTELLIFLEX®

FLEXMAP 3D® and xMAP INTELLIFLEX®

**Shelf Life:** Microspheres within Groups A and B will ship with no less than a 6-month shelf life. Microspheres within Group C will ship with no less than a 3-month shelf life.

Actual shelf life will vary depending on available inventory. We cannot guarantee a specific shelf life other than the minimums stated here.

Contact Luminex Sales Support to inquire about custom fill options.

Refer to product webpage at [www.luminexcorp.com](http://www.luminexcorp.com) for the anti-TAG sequences of each region.

\*MagPlex-TAG™ Group C regions are built to order. Please contact your Luminex representative to inquire about minimum order requirements and lead times for these regions.

## Group A (50) All xMAP® Instruments

Reg.	Part #	Reg.	Part #
12	MTAG-A012	45	MTAG-A045
13	MTAG-A013	46	MTAG-A046
14	MTAG-A014	47	MTAG-A047
15	MTAG-A015	48	MTAG-A048
18	MTAG-A018	51	MTAG-A051
19	MTAG-A019	52	MTAG-A052
20	MTAG-A020	53	MTAG-A053
21	MTAG-A021	54	MTAG-A054
22	MTAG-A022	55	MTAG-A055
25	MTAG-A025	56	MTAG-A056
26	MTAG-A026	57	MTAG-A057
27	MTAG-A027	61	MTAG-A061
28	MTAG-A028	62	MTAG-A062
29	MTAG-A029	63	MTAG-A063
30	MTAG-A030	64	MTAG-A064
33	MTAG-A033	65	MTAG-A065
34	MTAG-A034	66	MTAG-A066
35	MTAG-A035	67	MTAG-A067
36	MTAG-A036	72	MTAG-A072
37	MTAG-A037	73	MTAG-A073
38	MTAG-A038	74	MTAG-A074
39	MTAG-A039	75	MTAG-A075
42	MTAG-A042	76	MTAG-A076
43	MTAG-A043	77	MTAG-A077
44	MTAG-A044	78	MTAG-A078

## Group B (30) Luminex® 200™, FLEXMAP 3D®, and xMAP INTELLIFLEX®

Reg.	Part #	Reg.	Part #
7	MTAG-B007	85	MTAG-B085
8	MTAG-B008	86	MTAG-B086
9	MTAG-B009	87	MTAG-B087
49	MTAG-B049	88	MTAG-B088
58	MTAG-B058	89	MTAG-B089
59	MTAG-B059	90	MTAG-B090
68	MTAG-B068	91	MTAG-B091
69	MTAG-B069	93	MTAG-B093
70	MTAG-B070	94	MTAG-B094
79	MTAG-B079	95	MTAG-B095
80	MTAG-B080	96	MTAG-B096
81	MTAG-B081	97	MTAG-B097
82	MTAG-B082	98	MTAG-B098
83	MTAG-B083	99	MTAG-B099
84	MTAG-B084	100	MTAG-B100

Available in 1 mL vial sizes only.

## Group C (70)\* FLEXMAP 3D® and xMAP INTELLIFLEX®

Reg.	Part Number
1	MTAG-C001
2	MTAG-C002
3	MTAG-C003
4	MTAG-C004
5	MTAG-C005
6	MTAG-C006
10	MTAG-C010
11	MTAG-C011
16	MTAG-C016
17	MTAG-C017
23	MTAG-C023
24	MTAG-C024
31	MTAG-C031
32	MTAG-C032
40	MTAG-C040
41	MTAG-C041
50	MTAG-C050
60	MTAG-C060
71	MTAG-C071
92	MTAG-C092
101+	MTAG-CXXX

[XXX] = region # >100

# MagPlex®-Avidin Microspheres

MagPlex®-Avidin Microspheres are avidin-coupled magnetic microparticles (“beads”) that have been color-coded into 100 spectrally distinct sets, or “regions.” Similar to an avidin-coated ELISA plate, when reacted with a biotinylated ligand such as a peptide, each of these beads can be used as the substrate on which an assay can be performed. Because each of the beads is uniquely color-coded, they can be quickly distinguished by an xMAP® instrument, allowing for the interrogation of up to 100 different analytes simultaneously from a single sample.

All microspheres are general use components for further manufacture of xMAP bioassays. MagPlex-Avidin Microspheres are available at a concentration of 2.5 million beads/mL and can be ordered in 1 mL vial sizes. Please contact Luminex Sales Support to inquire about custom options.

## MagPlex®-Avidin Microspheres at a Glance:

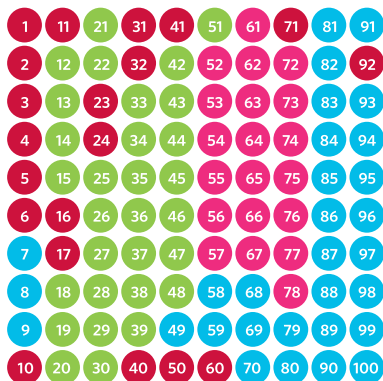
- Avidin protein-coated surface
- 100 regions available
- Compatible with all xMAP instruments
- 2.5 million beads/mL
- Near-covalent biotin-binding chemistry
- Ideal for coupling small molecules, like biotinylated peptides
- Suitable for protein and immunogenicity applications
- Superparamagnetic
- No need for expensive filter plates

Vial Size	Concentration (millions/mL)	# of Regions Available	Part Number*
1 mL	2.5	100	MA-AXXX-01 MA-BXXX-01 MA-CXXX-01

*\*Refer to following page for part numbers specific to each microsphere region.*

# MagPlex®-Avidin Microspheres Part Numbers

100 MagPlex®-Avidin Regions Available



Compatible with:

All xMAP® Instruments

Luminex® 200™, FLEXMAP 3D®, and  
xMAP INTELLIFLEX®

FLEXMAP 3D® and xMAP INTELLIFLEX®

**Shelf Life:** All MagPlex®-Avidin Microspheres will ship with no less than a 3-month shelf life.

Actual shelf life will vary depending on available inventory. We cannot guarantee a specific shelf life other than the minimums stated here.

## Group A (30)

All xMAP® Instruments

Immediate Ordering

Reg.	Part #
12	MA-A012-01
13	MA-A013-01
14	MA-A014-01
15	MA-A015-01
18	MA-A018-01
19	MA-A019-01
20	MA-A020-01
21	MA-A021-01
22	MA-A022-01
25	MA-A025-01
26	MA-A026-01
27	MA-A027-01
28	MA-A028-01
29	MA-A029-01
30	MA-A030-01
33	MA-A033-01
34	MA-A034-01
35	MA-A035-01
36	MA-A036-01
37	MA-A037-01
38	MA-A038-01
39	MA-A039-01
42	MA-A042-01
43	MA-A043-01
44	MA-A044-01
45	MA-A045-01
46	MA-A046-01
47	MA-A047-01
48	MA-A048-01
51	MA-A051-01

## Group A (20)\*

All xMAP® Instruments

Built-to-Order Only

Reg.	Part #
52	MA-A052-01
53	MA-A053-01
54	MA-A054-01
55	MA-A055-01
56	MA-A056-01
57	MA-A057-01
61	MA-A061-01
62	MA-A062-01
63	MA-A063-01
64	MA-A064-01
65	MA-A065-01
66	MA-A066-01
67	MA-A067-01
72	MA-A072-01
73	MA-A073-01
74	MA-A074-01
75	MA-A075-01
76	MA-A076-01
77	MA-A077-01
78	MA-A078-01

## Group B (30)\*

Luminex® 200™, FLEXMAP 3D®,  
and xMAP INTELLIFLEX®

Built-to-Order Only

Reg.	Part #	Reg.	Part #
7	MA-B007-01	85	MA-B085-01
8	MA-B008-01	86	MA-B086-01
9	MA-B009-01	87	MA-B087-01
49	MA-B049-01	88	MA-B088-01
58	MA-B058-01	89	MA-B089-01
59	MA-B059-01	90	MA-B090-01
68	MA-B068-01	91	MA-B091-01
69	MA-B069-01	93	MA-B093-01
70	MA-B070-01	94	MA-B094-01
79	MA-B079-01	95	MA-B095-01
80	MA-B080-01	96	MA-B096-01
81	MA-B081-01	97	MA-B097-01
82	MA-B082-01	98	MA-B098-01
83	MA-B083-01	99	MA-B099-01
84	MA-B084-01	100	MA-B100-01

## Group C (30)\*

FLEXMAP 3D® and  
xMAP INTELLIFLEX®

Built-to-Order Only

Reg.	Part Number
1	MA-C001-01
2	MA-C002-01
3	MA-C003-01
4	MA-C004-01
5	MA-C005-01
6	MA-C006-01
10	MA-C010-01
11	MA-C011-01
16	MA-C016-01
17	MA-C017-01
23	MA-C023-01
24	MA-C024-01
31	MA-C031-01
32	MA-C032-01
40	MA-C040-01
41	MA-C041-01
50	MA-C050-01
60	MA-C060-01
71	MA-C071-01
92	MA-C092-01

Only available in  
1 mL vial sizes.

\*Please contact your Luminex representative to inquire about minimum order requirements and lead times for built-to-order regions.

# MagPlex® Monitoring Microspheres

MagPlex® Monitoring Microspheres are magnetic polystyrene beads that aid in monitoring assay and instrument performance. MagPlex Monitoring Microspheres provide insight into factors impacting target median fluorescent intensity (MFI) values, including instrument fluctuations or user error.

MagPlex Monitoring Microspheres are available in two formats. MagPlex RP1 Monitor beads produce fluorescence detected in region 45 and the RP1 channel of all xMAP® instruments, and MagPlex RP2 Monitor beads produce fluorescence detected in region 222 and the RP2 channel of the xMAP INTELLIFLEX® DR-SE System.

All microspheres are general use components for further manufacture of xMAP bioassays. MagPlex Monitoring Microspheres are available at a concentration of 12.5 million beads/mL and can be ordered in 1 mL vial sizes. Please contact Luminex Sales Support to inquire about custom vial sizes.

## MagPlex® Monitoring Microspheres at a Glance:

- Superparamagnetic
- MagPlex RP1 Monitor Beads are compatible with all xMAP instruments
- MagPlex RP2 Monitor Beads are compatible with new violet channel on xMAP INTELLIFLEX DR-SE
- Available at the same concentration as region beads (12.5 million beads/mL)
- Well-to-well assay performance monitoring
- Compatible with proteomic and genomic applications
- Eliminate instrument or user errors as source of unexpected results

Product Name	Vial Size	Concentration (millions/mL)	Part Number
MagPlex® RP1 Monitor	1 mL	12.5	MRP1-045-01
MagPlex® RP2 Monitor	1 mL	12.5	MRP2-222-01

*Shelf Life: MagPlex Monitoring Microspheres will ship with no less than a 3-month shelf life.*

*Actual shelf life will depend on available inventory. We cannot guarantee a specific shelf life other than the minimums stated here.*

# MicroPlex® Microspheres



MicroPlex® Microspheres are carboxylated polystyrene microparticles (“beads”) that have been color-coded into 100 spectrally distinct sets, or “regions.”

Each of these bead regions can be quickly distinguished by an xMAP® instrument, allowing for the interrogation of up to 100 different analytes simultaneously from a single sample.

All microspheres are general use components for further manufacture of xMAP bioassays. MicroPlex Microspheres are available at a concentration of 12.5 million beads/mL and can be ordered in 1 mL, 4 mL, and 16 mL vial sizes. Please contact Luminex Sales Support to inquire about custom volume options.

## MicroPlex® Microspheres at a Glance:

- Surface carboxyl groups
- 100 regions available
- Compatible with Luminex® 200™, FLEXMAP 3D®, and xMAP INTELLIFLEX®
- Multiple vial sizes available supporting both small scale and higher-throughput applications.
- 12.5 million beads/mL
- Suitable for both protein and nucleic acid applications

Vial Size	Concentration (million/mL)	# of Regions Available	Part Number*
1 mL	12.5	100	LC10XXX-01
4 mL	12.5	100	LC10XXX-04
16 mL	12.5	100	LC10XXX-16

*IMPORTANT: MicroPlex® Microspheres are not compatible with the MAGPIX® instrument.*

*\*Refer to following page for part numbers specific to each microsphere region.*

# MicroPlex<sup>®</sup> Microsphere Part Numbers

## 100 MicroPlex<sup>®</sup> Regions Available

1	11	21	31	41	51	61	71	81	91
2	12	22	32	42	52	62	72	82	92
3	13	23	33	43	53	63	73	83	93
4	14	24	34	44	54	64	74	84	94
5	15	25	35	45	55	65	75	85	95
6	16	26	36	46	56	66	76	86	96
7	17	27	37	47	57	67	77	87	97
8	18	28	38	48	58	68	78	88	98
9	19	29	39	49	59	69	79	89	99
10	20	30	40	50	60	70	80	90	100

Compatible with:

**Luminex<sup>®</sup> 200<sup>™</sup>, FLEXMAP 3D<sup>®</sup>, and xMAP INTELLIFLEX<sup>®</sup>**

**Shelf Life:** All MicroPlex<sup>®</sup> Microspheres will ship with no less than a 6-month shelf life.

Actual shelf life will vary depending on available inventory. We cannot guarantee a specific shelf life other than the minimums stated here.

Reg.	Part Number
1	LC10001-YY
2	LC10002-YY
3	LC10003-YY
4	LC10004-YY
5	LC10005-YY
6	LC10006-YY
7	LC10007-YY
8	LC10008-YY
9	LC10009-YY
10	LC10010-YY
11	LC10011-YY
12	LC10012-YY
13	LC10013-YY
14	LC10014-YY
15	LC10015-YY
16	LC10016-YY
17	LC10017-YY
18	LC10018-YY
19	LC10019-YY
20	LC10020-YY
21	LC10021-YY

Reg.	Part Number
22	LC10022-YY
23	LC10023-YY
24	LC10024-YY
25	LC10025-YY
26	LC10026-YY
27	LC10027-YY
28	LC10028-YY
29	LC10029-YY
30	LC10030-YY
31	LC10031-YY
32	LC10032-YY
33	LC10033-YY
34	LC10034-YY
35	LC10035-YY
36	LC10036-YY
37	LC10037-YY
38	LC10038-YY
39	LC10039-YY
40	LC10040-YY
41	LC10041-YY
42	LC10042-YY

Reg.	Part Number
43	LC10043-YY
44	LC10044-YY
45	LC10045-YY
46	LC10046-YY
47	LC10047-YY
48	LC10048-YY
49	LC10049-YY
50	LC10050-YY
51	LC10051-YY
52	LC10052-YY
53	LC10053-YY
54	LC10054-YY
55	LC10055-YY
56	LC10056-YY
57	LC10057-YY
58	LC10058-YY
59	LC10059-YY
60	LC10060-YY
61	LC10061-YY
62	LC10062-YY
63	LC10063-YY

Reg.	Part Number
64	LC10064-YY
65	LC10065-YY
66	LC10066-YY
67	LC10067-YY
68	LC10068-YY
69	LC10069-YY
70	LC10070-YY
71	LC10071-YY
72	LC10072-YY
73	LC10073-YY
74	LC10074-YY
75	LC10075-YY
76	LC10076-YY
77	LC10077-YY
78	LC10078-YY
79	LC10079-YY
80	LC10080-YY
81	LC10081-YY
82	LC10082-YY
83	LC10083-YY
84	LC10084-YY

Reg.	Part Number
85	LC10085-YY
86	LC10086-YY
87	LC10087-YY
88	LC10088-YY
89	LC10089-YY
90	LC10090-YY
91	LC10091-YY
92	LC10092-YY
93	LC10093-YY
94	LC10094-YY
95	LC10095-YY
96	LC10096-YY
97	LC10097-YY
98	LC10098-YY
99	LC10099-YY
100	LC10100-YY

### Vial Sizes:

[-YY] = [-01] for 1 mL;  
[-04] for 4 mL; or  
[-16] for 16 mL



# LumAvidin® Microspheres



LumAvidin® Microspheres are avidin-coupled polystyrene microparticles (“beads”) that have been color-coded into 100 spectrally distinct sets, or “regions.” Similar to an avidin-coated ELISA plate, when reacted with a biotinylated ligand such as a peptide, each of these beads can be used as the substrate on which an assay can be performed. Because each of the beads is uniquely color-coded, they can be quickly distinguished by an xMAP® instrument, allowing for the interrogation of up to 100 different analytes simultaneously from a single sample.

All microspheres are general use components for further manufacture of xMAP bioassays. LumAvidin Microspheres are available at a concentration of 2.5 million beads/mL and can be ordered in 1 mL vial sizes. Custom vial sizes are available for LumAvidin Microspheres. Please contact Luminex Sales Support to inquire about custom vial sizes.

## LumAvidin® Microspheres at a Glance:

- Avidin protein-coated surface
- 100 regions available
- Compatible with Luminex® 200™, FLEXMAP 3D®, and xMAP INTELLIFLEX®
- 1 mL vial size
- 2.5 million beads/mL
- Near-covalent biotin-binding chemistry
- Ideal for coupling small molecules, like biotinylated peptides
- Suitable for protein and immunogenicity applications
- No need to couple avidin to beads

Vial Size	Concentration (millions/mL)	# of Regions Available	Part Number*
1 mL	2.5	100	L100-LXXX-01

*IMPORTANT: LumAvidin® Microspheres are not compatible with the MAGPIX® instrument.*

*\*Refer to following page for part numbers specific to each microsphere region.*

# LumAvidin® Microspheres Part Numbers

## 100 LumAvidin® Regions Available



Compatible with:

**Luminex® 200™, FLEXMAP 3D®, and xMAP INTELLIFLEX®**

**Shelf Life:** All LumAvidin® Microspheres will ship with no less than a 3-month shelf life.

Actual shelf life will vary depending on available inventory. We cannot guarantee a specific shelf life other than the minimums stated here.

Reg.	Part Number	Reg.	Part Number	Reg.	Part Number	Reg.	Part Number	Reg.	Part Number
1	L100-L101-01	22	L100-L122-01	43	L100-L143-01	64	L100-L164-01	85	L100-L185-01
2	L100-L102-01	23	L100-L123-01	44	L100-L144-01	65	L100-L165-01	86	L100-L186-01
3	L100-L103-01	24	L100-L124-01	45	L100-L145-01	66	L100-L166-01	87	L100-L187-01
4	L100-L104-01	25	L100-L125-01	46	L100-L146-01	67	L100-L167-01	88	L100-L188-01
5	L100-L105-01	26	L100-L126-01	47	L100-L147-01	68	L100-L168-01	89	L100-L189-01
6	L100-L106-01	27	L100-L127-01	48	L100-L148-01	69	L100-L169-01	90	L100-L190-01
7	L100-L107-01	28	L100-L128-01	49	L100-L149-01	70	L100-L170-01	91	L100-L191-01
8	L100-L108-01	29	L100-L129-01	50	L100-L150-01	71	L100-L171-01	92	L100-L192-01
9	L100-L109-01	30	L100-L130-01	51	L100-L151-01	72	L100-L172-01	93	L100-L193-01
10	L100-L110-01	31	L100-L131-01	52	L100-L152-01	73	L100-L173-01	94	L100-L194-01
11	L100-L111-01	32	L100-L132-01	53	L100-L153-01	74	L100-L174-01	95	L100-L195-01
12	L100-L112-01	33	L100-L133-01	54	L100-L154-01	75	L100-L175-01	96	L100-L196-01
13	L100-L113-01	34	L100-L134-01	55	L100-L155-01	76	L100-L176-01	97	L100-L197-01
14	L100-L114-01	35	L100-L135-01	56	L100-L156-01	77	L100-L177-01	98	L100-L198-01
15	L100-L115-01	36	L100-L136-01	57	L100-L157-01	78	L100-L178-01	99	L100-L199-01
16	L100-L116-01	37	L100-L137-01	58	L100-L158-01	79	L100-L179-01	100	L100-L200-01
17	L100-L117-01	38	L100-L138-01	59	L100-L159-01	80	L100-L180-01		
18	L100-L118-01	39	L100-L139-01	60	L100-L160-01	81	L100-L181-01		
19	L100-L119-01	40	L100-L140-01	61	L100-L161-01	82	L100-L182-01		
20	L100-L120-01	41	L100-L141-01	62	L100-L162-01	83	L100-L183-01		
21	L100-L121-01	42	L100-L142-01	63	L100-L163-01	84	L100-L184-01		

Only available in 1 mL vial sizes.

Contact Luminex Sales Support to inquire about custom fill options and lead times.

# SeroMAP™ Microspheres



SeroMAP™ Microspheres are a special formulation of MicroPlex® Microspheres which have been optimized to reduce non-specific binding in serology assays. These beads are carboxylated polystyrene microparticles that have been color-coded into 100 spectrally distinct sets, or “regions.” Each of these regions can be quickly distinguished by an xMAP® instrument, allowing for the interrogation of up to 100 different analytes simultaneously from a single sample.

All microspheres are general use components for further manufacture of xMAP bioassays. SeroMAP Microspheres are available at a concentration of 12.5 million beads/mL and are only available in a 4 mL vial size. Please contact Luminex Sales Support to inquire about custom vial sizes.

## SeroMAP™ Microspheres at a Glance:

- Specifically designed for protein-based serological applications
- 100 regions available
- Compatible with Luminex® 200™, FLEXMAP 3D®, and xMAP INTELLIFLEX®
- 4 mL vial size only
- 12.5 million beads/mL
- Lower non-specific binding

Vial Size	Concentration (millions/mL)	# of Regions Available	Part Number*
4 mL	12.5	100	L100-SXXX-04

*IMPORTANT: SeroMAP™ Microspheres are not compatible with the MAGPIX® instrument.*

*\*Refer to following page for part numbers specific to each microsphere region.*

# SeroMAP™ Microspheres Part Numbers

## 100 SeroMAP™ Regions Available



Compatible with:

**Luminex® 200™, FLEXMAP 3D®, and xMAP INTELLIFLEX®**

**Shelf Life:** All SeroMAP™ Microspheres will ship with no less than a 6-month shelf life.

Actual shelf life will vary depending on available inventory. We cannot guarantee a specific shelf life other than the minimums stated here.

Reg.	Part Number	Reg.	Part Number	Reg.	Part Number	Reg.	Part Number	Reg.	Part Number
1	L100-S001-04	22	L100-S022-04	43	L100-S043-04	64	L100-S064-04	85	L100-S085-04
2	L100-S002-04	23	L100-S023-04	44	L100-S044-04	65	L100-S065-04	86	L100-S086-04
3	L100-S003-04	24	L100-S024-04	45	L100-S045-04	66	L100-S066-04	87	L100-S087-04
4	L100-S004-04	25	L100-S025-04	46	L100-S046-04	67	L100-S067-04	88	L100-S088-04
5	L100-S005-04	26	L100-S026-04	47	L100-S047-04	68	L100-S068-04	89	L100-S089-04
6	L100-S006-04	27	L100-S027-04	48	L100-S048-04	69	L100-S069-04	90	L100-S090-04
7	L100-S007-04	28	L100-S028-04	49	L100-S049-04	70	L100-S070-04	91	L100-S091-04
8	L100-S008-04	29	L100-S029-04	50	L100-S050-04	71	L100-S071-04	92	L100-S092-04
9	L100-S009-04	30	L100-S030-04	51	L100-S051-04	72	L100-S072-04	93	L100-S093-04
10	L100-S010-04	31	L100-S031-04	52	L100-S052-04	73	L100-S073-04	94	L100-S094-04
11	L100-S011-04	32	L100-S032-04	53	L100-S053-04	74	L100-S074-04	95	L100-S095-04
12	L100-S012-04	33	L100-S033-04	54	L100-S054-04	75	L100-S075-04	96	L100-S096-04
13	L100-S013-04	34	L100-S034-04	55	L100-S055-04	76	L100-S076-04	97	L100-S097-04
14	L100-S014-04	35	L100-S035-04	56	L100-S056-04	77	L100-S077-04	98	L100-S098-04
15	L100-S015-04	36	L100-S036-04	57	L100-S057-04	78	L100-S078-04	99	L100-S099-04
16	L100-S016-04	37	L100-S037-04	58	L100-S058-04	79	L100-S079-04	100	L100-S100-04
17	L100-S017-04	38	L100-S038-04	59	L100-S059-04	80	L100-S080-04		
18	L100-S018-04	39	L100-S039-04	60	L100-S060-04	81	L100-S081-04		
19	L100-S019-04	40	L100-S040-04	61	L100-S061-04	82	L100-S082-04		
20	L100-S020-04	41	L100-S041-04	62	L100-S062-04	83	L100-S083-04		
21	L100-S021-04	42	L100-S042-04	63	L100-S063-04	84	L100-S084-04		

Only available in 4 mL vial sizes.

Contact Luminex Sales Support to inquire about custom fill options and lead times.

# xMAP® Antibody Coupling (AbC) Kit



The xMAP® Antibody Coupling Kit, or “AbC” kit, is a reagent kit that contains everything you need to couple an antibody to MagPlex® Microspheres. Similar to an ELISA plate, MagPlex Microspheres can be used as the substrate on which immunoassays can be performed. Unlike a traditional ELISA, however, this method requires much less antibody, sample, and time, with equal or better sensitivity and dynamic range. Since each microsphere is uniquely labeled, multiple immunoassays can be performed simultaneously using the same sample in the same well. Once your desired antibody is coupled to the surface of the bead, you can begin optimizing monoplex or multiplex capture-sandwich immunoassays to suit your needs.

*NOTE: This kit does NOT include microspheres or antibodies.*

## xMAP® Antibody Coupling Kit at a Glance:

- **Hands-on time** = ~40 mins
- **Total turnaround time** = ~3 hours
- Equipped with pre-optimized reagents and buffers (including EDC\*), as well as all required consumables (including reaction tubes, pipettes)
- Easy-to-use protocol

### Kit Capacity

- Small scale: up to 10 reactions of  $5 \times 10^6$  beads/reaction or less
- Large scale: up to 4 reactions of greater than  $5 \times 10^6$  beads/reaction
- Maximum scale:  $12.5 \times 10^6$  beads/reaction

### Bead Coupling Reactions

- Maximum:  $50 \times 10^6$  beads (4 reactions @  $12.5 \times 10^6$  beads/reaction)
- Minimum:  $2.5 \times 10^6$  beads (1 reaction @  $2.5 \times 10^6$  beads/reaction)

Product	Part Number
xMAP® Antibody Coupling Kit	40-50016

**Shelf life:** This kit has a shelf life of 1 year from the date of manufacture. All xMAP AbC kits are guaranteed to have a minimum remaining shelf life of 1 month from the date they ship.

\*EDC is provided in a one-time use configuration.

# Magnetic Separators



## Magnetic Plate Separator

The Luminex Magnetic Plate Separator is a modified plate magnet intended to separate a 96-well plate of MagPlex® Microspheres during assay preparation steps. The side clasps on this magnet have been specially designed to hold a round-bottom plate securely to the magnet, enabling the you quickly invert and decant it over a waste container. Similar to the method used in an ELISA, this manual plate washing method has been shown to effectively remove nearly all of the supernatant from every well on the plate, with virtually no bead carry-over.

### Magnetic Plate Separator Highlights:

- For use in nucleic acid and protein assay preparation
- Designed to be used with the Manual Washing Procedure for MagPlex Microspheres
- ~ 90% less expensive than a typical automated plate washer



## Magnetic Tube Separator

The Luminex 1.5 mL Magnetic Tube Separator is intended for a single reaction tube. Typically used in bead coupling reactions, this magnet can quickly separate 1 mL MagPlex Microspheres from solution and is a handy addition to any xMAP® benchtop.

### Magnetic Tube Separator Highlights:

- For use in bead coupling and single reaction nucleic acid and protein assay preparation
- Ideal for small scale coupling reactions

Product	Part Number
Magnetic Plate Separator	CN-0269-01
Magnetic Separator, 1.5 mL Tube	CN-0288-01

# xMAP® Instrument Reagents



## MAGPIX® Reagents

The MAGPIX® Instrument requires drive fluid to transport the beads to the instrument's optics.

Due to the compact nature of the MAGPIX System, drive fluid is available in small, pre-filled, disposable containers which are stored within the instrument. Each drive fluid container provides enough liquid to read approximately ten 96-well plates and are sold in packages of four.

MAGPIX Systems also use a calibration and a verification kit, both of which support up to 25 runs.



## Luminex® 200™ Reagents

The Luminex® 200™ Instrument requires sheath fluid to transport the beads to the instrument's optics. The Luminex 200 has the option of a 20 L disposable external sheath fluid container or a compact 20X sheath fluid concentrate pack, which can be reconstituted with water to a working volume of 20 L when needed.

The Luminex 200 Instrument also uses a calibration and a verification kit, both of which support up to 25 runs.



## FLEXMAP 3D® Reagents

The FLEXMAP 3D® Instrument requires sheath fluid to transport the beads to the instrument's optics. This instrument has the option of a 20 L disposable external sheath fluid container or a compact 20X sheath fluid concentrate pack, which can be reconstituted with water to a working volume of 20 L when needed.

The FLEXMAP 3D Instrument also uses a calibration and a verification kit, both of which support up to 25 runs.



## xMAP INTELLIFLEX® Reagents

xMAP INTELLIFLEX® Instrument requires sheath fluid to transport the beads to the instrument's optics. This instrument has the option of a 20 L disposable external sheath fluid container or a compact 20X sheath fluid concentrate pack, which can be reconstituted with water to a working volume of 20 L when needed. The system also uses a calibration and a verification kit, both of which support up to 20 runs.

# xMAP® Instrument Reagents

Instrument	Reagent	Pack Size	RUO Part Number*	IVD Part Number†
<b>MAGPIX®</b>	MAGPIX® Calibration Kit	25 uses	MPX-CAL-K25	MPXIVD-CAL-K25
	MAGPIX® Performance Verification Kit	25 uses	MPX-PVER-K25	MPXIVD-PVER-K25
	MAGPIX® Drive Fluid PLUS	4 pack	40-50030	40-50020
<b>Luminex® 200™</b>	Luminex® 200™ Calibration Kit	25 uses	LX2R-CAL-K25	LX200-CAL-K25
	Luminex® 200™ Performance Verification Kit	25 uses	LX2R-PVER-K25	LX200-CON-K25
	xMAP® Sheath Concentrate PLUS (20X)	1 L	40-50023	40-50036
	xMAP® Sheath Fluid PLUS	20 L	40-50021	40-50035
<b>FLEXMAP 3D®</b>	FLEXMAP 3D® Calibration Kit	25 uses	F3D-CAL-K25	F3DIVD-CAL-K25
	FLEXMAP 3D® Performance Verification Kit	25 uses	F3D-PVER-K25	F3DIVD-PVER-K25
	xMAP® Sheath Concentrate PLUS (20X)	1 L	40-50023	40-50036
	xMAP® Sheath Fluid PLUS	20 L	40-50021	40-50035
<b>xMAP INTELLIFLEX®</b>	xMAP INTELLIFLEX® Calibration Kit	20 uses	IFX-CAL-K20	-
	xMAP INTELLIFLEX® Performance Verification Kit	20 uses	IFX-PVER-K20	-
	xMAP® Sheath Concentrate PLUS (20X)	1 L	40-50023	-
	xMAP® Sheath Fluid PLUS	20 L	40-50021	-

\*For Research Use Only. Not for use in diagnostic procedures.

†For In Vitro Diagnostic Use. Products are regions specific and may not be available in your country/region.

*Shelf life: Sheath Fluid PLUS and Drive Fluid PLUS have a guaranteed minimum shelf life of 6 months from the shipment date. Sheath Concentrate PLUS (20X) has a guaranteed 3-month minimum shelf life. Calibration and Verification reagents all have a guaranteed 6-month minimum shelf life from the shipment date.*



# Instrument Service Plans



## Luminex® 200™, FLEXMAP 3D®, and MAGPIX® (North America and Europe)

	Luminex® 200™ & FLEXMAP 3D®				MAGPIX® Only			
	Platinum	Gold	Silver	Bronze	Platinum	Gold	Standard	Bronze*
Emergency repair visits	Unlimited	Unlimited	Unlimited	None	Unlimited	Unlimited	Unlimited	None
Emergency repair costs included in plan	All costs included	All costs included	Travel & labor only	20% Discount off parts only	All costs included	All costs included	All costs included	20% Discount off parts only
Preventative Maintenance visits per year	Two	One	One	One	Two	One	None	One
Onsite response time (business days)	One	Two	Two, after receipt of PO	None guaranteed	One	Two	Two	None guaranteed
Priority scheduling for service requests	Included	Included	Included	None	Included	Included	Included	None
Periodic software updates and modifications	Included	Included	Included	None	Included	Included	Included	None
Software support	Included	Included	Included	None	Included	Included	Included	None
Unlimited 24/7 x 365 remote support	Included	Included	Included	Included	Included	Included	Included	Included
Part number	SLA-Platinum	SLA-Gold	SLA-Silver	SLA-Bronze	SLA-MAGPIX-Plat-PM	SLA-MAGPIX-Gold-PM	SLA-MAGPIX-Standard	SLA-Bronze

\*MAGPIX Bronze packages are available in the EMEA region only.

# Instrument Service Plans

## xMAP INTELLIFLEX® (North America and Europe)

	xMAP INTELLIFLEX®		
	Platinum	Gold	Bronze
Emergency repair visits	Unlimited	Unlimited	None
Emergency repair costs included in plan	All costs included	All costs included	20% Discount off parts only
Preventative Maintenance visits per year	Two	One	One
Onsite response time (business days)	One	Two	None guaranteed
Priority scheduling for service requests	Included	Included	None
Periodic software updates and modifications	Included	Included	None
Software support	Included	Included	None
Unlimited 24/7 x 365 remote support	Included	Included	Included
Part number	SLA-IFLEXDRSE-PLAT SLA-IFLEX-PLATINUM	SLA-IFLEXDRSE-GOLD SLA-IFLEX-GOLD	SLA-IFLEXDRSE-BRONZE SLA-IFLEX-BRONZE

# Instrument Service Plans

## Supported Countries

Countries	Platinum	Gold	Silver	Bronze	MAGPIX® Standard
Austria		●	●	●	●
Bahamas	●	●	●	●	●
Barbados	●	●	●	●	●
Belgium	●	●	●	●	●
Bermuda	●	●	●	●	●
Bulgaria		●	●	●	●
Canada	●	●	●	●	●
Cayman Islands	●	●	●	●	●
China		●			
Croatia		●	●	●	●
Cyprus		●			●
Czech Republic		●	●	●	●
Denmark		●	●	●	●
Dominican Republic	●	●	●	●	●
Estonia		●	●	●	●
Finland		●	●	●	●
France		●	●	●	●
Germany	●	●	●	●	●
Greece		●	●	●	●
Hong Kong		●			
Hungary		●	●	●	●
Iceland		●	●	●	●
Ireland		●	●	●	●
Italy		●	●	●	●

Countries	Platinum	Gold	Silver	Bronze	MAGPIX® Standard
Jamaica	●	●	●	●	●
Japan		●			
Latvia		●	●	●	●
Lithuania		●	●	●	●
Luxembourg	●	●	●	●	●
Malta		●			●
Mexico	●	●	●	●	●
Monaco		●	●	●	●
Netherlands	●	●	●	●	●
Norway		●	●	●	●
Poland		●	●	●	●
Portugal		●	●	●	●
Puerto Rico	●	●	●	●	●
Romania		●	●	●	●
Slovakia		●	●	●	●
Slovenia		●	●	●	●
Spain		●	●	●	●
Sweden		●	●	●	●
Switzerland	●	●	●	●	●
United Kingdom	●	●	●	●	●
United States	●	●	●	●	●
Virgin Islands (US)	●	●	●	●	●

Coverage details may vary by region. Please contact [servicesales@luminexcorp.com](mailto:servicesales@luminexcorp.com) for additional information. The supported countries are subject to change. For the current list of supported countries, please visit [luminexcorp.com/maintenance-and-support/](https://luminexcorp.com/maintenance-and-support/).

# Luminex Learning

## Training with Luminex

Luminex offers standard and customized training courses to enhance your technical knowledge and optimize the use of your Luminex Instrument. It is our top priority to ensure you have the knowledge, skills, and resources needed to get the most from our products. We offer comprehensive, hands-on training. These learning sessions can help build the foundational knowledge needed to take your xMAP® Technology experiments to the next level.



# Luminex Learning Course Offerings

## Explore Courses with Luminex Learning

We offer sessions that cover entire instrument and assay workflows for a variety of our products and technologies:

- **Online Training** – Self-paced, online presentations, simulations, and videos
- **Classroom Training** – Face-to-face training either at a Luminex Learning facility or at a your lab

We also offer “how-to” videos, which can be found in the resources section at the bottom of each of the instrument product pages at [luminexcorp.com](http://luminexcorp.com), on our [YouTube® Channel](#), and in the [Customer Self Help Center](#). These how-to videos cover everything from sample probe height adjustment, and clog removal, to maintenance schedules and more.

Additionally, Luminex courses are approved for continuing education programs in the clinical laboratory sciences by the ASCLS P.A.C.E. Program.

	Format	Part Number
<b>MAGPIX® Training Courses</b>		
MAGPIX® End-User	Classroom	CN-0248-01
MAGPIX® Advanced	Classroom	CN-0248-03
<b>Luminex® 200™ Training Courses</b>		
Luminex® 200™ End-User Overview	Online	CN-0378-01
Luminex® 200™ End-User	Classroom	CN-0211-01
Luminex® 200™ Customer Advanced	Classroom	CN-0211-03
<b>FLEXMAP 3D® Training Courses</b>		
FLEXMAP 3D® End-User	Classroom	CN-0311-01
FLEXMAP 3D® Customer Advanced	Classroom	CN-0424-03
<b>xMAP INTELLIFLEX® Training Courses</b>		
xMAP INTELLIFLEX® End-User	Classroom	CN-0504-01
xMAP INTELLIFLEX® End-User Advanced	Classroom	CN-0504-03
<b>Customer-Developed Assays Training Courses</b>		
Advanced Applications Custom Training Course	Classroom	CN-0068-01
Fundamentals of xMAP® Proteomic Assays	Classroom	CN-0488-01
Fundamentals of xMAP® Nucleic Acid Assays	Classroom	CN-0489-01

LuminexPLORE Lab is a custom services program that uses industry-leading xMAP® Technology to offer researchers a competitive edge for scientific breakthroughs.

Luminex's team of Applications Scientists are experts in immunoassay and genomic assay development using xMAP® and xTAG® technologies. Our technologies currently serve a vast community of researchers and scientists with their own custom needs. Whether you are a new assay developer or trying to accelerate your project, LuminexPLORE Lab can help your lab reach its goals faster.

## Our expertise covers a broad range of scientific applications:

- Allergy testing
- Biomarkers
- Cancer
- Cardiovascular
- Cell signaling
- Cellular metabolism
- Genetics
- Immunology
- Infectious diseases
- Metabolism
- Endocrinology
- Neuroscience
- Proteomic
- Serology
- Stem cells
- Toxicity

## Join our community of xMAP® developers to accelerate your research.

### Available Services:

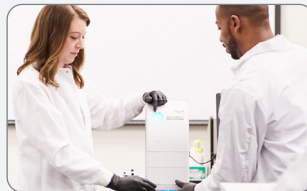
- Antibody pair screening
- Custom coupling
- Custom conjugation
- Sample testing
- Assay development
- Assay optimization
- Assay conversion
- Add-on assay validation options:
  - Precision (intra and inter)
  - Sensitivity (LoD)
  - Cross-reactivity
  - Lot-lot
  - Scale up
- Advanced applications for current users

## Custom Services Workflow



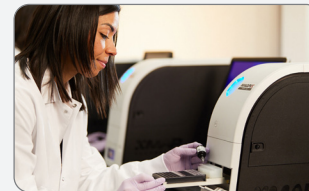
### Step 1

Submit a Custom Services Request.



### Step 2

Consult with an Applications Scientist.



### Step 3

Develop assay with Luminex experts.

Reach out today at [LuminexPLORE@luminexcorp.com](mailto:LuminexPLORE@luminexcorp.com) to consult with our Application Scientists and see what xMAP® and xTAG® can do for you.



Are you interested in commercializing a multiplex assay on a platform that is efficient, flexible, and widely-adopted?



## **xMAP® might be the right technology platform to grow your business.**

There are currently more than 70 Luminex Licensed Technologies Partners that represent a diversity of:

- **Market segments:** Life sciences research, drug and vaccine development, clinical diagnostics, agriculture, and biodefense applications
- **Company sizes:** From a handful of employees to multi-national corporations
- **Geographies:** Our partners work out of Belgium, Canada, China, Estonia, France, Germany, Greece, Japan, Norway, South Korea, Spain, Taiwan, the Netherlands, and the United States
- **Offerings:** IVD and RUO kits, custom assay development, reagents, services, technologies, and testing service providers

Partner with Luminex and have the support you need to get started. Over the past 25 years, Luminex has developed a robust toolkit of resources to support partners in the development and commercialization of xMAP®-based assays.

Visit [info.luminexcorp.com/en-us/become-a-partner](https://info.luminexcorp.com/en-us/become-a-partner) to learn more and to contact the Luminex Business Development Team.

# Luminex Partner Toolkit

More than 17,500 xMAP® instruments sold globally.

Manufacturing consultation from the undisputed multiplex assay market leader with more than 25 years of experience and a history of continuous innovation.

Take the guesswork out of getting started with the xMAP Cookbook – a collection of proven protocols and reagent recommendations.

Opportunities include access to our digital presence, display space in our trade show booth and collateral, and participation in webinars and xMAP-related scientific symposia.



Support from Luminex's Business Managers worldwide, who are in the field talking to your representatives and potential customers every day.

A full menu of microspheres, an antibody coupling kit, and ancillary instrument control reagents.

We provide assistance in your lab. Field Application Scientists are available to aid in the development and optimization of your assays.

In-person and online classes to enhance your knowledge of Luminex technology and systems.



# Luminex Worldwide Locations



Since launching in 1995, Luminex has expanded to include operations in North America, Europe, and Asia. Luminex is now a DiaSorin Company. DiaSorin has industrial sites indicated in blue below.



Contact your local Luminex representative for pricing information.



### **Global Headquarters**

12212 Technology Boulevard  
Austin, TX 78727  
USA

**US Toll-Free:** +1 888 219 8020

**T** +1 512 219 8020

**F** +1 512 219 5195

info@luminexcorp.com

### **Shipping Address**

12212 Technology Boulevard  
Suite 130  
Austin, TX 78727  
USA

### **Sales Support**

**Int'l Toll-Free** +1 866 401 5450

**T** +1 512 336 3550

**F** +1 512 219 0544

orders@luminexcorp.com

### **Technical Support**

**US Toll-Free:** +1 877 785 BEAD (2323)

**Int'l Toll-Free:** +1 800 29 39 49 59

**T** +1 512 381 4397

**F** +1 512 219 5114

support@luminexcorp.com

### **Chicago**

4088 Commercial Ave  
Northbrook, IL 60062  
USA

**T** +1 847 400 9000

### **Madison, Wisconsin**

1224 Deming Way  
Madison, WI 53717  
USA

**US Toll-Free** +1 877 885 6617

**T** +1 608 662 9000

**F** +1 608 662 9185

### **Canada**

439 University Avenue, Suite 900  
Toronto, Ontario M5G 1Y8  
Canada

**T** +1 416 593 4323

**F** +1 416 593 1066

### **Seattle**

645 Elliott Ave W  
Seattle, WA 98119  
**T** +1 206 374 7000

**US Toll-Free** +1 800 730 7147

### **Europe**

Het Zuiderkruis 1  
5215 MV 's-Hertogenbosch  
The Netherlands

**T** +31 (0)73 800 1900

**F** +31 (0)73 800 1999

europe@luminexcorp.com

### **Japan**

Kamiyacho Azabudai, Building 8F  
1-7-2 Azabudai  
Minato-ku, Tokyo 106-0041  
Japan

**T** +81 3 5545 7440

**F** +81 3 5545 0451

infojp@luminexcorp.com

### **Hong Kong**

Unit 1206, Lemmi Centre, 50 Hoi Yuen  
Road Kowloon, Hong Kong

**T** +852 2234 5680

**F** +852 2234 5766

infocn@luminexcorp.com

### **Shanghai**

14/F, C&D. Building 7, 2388 Chenhang  
Road  
Pujiang Hi-Tech Park, Minhang District  
Shanghai 201114  
China

**T** +86 21 8036 9888

**F** +86 21-8036 9899

**Hotline** 400 996 2655

infocn@luminexcorp.com



**Luminex**<sup>®</sup>  
A DiaSorin Company

[luminexcorp.com/xMAP-Technology/](https://luminexcorp.com/xMAP-Technology/)

©2014-2022 Luminex Corporation. A DiaSorin Company. All rights reserved. Luminex, xMAP, xPONENT, MAGPIX, FLEXMAP 3D, xMAP INTELLIFLEX, xTAG, MagPlex, MicroPlex, and LumAvidin are trademarks of Luminex Corporation, registered in the US and other countries. MagPlex-TAG, Luminex 200, and SeroMAP are trademarks of Luminex Corporation.